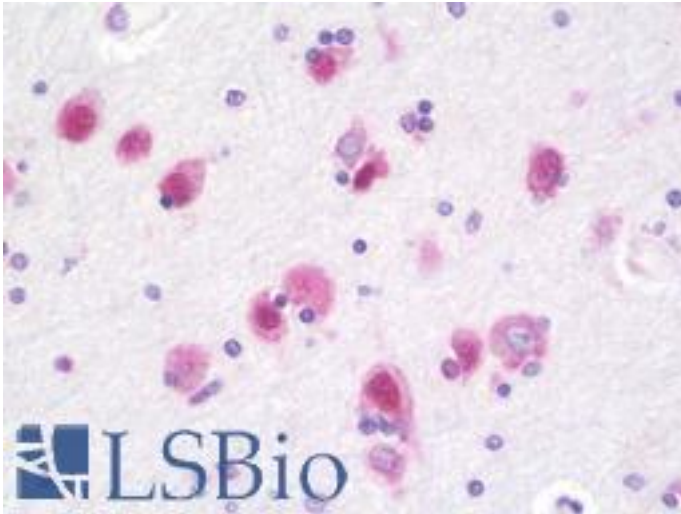


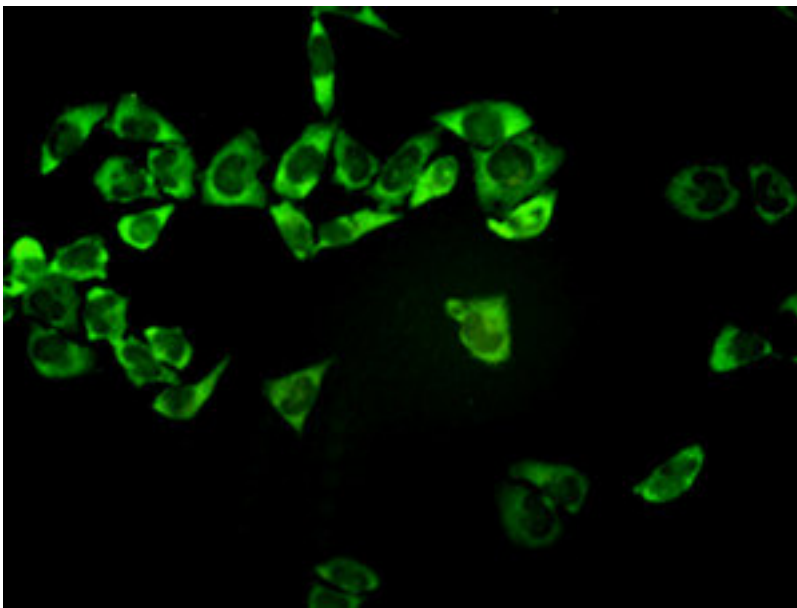
PSMA7 / HSPC Mouse anti-Human Monoclonal (1A10-3G12) Antibody - LS-B9946 - LSBio	
CatalogID:	LS-B9946
Validation:	This antibody replaces catalog number LS-C133411. It has been validated for use in the following assays: IHC-P.
Target:	proteasome (prosome, macropain) subunit, alpha type, 7 (PSMA7)
Synonyms:	PSMA7 Antibody, Proteasome subunit RC6-1 Antibody, XAPC7 Antibody, Proteasome subunit alpha 4 Antibody, Proteasome subunit XAPC7 Antibody, RC6-1 Antibody, HSPC Antibody
Family / Subfamily:	Protease Non Catalytic / Threonine T1
Host	PSMA7 antibody was produced in Mouse
Clonality:	Monoclonal
Isotype:	IgG2b,k
Clone Name:	1A10-3G12
Immunogen Species:	PSMA7 / HSPC antibody was raised against Human
Immunogen:	PSMA7 / HSPC antibody was raised against pSMA7 (AAH04427, 1 a.a. ~ 249 a.a) full length recombinant protein with GST tag. MW of the GST tag alone is 26 KDa.
Specificity:	Human PSMA7
Reactivity:	Human
Purification:	Protein A purified
Presentation:	PBS, pH 7.4.
Recommended Storage:	Store at -20°C or lower. Aliquot to avoid repeated freezing and thawing.
Usage Summary:	Immunohistochemistry: Formalin-fixed paraffin-embedded sections, Formalin/PFA-fixed paraffin-embedded sections. Sandwich ELISA: Recombinant protein. Western Blot: Tissue lysate, Cell lysate, Transfected lysate, Recombinant protein.
Uses:	IHC - Paraffin (20 µg/ml), Immunofluorescence (1 - 10 µg/ml), Western blot, Immunoprecipitation, ELISA (Optimal dilution to be determined by the researcher)
Size:	100 µg
Concentration:	0.5 mg/ml

Immunohistochemistry Image:



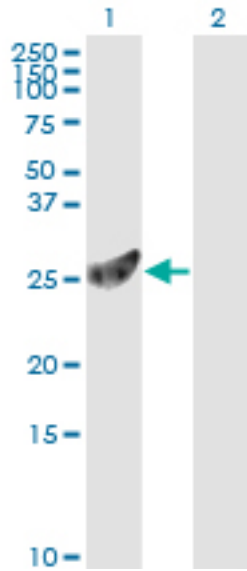
Human Brain, Cortex: Formalin-Fixed, Paraffin-Embedded (FFPE)

Immunofluorescence Image:



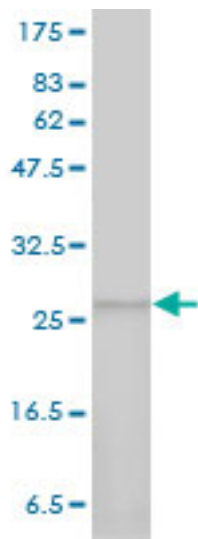
Immunofluorescence of monoclonal antibody to PSMA7 on HeLa cell. [antibody concentration 1 ~10 ug/ml].

Western Blot Image:



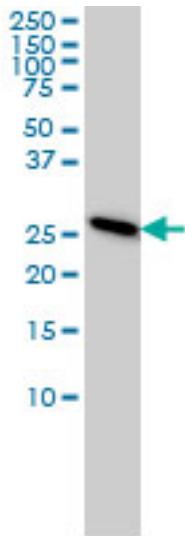
Western blot of PSMA7 expression in transfected 293T cell line by PSMA7 monoclonal antibody (M01), clone 1A10-3G12.

Western Blot Image:



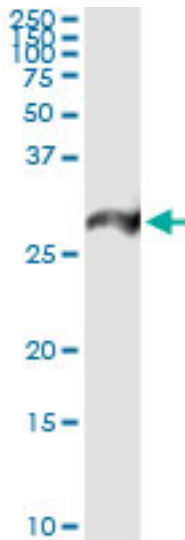
PSMA7 monoclonal antibody (M01), clone 1A10-3G12. Western blot of PSMA7 expression in human omentum, serous carcinoma.

Western Blot Image:



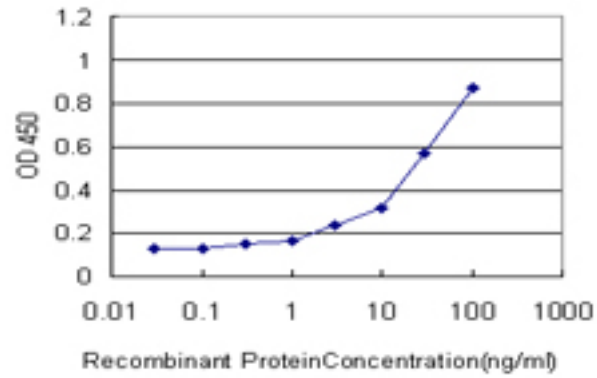
PSMA7 monoclonal antibody (M01), clone 1A10-3G12 Western blot of PSMA7 expression in HeLa.

Immunoprecipitation Image:



Immunoprecipitation of PSMA7 transfected lysate using anti-PSMA7 monoclonal antibody and Protein A Magnetic Bead.

ELISA Image:



Detection limit for recombinant GST tagged PSMA7 is approximately 1 ng/ml as a capture antibody.

Requested From:

Japan

Laboratory Reagent For In Vitro Research Use Only

Not for resale without prior written consent from LifeSpan BioSciences, Inc.

Created on 9/24/2014

© 2014 LifeSpan BioSciences