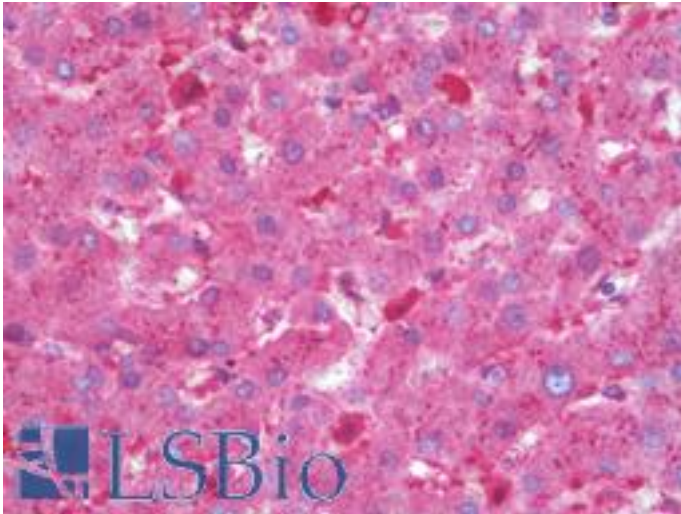


ADPRH / ARH1 Mouse anti-Human Monoclonal (1F11) Antibody - LS-B9939 - LSBio

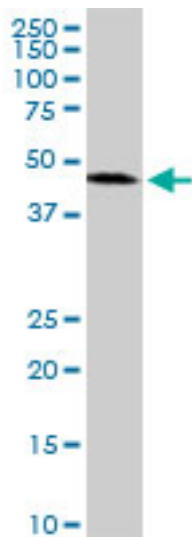
CatalogID:	LS-B9939
Validation:	This antibody replaces catalog number LS-C133856. It has been validated for use in the following assays: IHC-P.
Target:	ADP-ribosylarginine hydrolase (ADPRH)
Synonyms:	ADPRH Antibody, ADP-ribosylarginine hydrolase Antibody, ARH1 Antibody
Host	ADPRH antibody was produced in Mouse
Clonality:	Monoclonal
Isotype:	IgG2a,k
Clone Name:	1F11
Immunogen Species:	ADPRH / ARH1 antibody was raised against Human
Immunogen:	ADPRH / ARH1 antibody was raised against aADPRH (NP_001116, 23 a.a. ~ 122 a.a) partial recombinant protein with GST tag. MW of the GST tag alone is 26 KDa.
Specificity:	Human ADPRH
Reactivity:	Human
Purification:	Protein A purified
Presentation:	PBS, pH 7.4.
Recommended Storage:	Store at -20°C or lower. Aliquot to avoid repeated freezing and thawing.
Usage Summary:	Immunohistochemistry: Formalin-fixed paraffin-embedded sections. Sandwich ELISA: Recombinant protein. Western Blot: Cell lysate.
Uses:	IHC - Paraffin (10 µg/ml), Western blot, ELISA (Optimal dilution to be determined by the researcher)
Size:	100 µg
Concentration:	0.5 mg/ml

Immunohistochemistry Image:



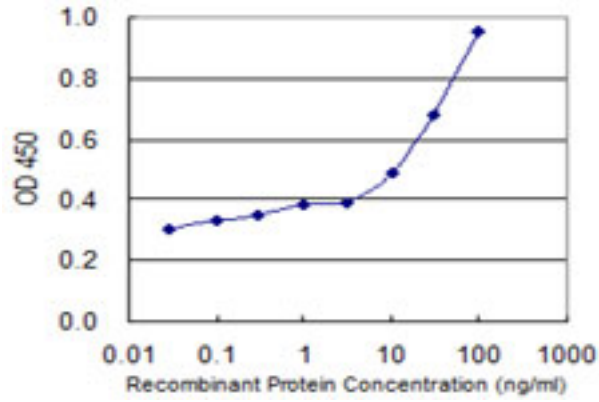
Human Liver: Formalin-Fixed, Paraffin-Embedded (FFPE)

Western Blot Image:



ADPRH monoclonal antibody (M04), clone 1F11. Western blot of ADPRH expression in K-562.

ELISA Image:



Detection limit for recombinant GST tagged ADPRH is 3 ng/ml as a capture antibody.

Requested From:

Japan

Laboratory Reagent For In Vitro Research Use Only

Not for resale without prior written consent from LifeSpan BioSciences, Inc.

Created on 9/24/2014

© 2014 LifeSpan BioSciences