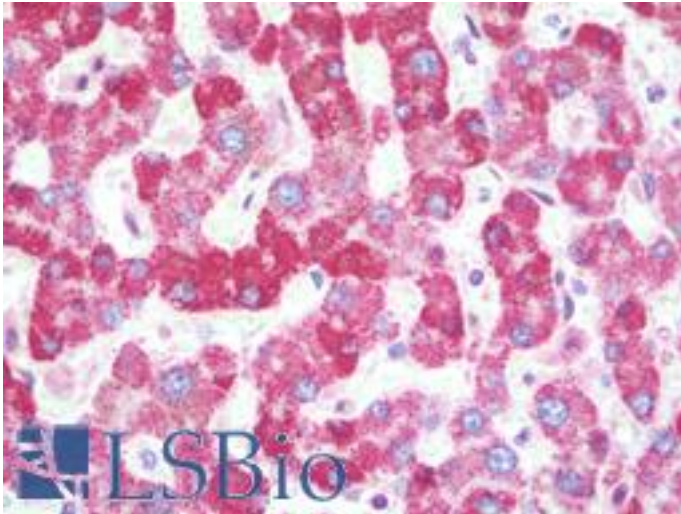


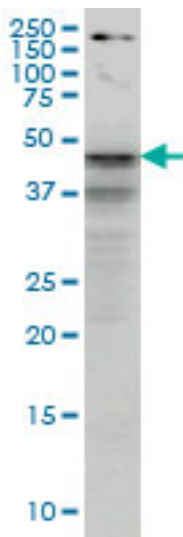
SHBG Mouse anti-Human Monoclonal (5E6) Antibody - LS-B9938 - LSBio	
CatalogID:	LS-B9938
Validation:	This antibody replaces catalog number LS-C198189. It has been validated for use in the following assays: IHC-P.
Target:	sex hormone-binding globulin (SHBG)
Synonyms:	SHBG Antibody, ABP Antibody, SBP Antibody, Sex hormone-binding globulin Antibody, Sex steroid-binding protein Antibody, TEBG Antibody
Host	SHBG antibody was produced in Mouse
Clonality:	Monoclonal
Isotype:	IgG2b,k
Clone Name:	5E6
Immunogen Species:	SHBG antibody was raised against Human
Antigen Type:	GST fusion protein
Immunogen:	SHBG antibody was raised against sHBG (NP_001031, aa41-140 partial recombinant protein with GST tag. MW of the GST tag alone is 26 KDa.
Specificity:	Human SHBG
Reactivity:	Human
Purification:	Protein A purified
Presentation:	PBS, pH 7.4.
Recommended Storage:	Store at -20°C or lower. Aliquot to avoid repeated freezing and thawing.
Usage Summary:	Sandwich ELISA: Recombinant protein. Western Blot: Cell lysate, Recombinant protein.
Uses:	IHC - Paraffin (10 µg/ml), Western blot, ELISA (Optimal dilution to be determined by the researcher)
Size:	100 µg
Concentration:	0.5 mg/ml

Immunohistochemistry Image:



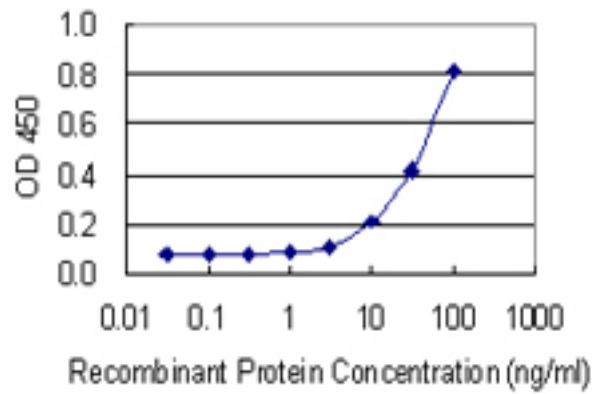
Human Liver: Formalin-Fixed, Paraffin-Embedded (FFPE)

Western Blot Image:



SHBG monoclonal antibody (M01), clone 5E6 Western Blot analysis of SHBG expression in HepG2.

ELISA Image:



Detection limit for recombinant GST tagged SHBG is 1 ng/ml as a capture antibody.

Requested From:

Japan

Laboratory Reagent For In Vitro Research Use Only

Not for resale without prior written consent from LifeSpan BioSciences, Inc.

Created on 9/24/2014

© 2014 LifeSpan BioSciences