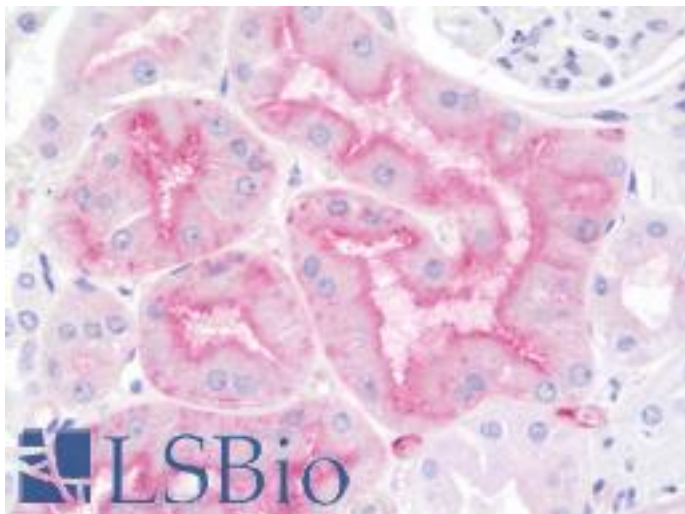


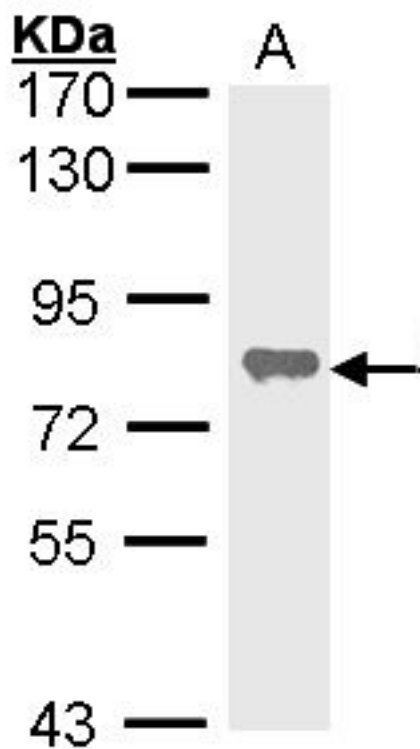
ALPL / Alkaline Phosphatase Rabbit anti-Human Polyclonal (aa1-359) Antibody - LS-B9937 - LSBio	
<b>CatalogID:</b>	LS-B9937
<b>Validation:</b>	This antibody replaces catalog number LS-C185383. It has been validated for use in the following assays: IHC-P.
<b>Target:</b>	alkaline phosphatase, liver/bone/kidney (ALPL)
<b>Synonyms:</b>	ALPL Antibody, Alkaline phosphomonoesterase Antibody, AP-TNAP Antibody, Alkaline phosphatase liver Antibody, APTNAP Antibody, Glycerophosphatase Antibody, Tissue-nonspecific ALP Antibody, TNAP Antibody, HOPS Antibody, Liver alkaline phosphatase Antibody, TNSALP Antibody
<b>Host</b>	ALPL antibody was produced in Rabbit
<b>Clonality:</b>	Polyclonal
<b>Isotype:</b>	IgG
<b>Immunogen Species:</b>	ALPL / Alkaline Phosphatase antibody was raised against Human
<b>Antigen Type:</b>	Recombinant protein
<b>Immunogen:</b>	ALPL / Alkaline Phosphatase antibody was raised against recombinant protein fragment contain a sequence corresponding to a region within amino acids 1 and 359 (P05186) of Alkaline Phosphatase (Tissue Non-Specific). Percent identity by BLAST analysis: Human (100%); Mouse, Rat (91%); Cat (90%); Dog, Bovine (89%).
<b>Specificity:</b>	Human ALPL / Alkaline Phosphatase
<b>Epitope:</b>	aa1-359
<b>Reactivity:</b>	Human
<b>Purification:</b>	Immunoaffinity purified
<b>Presentation:</b>	0.1 M Tris-glycine, pH 7.0, 10% glycerol, 0.01% Thimerosal
<b>Recommended Storage:</b>	Keep as concentrated solution. Aliquot and store at -20°C or below. Avoid multiple freeze-thaw cycles.
<b>Usage Summary:</b>	IHC-paraffin: Suggested antigen retrieval using heat mediated 10 mM Citrate buffer (pH 6.0) or Tris-EDTA buffer (pH 8.0).
<b>Uses:</b>	IHC - Paraffin (1:50), Western blot (1:500 - 1:3000) (Optimal dilution to be determined by the researcher)
<b>Size:</b>	100 µl
<b>Concentration:</b>	0.48 mg/ml

**Immunohistochemistry Image:**



Human Kidney: Formalin-Fixed, Paraffin-Embedded (FFPE)

**Western Blot Image:**



Sample (30 ug of whole cell lysate). A: HeLa. 7.5% SDS PAGE. ALPL / Alkaline Phosphatase antibody diluted at 1:1000.

Requested From:

Japan

Laboratory Reagent For In Vitro Research Use Only

Not for resale without prior written consent from LifeSpan BioSciences, Inc.

Created on 9/24/2014

© 2014 LifeSpan BioSciences