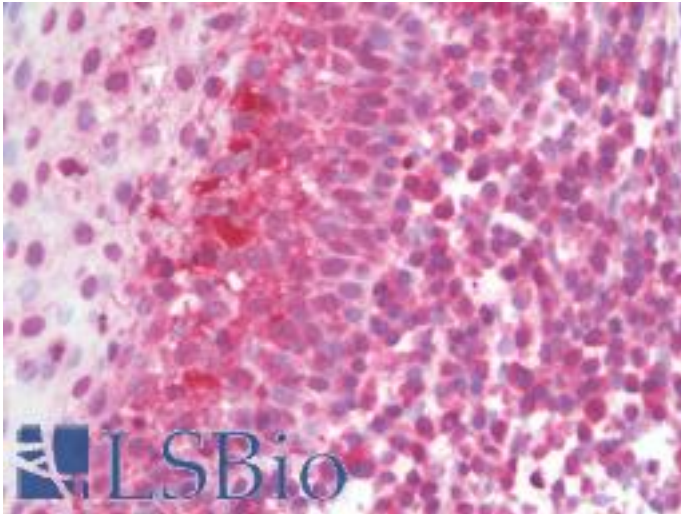


**TLR10 Rabbit anti-Human Polyclonal Antibody - LS-B9935 - LSBio**

<b>CatalogID:</b>	LS-B9935
<b>Validation:</b>	This antibody replaces catalog number LS-C10794. It has been validated for use in the following assays: IHC-P.
<b>Target:</b>	toll-like receptor 10 (TLR10)
<b>Synonyms:</b>	TLR10 Antibody, CD290 Antibody, CD290 antigen Antibody, Toll-like receptor 10 Antibody
<b>Family / Subfamily:</b>	Toll-like Receptor / not assigned-Toll-like Receptor
<b>Host</b>	TLR10 antibody was produced in Rabbit
<b>Clonality:</b>	Polyclonal
<b>Isotype:</b>	IgG
<b>Immunogen Species:</b>	TLR10 antibody was raised against Human
<b>Antigen Type:</b>	Synthetic peptide
<b>Immunogen:</b>	TLR10 antibody was raised against synthetic peptide corresponding to a fourteen amino acid sequence within human TLR10.
<b>Specificity:</b>	Specific for human Toll-like receptor 10 (TLR10).
<b>Reactivity:</b>	Human
<b>Purification:</b>	Ion exchange chromatography
<b>Presentation:</b>	PBS, pH 7.4, 0.02% sodium azide.
<b>Recommended Storage:</b>	Long term: -20°C; Short term: +4°C. Avoid repeat freeze-thaw cycles.
<b>Usage Summary:</b>	Suitable for use in Western Blot. Western Blot: 0.5-1.0 ug/ml.
<b>Uses:</b>	IHC - Paraffin (5 µg/ml), Western blot (0.5 - 1 µg/ml) (Optimal dilution to be determined by the researcher)
<b>Size:</b>	50 µg
<b>Concentration:</b>	1 mg/ml

**Immunohistochemistry Image:**



Human Tonsil: Formalin-Fixed, Paraffin-Embedded (FFPE)

**Requested From:**

Japan

Laboratory Reagent For In Vitro Research Use Only

Not for resale without prior written consent from LifeSpan BioSciences, Inc.

Created on 9/24/2014

© 2014 LifeSpan BioSciences