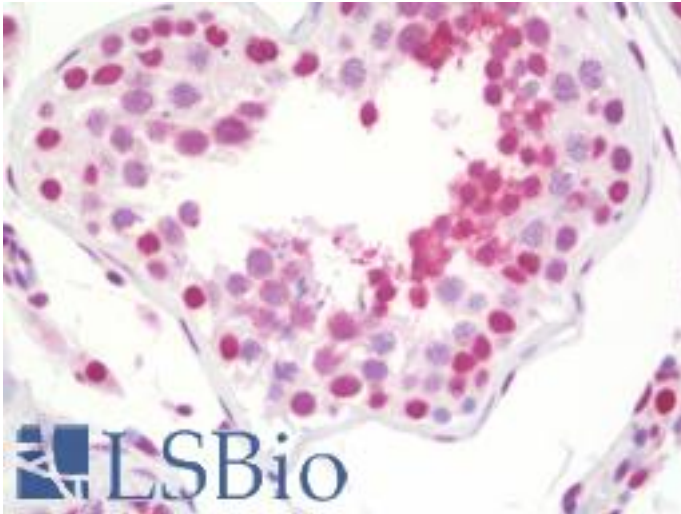


CENPU / MLF1IP Rabbit anti-Human Polyclonal Antibody - LS-B9930 - LSBio	
CatalogID:	LS-B9930
Validation:	This antibody replaces catalog number LS-C179901. It has been validated for use in the following assays: IHC-P.
Target:	Centromere protein U (CENPU)
Synonyms:	CENPU Antibody, CENP-U Antibody, CENP50 Antibody, CENPU50 Antibody, Centromere protein U Antibody, ICEN24 Antibody, KLIP1 Antibody, Polo-box-interacting protein 1 Antibody, MLF1-interacting protein Antibody, CENP-50 Antibody, Centromere protein of 50 kDa Antibody, MLF1 interacting protein Antibody, MLF1IP Antibody, PBIP1 Antibody
Host	CENPU antibody was produced in Rabbit
Clonality:	Polyclonal
Immunogen Species:	CENPU / MLF1IP antibody was raised against Human
Antigen Type:	Recombinant protein
Immunogen:	CENPU / MLF1IP antibody was raised against recombinant Human full length CENP-50.
Specificity:	Human MLF1IP / CENP-U
Reactivity:	Human
Purification:	Affinity purified
Presentation:	PBS, pH 7.2, 50% glycerol
Recommended Storage:	Store at -20°C.
Uses:	IHC - Paraffin (1:100), ICC (1:1000) (Optimal dilution to be determined by the researcher)
Size:	50 µl
Concentration:	1 mg/ml

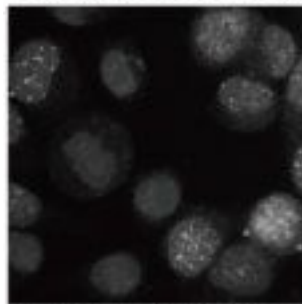
Immunohistochemistry Image:



Human Testis: Formalin-Fixed, Paraffin-Embedded (FFPE)

Immunocytochemistry Image:

■ Immunocytochemistry



Anti-CENP-50

Requested From:

Japan

Laboratory Reagent For In Vitro Research Use Only

Not for resale without prior written consent from LifeSpan BioSciences, Inc.

Created on 9/24/2014

© 2014 LifeSpan BioSciences