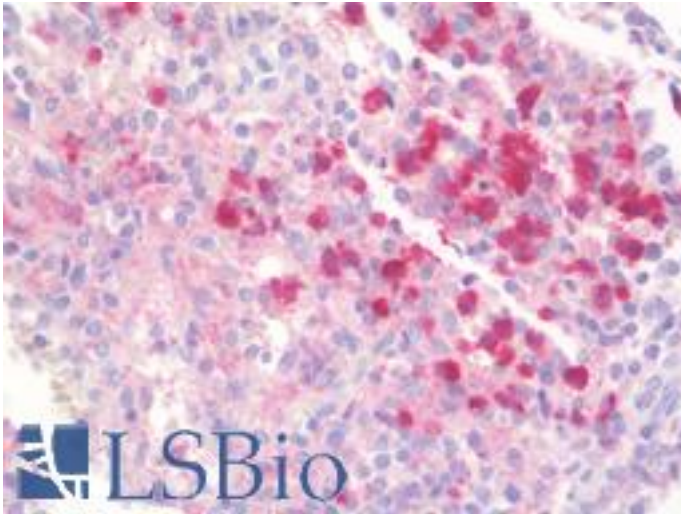


| ACTB / Beta Actin Rabbit anti-Human Polyclonal Antibody - LS-B9929 - LSBio | |
|--|---|
| CatalogID: | LS-B9929 |
| Validation: | This antibody replaces catalog number LS-C88809. It has been validated for use in the following assays: IHC-P. |
| Target: | actin, beta (ACTB) |
| Synonyms: | ACTB Antibody, Actin, cytoplasmic 1 Antibody, Beta-actin Antibody, Beta actin Antibody, BRWS1 Antibody, Actin, beta Antibody, Beta cytoskeletal actin Antibody, PS1TP5-binding protein 1 Antibody, PS1TP5BP1 Antibody |
| Host | ACTB antibody was produced in Rabbit |
| Clonality: | Polyclonal |
| Immunogen Species: | ACTB / Beta Actin antibody was raised against Human |
| Antigen Type: | Synthetic peptide |
| Immunogen: | ACTB / Beta Actin antibody was raised against synthetic peptide corresponding to N-terminus of human beta actin. |
| Specificity: | N-terminus |
| Reactivity: | Human, Mouse, Rat, Bovine, Cat, Dog, Guinea pig, Pig, Rabbit, Sheep, Chicken, Drosophila, Leech |
| Purification: | Affinity purified |
| Presentation: | 10mM PBS, pH 7.6, with 0.2% BSA and 15mM sodium azide |
| Recommended Storage: | Stable for 24 months when stored at 2-8°C. |
| Uses: | IHC - Paraffin (1:50), Western blot (2 - 4 µg/ml) (Optimal dilution to be determined by the researcher) |
| Size: | 250 µl |
| Concentration: | 0.2 mg/µl |

Immunohistochemistry Image:



Human Spleen: Formalin-Fixed, Paraffin-Embedded (FFPE)

Requested From:

Japan

Laboratory Reagent For In Vitro Research Use Only

Not for resale without prior written consent from LifeSpan BioSciences, Inc.

Created on 9/24/2014

© 2014 LifeSpan BioSciences