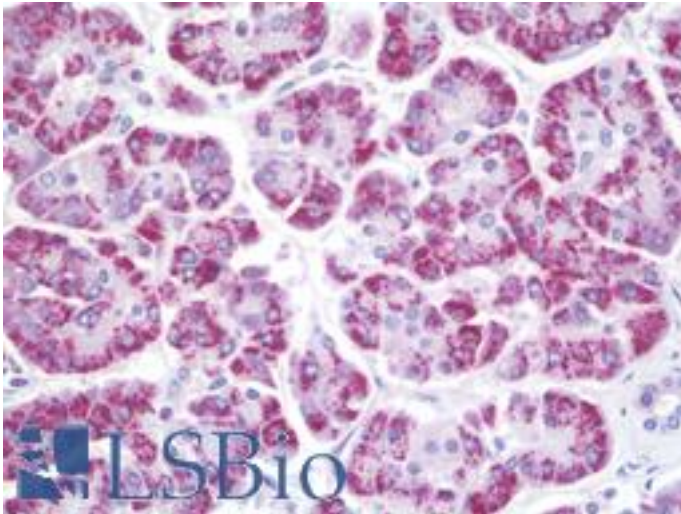


**GGT1 / GGT Rabbit anti-Human Polyclonal (aa1-226) Antibody - LS-B9924 - LSBio**

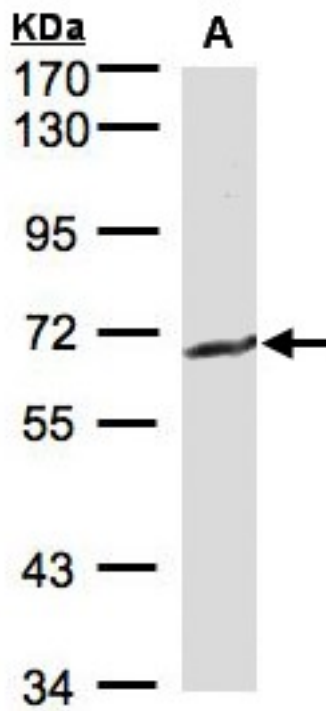
<b>CatalogID:</b>	LS-B9924
<b>Validation:</b>	This antibody replaces catalog number LS-C185393. It has been validated for use in the following assays: IHC-P.
<b>Target:</b>	gamma-glutamyltransferase 1 (GGT1)
<b>Synonyms:</b>	GGT1 Antibody, CD224 antigen Antibody, CD224 Antibody, Ec 2.3.2.2 Antibody, Glutamyl transpeptidase Antibody, GTG Antibody, Gamma-glutamyltransferase Antibody, Glutathione hydrolase 1 Antibody, GLUTATHIONURIA Antibody, Gamma-glutamyl transpeptidase Antibody, Gamma-glutamyltransferase 1 Antibody, Gamma-glutamyltranspeptidase 1 Antibody, GGT Antibody, Leukotriene-C4 hydrolase Antibody, D22S672 Antibody, D22S732 Antibody, Gamma-glutamyltransferase 2 Antibody, GGT 1 Antibody
<b>Family / Subfamily:</b>	Protease / Threonine T3
<b>Host</b>	GGT1 antibody was produced in Rabbit
<b>Clonality:</b>	Polyclonal
<b>Immunogen Species:</b>	GGT1 / GGT antibody was raised against Human
<b>Antigen Type:</b>	Recombinant protein
<b>Immunogen:</b>	GGT1 / GGT antibody was raised against recombinant fragment corresponding to a region within amino acids 1 and 226 of GGT1 (SwissProt P19440).
<b>Specificity:</b>	Human GGT1 / GGT
<b>Epitope:</b>	aa1-226
<b>Reactivity:</b>	Human, Mouse
<b>Purification:</b>	Immunoaffinity purified
<b>Presentation:</b>	0.1 M Tris-glycine, pH 7.0, 10% glycerol, 0.01% Thimerosal
<b>Recommended Storage:</b>	Keep as concentrated solution. Aliquot and store at -20°C or below. Avoid multiple freeze-thaw cycles.
<b>Usage Summary:</b>	IHC-paraffin: Suggested antigen retrieval using heat mediated 10 mM Citrate buffer (pH 6.0) or Tris-EDTA buffer (pH 8.0).
<b>Uses:</b>	IHC - Paraffin (10 µg/ml), Western blot (1:500 - 1:3000) (Optimal dilution to be determined by the researcher)
<b>Size:</b>	50 µl
<b>Concentration:</b>	1 mg/ml

**Immunohistochemistry Image:**



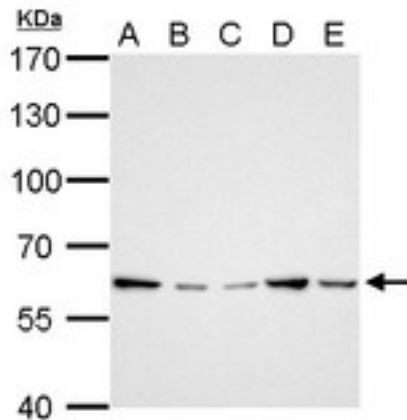
Human Pancreas: Formalin-Fixed, Paraffin-Embedded (FFPE)

**Western Blot Image:**



Sample (30 ug of whole cell lysate). A: MOLT4. 7.5% SDS PAGE. GGT1 / GGT antibody diluted at 1:500

**Western Blot Image:**



GGT1 antibody detects GGT1 protein by Western blot analysis. A. 30 ug Neuro2A whole cell lysate/extract. B. 30 ug GL261 whole cell lysate/extract. C. 30 ug C8D30 whole cell lysate/extract. D. 30 ug NIH-3T3 whole cell lysate/extract. E. 30 ug Raw264.7 whole cell lysate/extract. F. 30 ug C2C12 whole cell lysate/extract. 7.5 % SDS-PAGE. GGT1 antibody dilution:1:1000.

**Requested From:**

Japan

Laboratory Reagent For In Vitro Research Use Only

Not for resale without prior written consent from LifeSpan BioSciences, Inc.

Created on 9/24/2014

© 2014 LifeSpan BioSciences