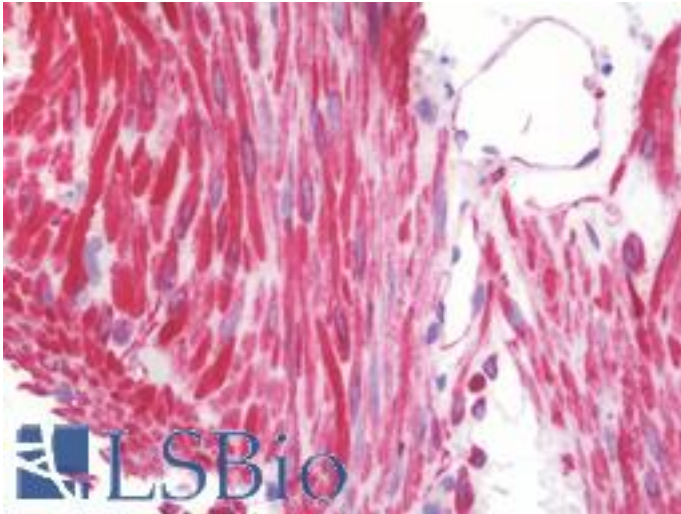


**DES / Desmin Rabbit anti-Human Polyclonal (Ile448) Antibody - LS-B9920 - LSBio**

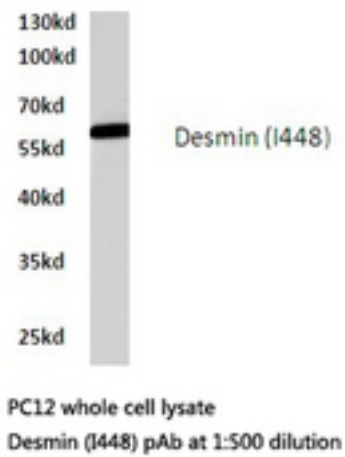
<b>CatalogID:</b>	LS-B9920
<b>Validation:</b>	This antibody replaces catalog number LS-C176575. It has been validated for use in the following assays: IHC-P.
<b>Target:</b>	desmin
<b>Synonyms:</b>	DES Antibody, ARVC7 Antibody, ARVD7 Antibody, CMD11 Antibody, CSM1 Antibody, CSM2 Antibody, MFM1 Antibody, SCPNK Antibody, Desmin Antibody, Intermediate filament protein Antibody
<b>Host</b>	DES antibody was produced in Rabbit
<b>Clonality:</b>	Polyclonal
<b>Immunogen Species:</b>	DES / Desmin antibody was raised against Human
<b>Antigen Type:</b>	Synthetic peptide
<b>Immunogen:</b>	DES / Desmin antibody was raised against synthetic peptide around Ile448 of human Desmin
<b>Specificity:</b>	Human Desmin
<b>Epitope:</b>	Ile448
<b>Reactivity:</b>	Human, Mouse, Rat
<b>Purification:</b>	Immunoaffinity purified
<b>Presentation:</b>	PBS, pH 7.2, 15 mM sodium azide
<b>Recommended Storage:</b>	Store at 4°C short term. Aliquot and store at -20°C long term. Avoid freeze-thaw cycles.
<b>Uses:</b>	IHC - Paraffin (5 µg/ml), Immunofluorescence (1:50 - 1:200), Western blot (1:500 - 1:1000) (Optimal dilution to be determined by the researcher)
<b>Size:</b>	50 µl
<b>Concentration:</b>	1 mg/ml

**Immunohistochemistry Image:**



Human Small Intestine: Formalin-Fixed, Paraffin-Embedded (FFPE)

**Western Blot Image:**



Western blot of Desmin (I448) pAb in extracts from PC12 cells.

**Requested From:**

Japan

Laboratory Reagent For In Vitro Research Use Only

Not for resale without prior written consent from LifeSpan BioSciences, Inc.

Created on 9/24/2014

© 2014 LifeSpan BioSciences