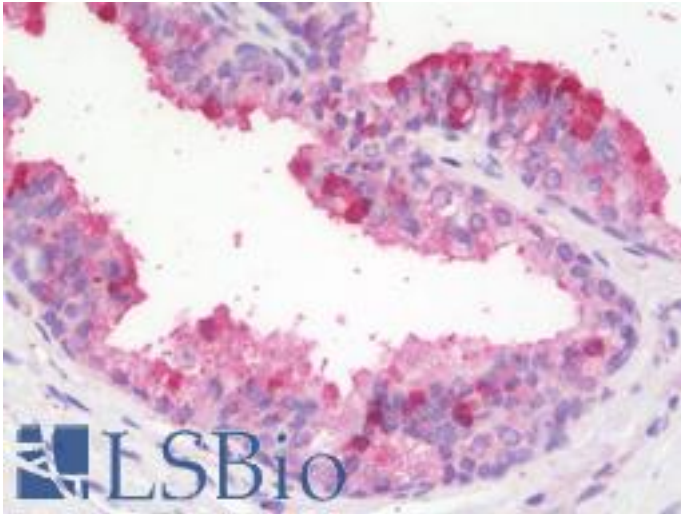


ZBTB24 / BIF1 Goat anti-Human Polyclonal (aa232-245) Antibody - LS-B9912 - LSBio

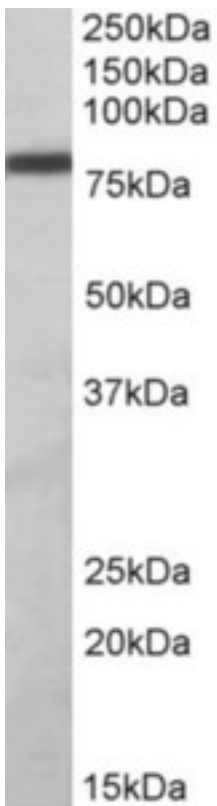
CatalogID:	LS-B9912
Validation:	This antibody replaces catalog number LS-C186634. It has been validated for use in the following assays: IHC-P.
Target:	Zinc Finger And BTB Domain Containing 24 (ZBTB24)
Synonyms:	ZBTB24 Antibody, PATZ2 Antibody, KIAA0441 Antibody, BIF1 Antibody, Zinc finger protein 450 Antibody, ZNF450 Antibody, ICF2 Antibody
Host	ZBTB24 antibody was produced in Goat
Clonality:	Polyclonal
Immunogen Species:	ZBTB24 / BIF1 antibody was raised against Human
Antigen Type:	Synthetic peptide
Immunogen:	ZBTB24 / BIF1 antibody was raised against synthetic peptide C-PVEKDENYDPKTED from an internal region of human ZBTB24 / BIF1 (NP_055612.2; NP_001157785.1). Percent identity by BLAST analysis: Human (100%); Chimpanzee, Gorilla, Orangutan, Gibbon, Monkey, Marmoset (93%); Bovine (86%).
Specificity:	Human ZBTB24 / BIF1. This antibody is expected to recognize both reported isoforms (NP_055612.2; NP_001157785.1).
Epitope:	aa232-245
Reactivity:	Human
Purification:	Immunoaffinity purified
Presentation:	Tris-buffered saline, pH 7.3, 0.5% BSA, 0.02% sodium azide
Recommended Storage:	Store at -20°C. Minimize freezing and thawing.
Usage Summary:	Peptide ELISA: antibody detection limit dilution 1:8000. Western blot: Approx 80kD band observed in lysates of cell line Daudi (calculated MW of 78.3kD according to NP_055612.2). Recommended concentration: 1-3 ug/ml.
Uses:	IHC - Paraffin (5 µg/ml), Western blot (1 - 3 µg/ml), ELISA (1:8000) (Optimal dilution to be determined by the researcher)
Size:	50 µg
Concentration:	0.5 mg/ml

Immunohistochemistry Image:



Human Prostate: Formalin-Fixed, Paraffin-Embedded (FFPE)

Western Blot Image:



ZBTB24 antibody (1 ug/ml) staining of Daudi lysate (35 ug protein in RIPA buffer). Primary incubation was 1 hour. Detected by chemiluminescence.

Requested From:

Japan

Laboratory Reagent For In Vitro Research Use Only

Not for resale without prior written consent from LifeSpan BioSciences, Inc.

Created on 9/24/2014

© 2014 LifeSpan BioSciences