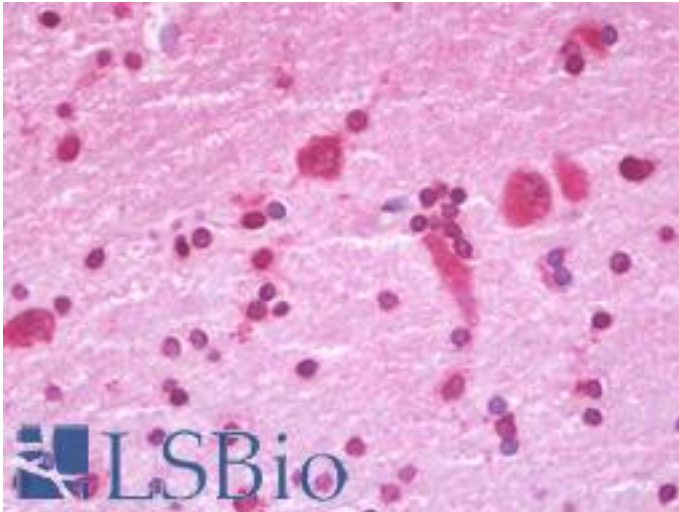


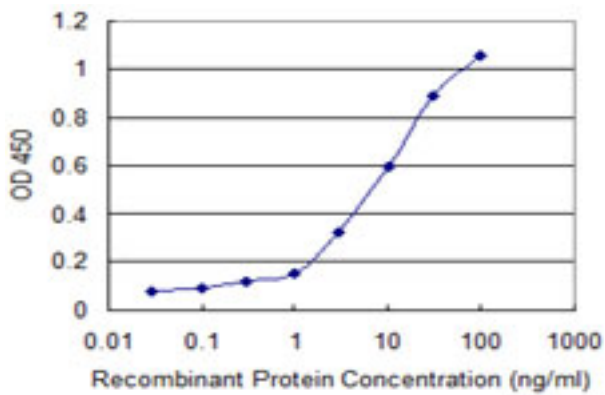
GRM1 / MGLUR1 Mouse anti-Human Monoclonal (1F7) Antibody - LS-B9907 - LSBio	
CatalogID:	LS-B9907
Validation:	This antibody replaces catalog number LS-C197358. It has been validated for use in the following assays: IHC-P.
Target:	glutamate receptor, metabotropic 1 (GRM1)
Synonyms:	GRM1 Antibody, GRM1A Antibody, GPRC1A Antibody, MGlu1 Antibody, MGLUR1 Antibody, SCAR13 Antibody, MGLUR1A Antibody
Family / Subfamily:	GPCR / Metabotropic glutamate
Host	GRM1 antibody was produced in Mouse
Clonality:	Monoclonal
Isotype:	IgG2b,k
Clone Name:	1F7
Immunogen Species:	GRM1 / MGLUR1 antibody was raised against Human
Antigen Type:	GST fusion protein
Immunogen:	GRM1 / MGLUR1 antibody was raised against gRM1 (NP_000829, aa387-486 partial recombinant protein with GST tag. MW of the GST tag alone is 26 KDa.
Specificity:	Human GRM1 / MGLUR1
Reactivity:	Human
Purification:	Protein A purified
Presentation:	PBS, pH 7.4.
Recommended Storage:	Store at -20°C or lower. Aliquot to avoid repeated freezing and thawing.
Usage Summary:	Immunohistochemistry: Recombinant protein. Sandwich ELISA: Recombinant protein. Western Blot: Recombinant protein.
Uses:	IHC - Paraffin (10 µg/ml), Western blot, ELISA (Optimal dilution to be determined by the researcher)
Size:	50 µg
Concentration:	0.5 mg/ml

Immunohistochemistry Image:



Human Brain, Cortex: Formalin-Fixed, Paraffin-Embedded (FFPE)

ELISA Image:



Detection limit for recombinant GST tagged GRM1 is 0.1 ng/ml as a capture antibody.

Requested From:

Japan

Laboratory Reagent For In Vitro Research Use Only

Not for resale without prior written consent from LifeSpan BioSciences, Inc.

Created on 9/24/2014

© 2014 LifeSpan BioSciences