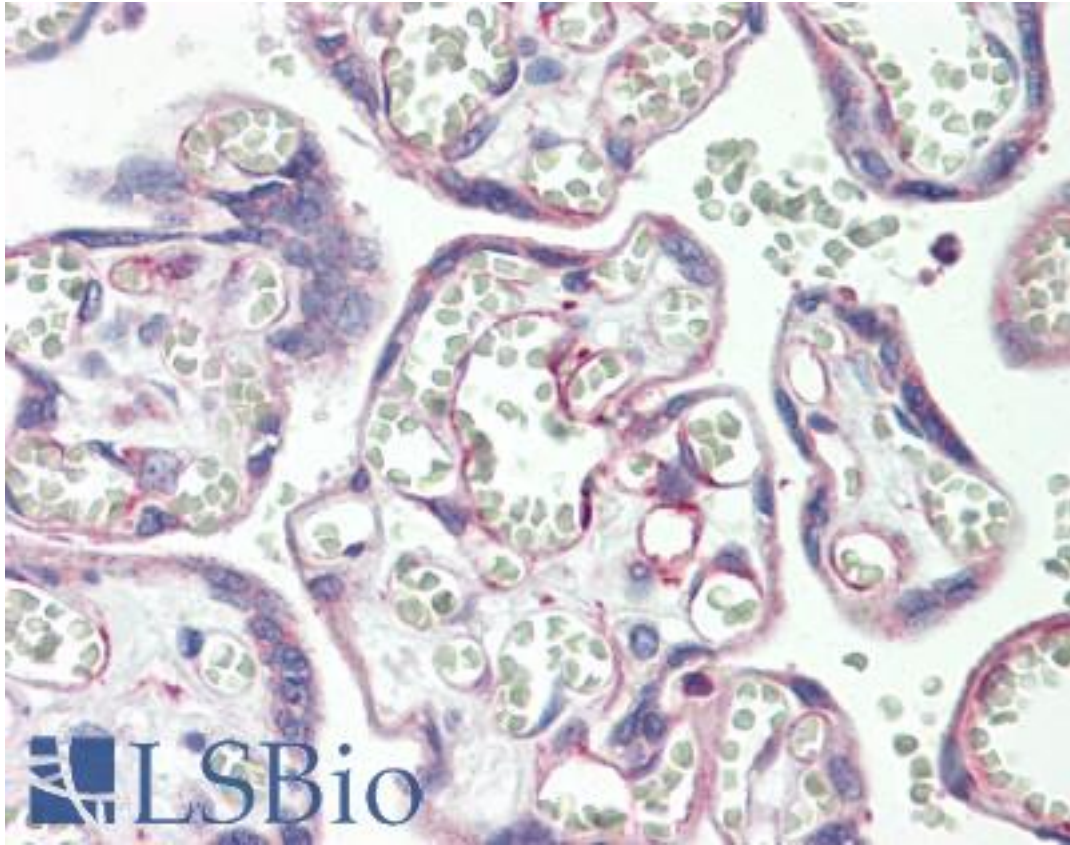


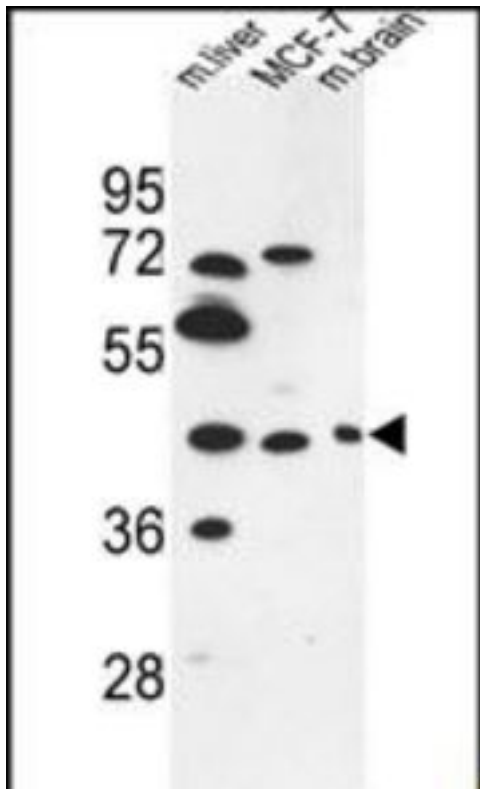
PSG3 Rabbit anti-Human Polyclonal (aa29-58) Antibody - LS-B9903 - LSBio	
CatalogID:	LS-B9903
Validation:	This antibody replaces catalog number LS-C162210. It has been validated for use in the following assays: IHC-P.
Target:	pregnancy specific beta-1-glycoprotein 3 (PSG3)
Synonyms:	PSG3 Antibody, Carcinoembryonic antigen SG5 Antibody, PSBG-3 Antibody, PS-beta-G-3 Antibody
Family / Subfamily:	CEA / not assigned-CEA
Host	PSG3 antibody was produced in Rabbit
Clonality:	Polyclonal
Immunogen Species:	PSG3 antibody was raised against Human
Antigen Type:	Synthetic peptide
Immunogen:	PSG3 antibody was raised against kLH-conjugated synthetic peptide from N-terminal region of human PSG3.
Specificity:	Human PSG3
Epitope:	aa29-58
Reactivity:	Human, Mouse
Purification:	Immunoaffinity purified
Presentation:	PBS, 0.09% sodium azide
Recommended Storage:	Maintain refrigerated at 2-8°C for up to 6 months. For long term storage store at -20°C.
Uses:	IHC - Paraffin (1:100), Western blot (1:1000) (Optimal dilution to be determined by the researcher)
Size:	200 µl

Immunohistochemistry Image:



Human Placenta: Formalin-Fixed, Paraffin-Embedded (FFPE)

Western Blot Image:



PSG3 Antibody (N-term) Western blot of MCF-7 cell line and mouse liver,brain tissue lysates (35 ug/lane). This demonstrates the PSG3 antibody detected the PSG3 protein (arrow).

Requested From:

Japan

Laboratory Reagent For In Vitro Research Use Only

Not for resale without prior written consent from LifeSpan BioSciences, Inc.

Created on 9/24/2014

© 2014 LifeSpan BioSciences