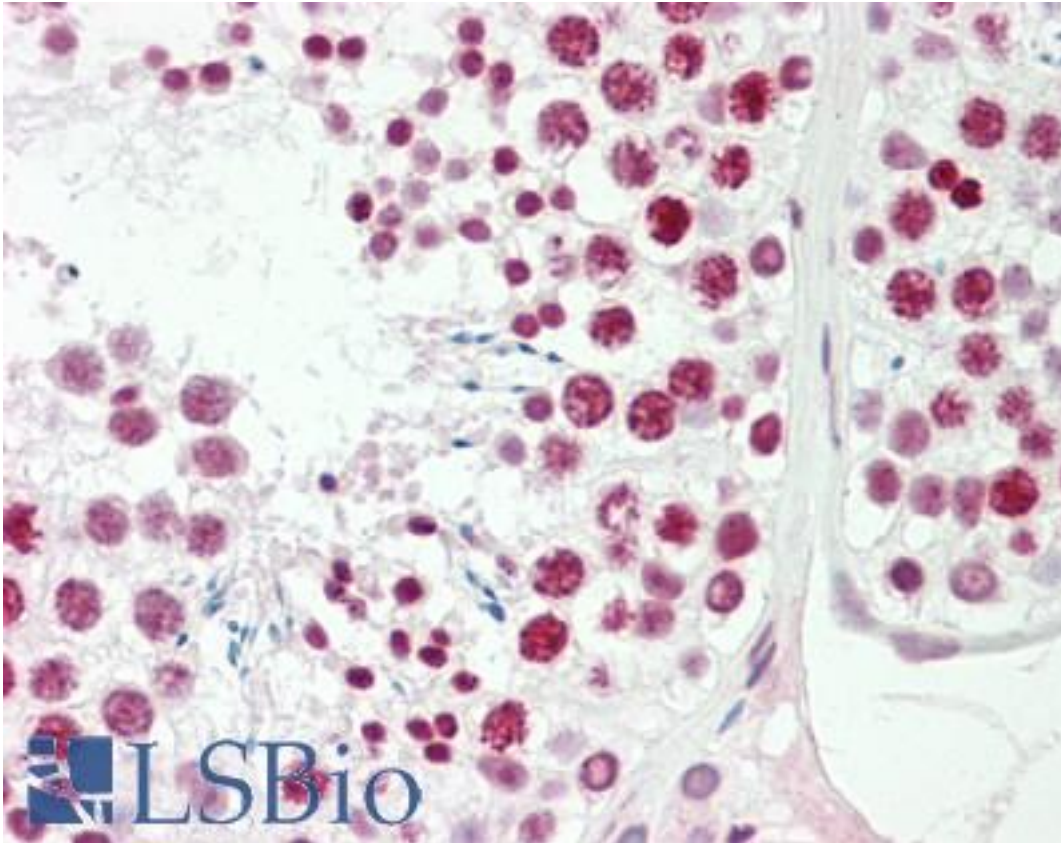


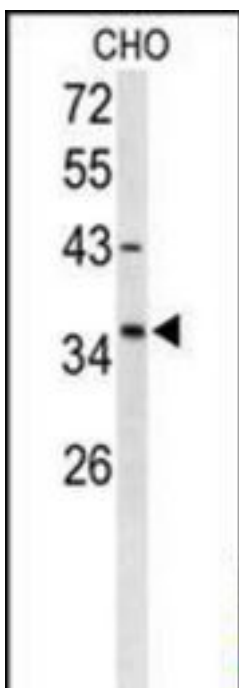
FOXL1 Rabbit anti-Human Polyclonal (aa99-129) Antibody - LS-B9901 - LSBio	
CatalogID:	LS-B9901
Validation:	This antibody replaces catalog number LS-C166232. It has been validated for use in the following assays: IHC-P.
Target:	forkhead box L1 (FOXL1)
Synonyms:	FOXL1 Antibody, Forkhead box L1 Antibody, Forkhead-like 11 Antibody, Forkhead -related protein 11 Antibody, FREAC-7 Antibody, Forkhead protein I1 Antibody, FREAC7 Antibody, FKHL11 Antibody, Forkhead box protein L1 Antibody, FKH6 Antibody
Family / Subfamily:	Transcription factor / not assigned-Transcription factor
Host	FOXL1 antibody was produced in Rabbit
Clonality:	Polyclonal
Immunogen Species:	FOXL1 antibody was raised against Human
Antigen Type:	Synthetic peptide
Immunogen:	FOXL1 antibody was raised against kLH-conjugated synthetic peptide from internal region of human FOXL1.
Specificity:	Human FOXL1
Epitope:	aa99-129
Reactivity:	Human, Mouse
Purification:	Immunoaffinity purified
Presentation:	PBS, 0.09% sodium azide
Recommended Storage:	Maintain refrigerated at 2-8°C for up to 6 months. For long term storage store at -20°C.
Uses:	IHC - Paraffin (1:100), Western blot (1:1000) (Optimal dilution to be determined by the researcher)
Size:	200 µl

Immunohistochemistry Image:



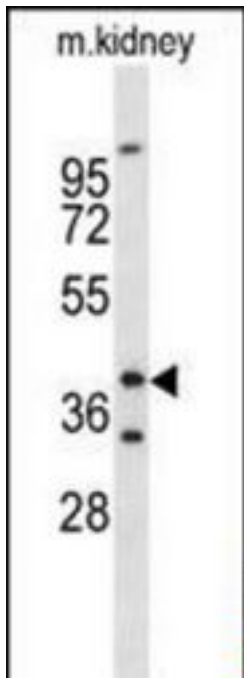
Human Testis: Formalin-Fixed, Paraffin-Embedded (FFPE)

Western Blot Image:



Western blot of FOXL1 Antibody (Center) in CHO cell line lysates (35 ug/lane).FOXL1 (arrow) was detected using the purified Pab;

Western Blot Image:



Western blot of FOXL1 Antibody (Center) in mouse kidney tissue lysates (35 ug/lane).FOXL1 (arrow) was detected using the purified Pab.

Requested From:

Japan

Laboratory Reagent For In Vitro Research Use Only

Not for resale without prior written consent from LifeSpan BioSciences, Inc.

Created on 9/24/2014

© 2014 LifeSpan BioSciences