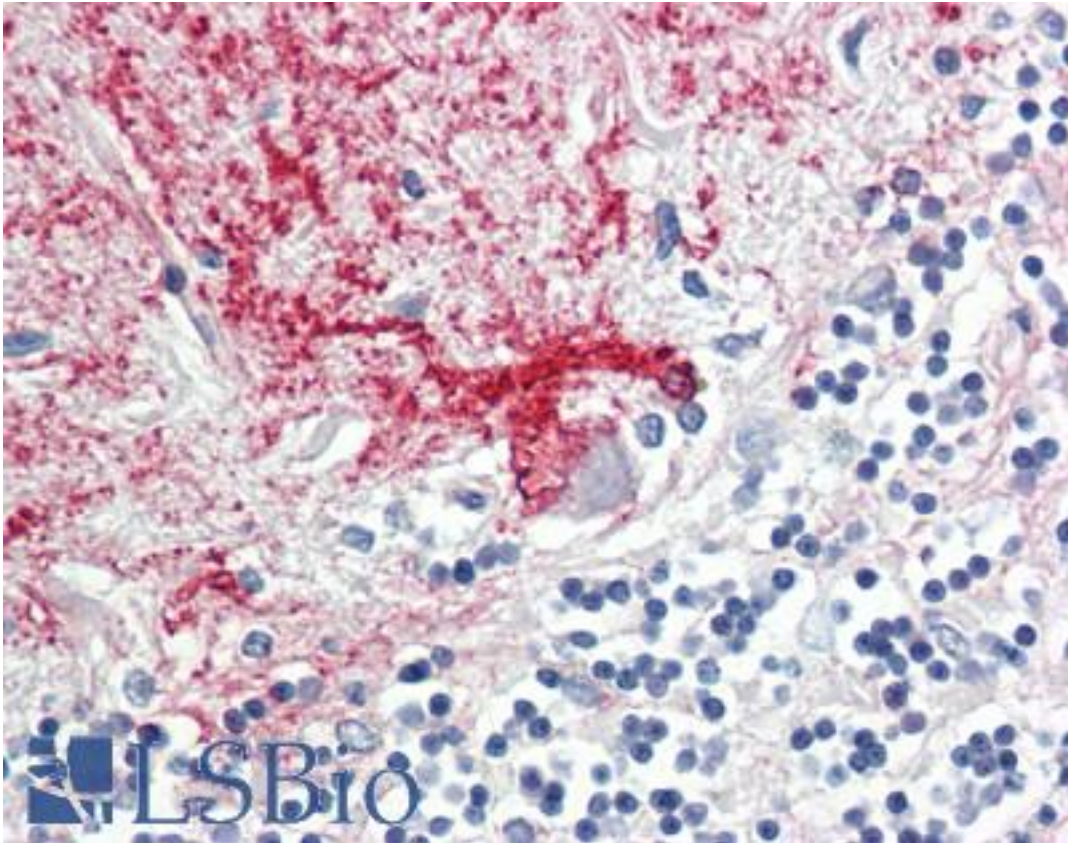


DAB1 Rabbit anti-Human Polyclonal (aa195-225) Antibody - LS-B9900 - LSBio

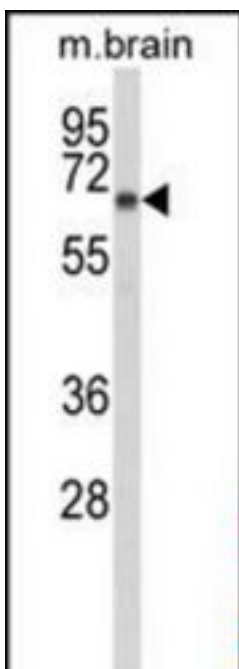
CatalogID:	LS-B9900
Validation:	This antibody replaces catalog number LS-C167259. It has been validated for use in the following assays: IHC-P.
Target:	Dab, reelin signal transducer, homolog 1 (Drosophila) (DAB1)
Synonyms:	DAB1 Antibody, Disabled homolog 1 Antibody
Host	DAB1 antibody was produced in Rabbit
Clonality:	Polyclonal
Immunogen Species:	DAB1 antibody was raised against Human
Antigen Type:	Synthetic peptide
Immunogen:	DAB1 antibody was raised against kLH-conjugated synthetic peptide from internal region of human DAB1.
Specificity:	Human DAB1
Epitope:	aa195-225
Reactivity:	Human, Mouse
Purification:	Immunoaffinity purified
Presentation:	PBS, 0.09% sodium azide
Recommended Storage:	Maintain refrigerated at 2-8°C for up to 6 months. For long term storage store at -20°C.
Uses:	IHC - Paraffin (1:50 - 1:100), Western blot (1:1000) (Optimal dilution to be determined by the researcher)
Size:	200 µl

Immunohistochemistry Image:



Human Brain, Cerebellum: Formalin-Fixed, Paraffin-Embedded (FFPE)

Western Blot Image:



Western blot of DAB1 Antibody (Center) in mouse brain tissue lysates (35 ug/lane). DAB1 (arrow) was detected using the purified Pab.

Requested From:	Japan
Laboratory Reagent For In Vitro Research Use Only	
Not for resale without prior written consent from LifeSpan BioSciences, Inc.	
Created on 9/24/2014	
© 2014 LifeSpan BioSciences	