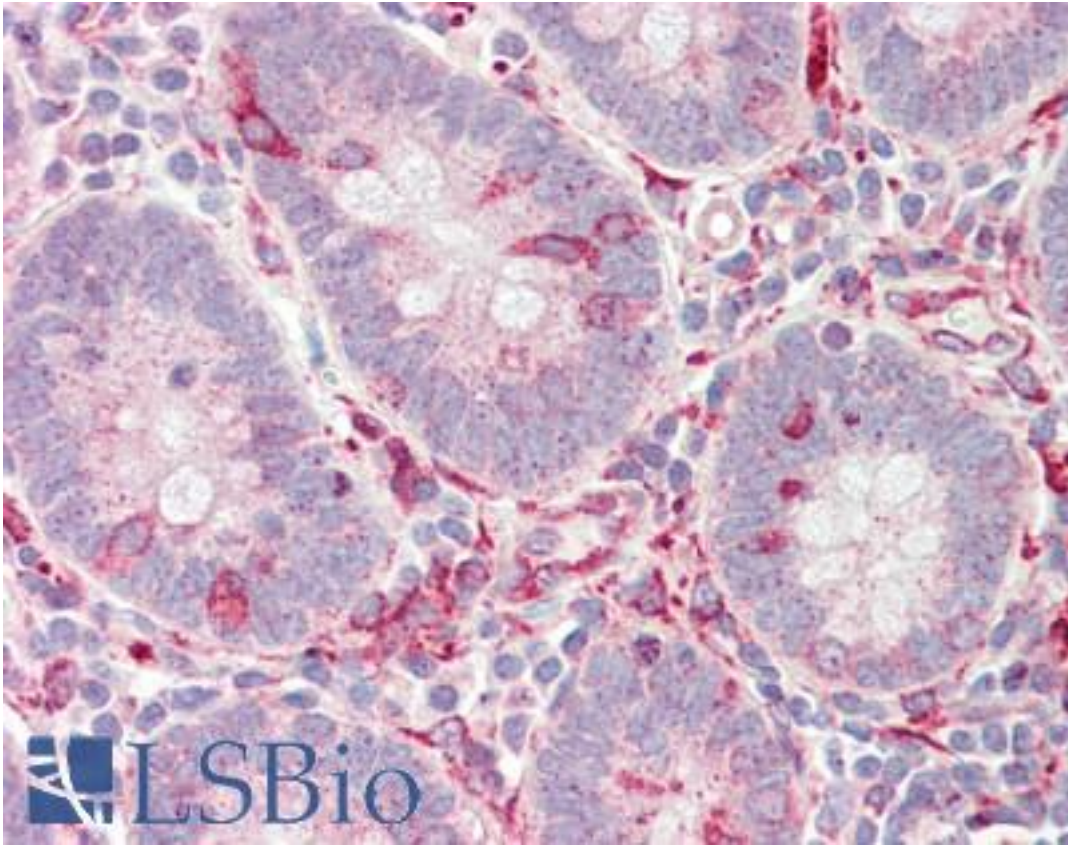


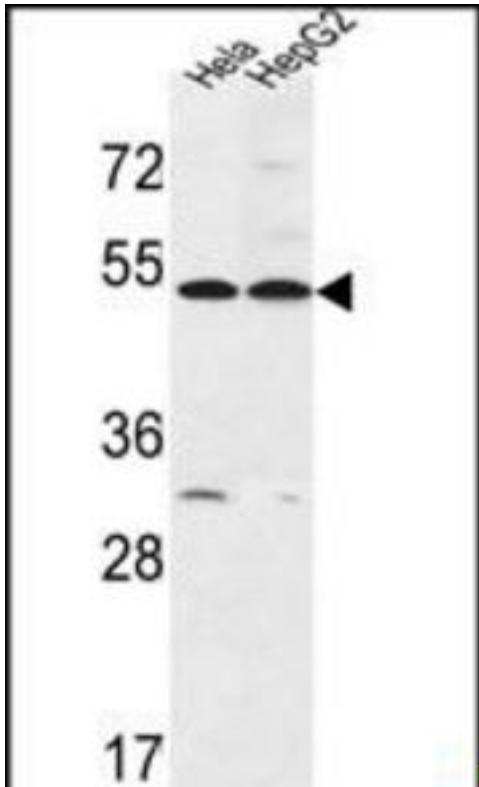
FERMT1 / Kindlin Rabbit anti-Human Polyclonal (aa275-305) Antibody - LS-B9898 - LSBio	
CatalogID:	LS-B9898
Validation:	This antibody replaces catalog number LS-C166118. It has been validated for use in the following assays: IHC-P.
Target:	fermitin family member 1 (FERMT1)
Synonyms:	FERMT1 Antibody, C20orf42 Antibody, DTGCU2 Antibody, Fermitin family homolog 1 Antibody, Kindlin syndrome protein Antibody, KIND1 Antibody, Kindlin 1 Antibody, UNC112A Antibody, URP1 Antibody, UNC112 related protein 1 Antibody, Fermitin family member 1 Antibody, Kindlerin Antibody, Kindlin Antibody, Kindlin-1 Antibody, Unc-112-related protein 1 Antibody
Host	FERMT1 antibody was produced in Rabbit
Clonality:	Polyclonal
Immunogen Species:	FERMT1 / Kindlin antibody was raised against Human
Antigen Type:	Synthetic peptide
Immunogen:	FERMT1 / Kindlin antibody was raised against kLH-conjugated synthetic peptide from internal region of human FERMT1.
Specificity:	Human FERMT1 / Kindlin
Epitope:	aa275-305
Reactivity:	Human, Mouse
Purification:	Immunoaffinity purified
Presentation:	PBS, 0.09% sodium azide
Recommended Storage:	Maintain refrigerated at 2-8°C for up to 6 months. For long term storage store at -20°C.
Uses:	IHC - Paraffin (1:100), Western blot (1:1000) (Optimal dilution to be determined by the researcher)
Size:	200 µl

Immunohistochemistry Image:



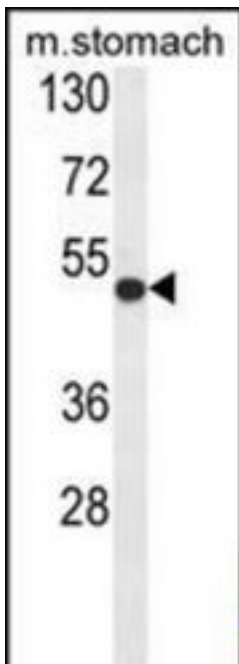
Human Small Intestine: Formalin-Fixed, Paraffin-Embedded (FFPE)

Western Blot Image:



FERMT1 Antibody (Center) Western blot of HeLa, HepG2 cell line lysates (35 ug/lane). This demonstrates the FERMT1 antibody detected the FERMT1 protein (arrow).

Western Blot Image:



Western blot of FERMT1 Antibody (Center) in mouse stomach tissue lysates (35 ug/lane). FERMT1 (arrow) was detected using the purified Pab

Requested From:

Japan

Laboratory Reagent For In Vitro Research Use Only

Not for resale without prior written consent from LifeSpan BioSciences, Inc.

Created on 9/24/2014

© 2014 LifeSpan BioSciences