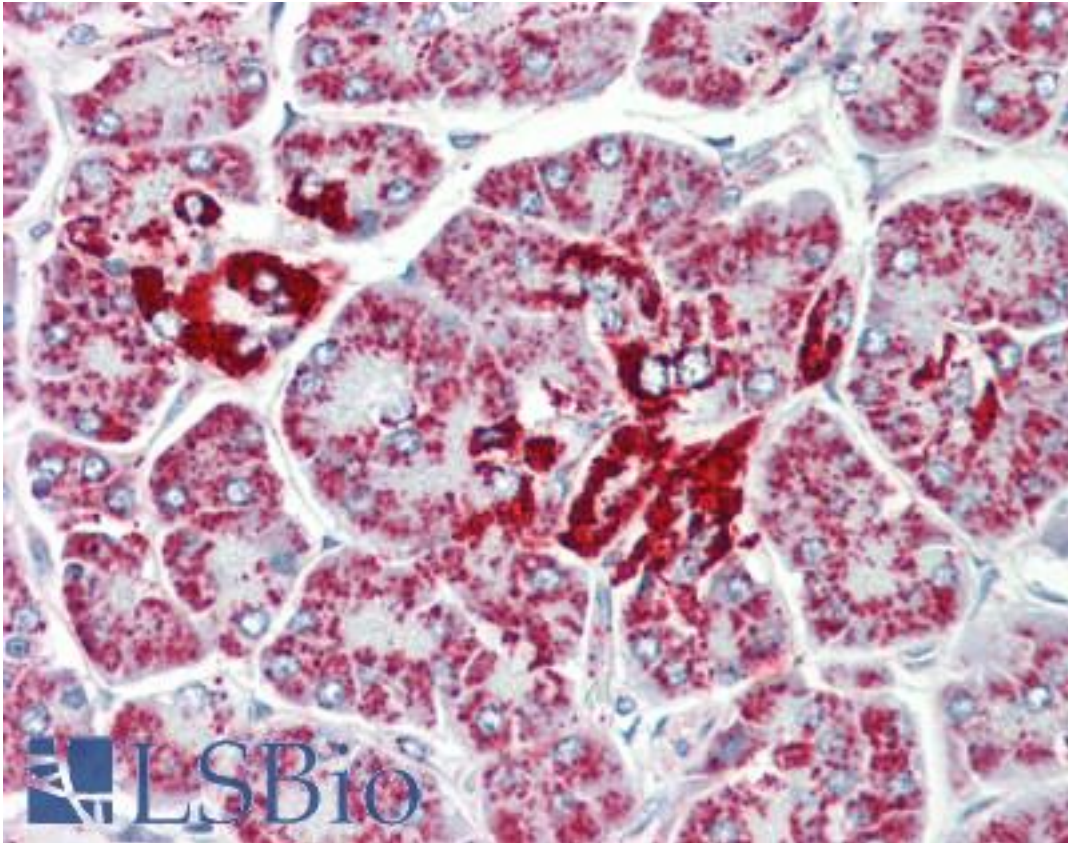


DCI / ECI1 Rabbit anti-Human Polyclonal (aa273-302) Antibody - LS-B9897 - LSBio

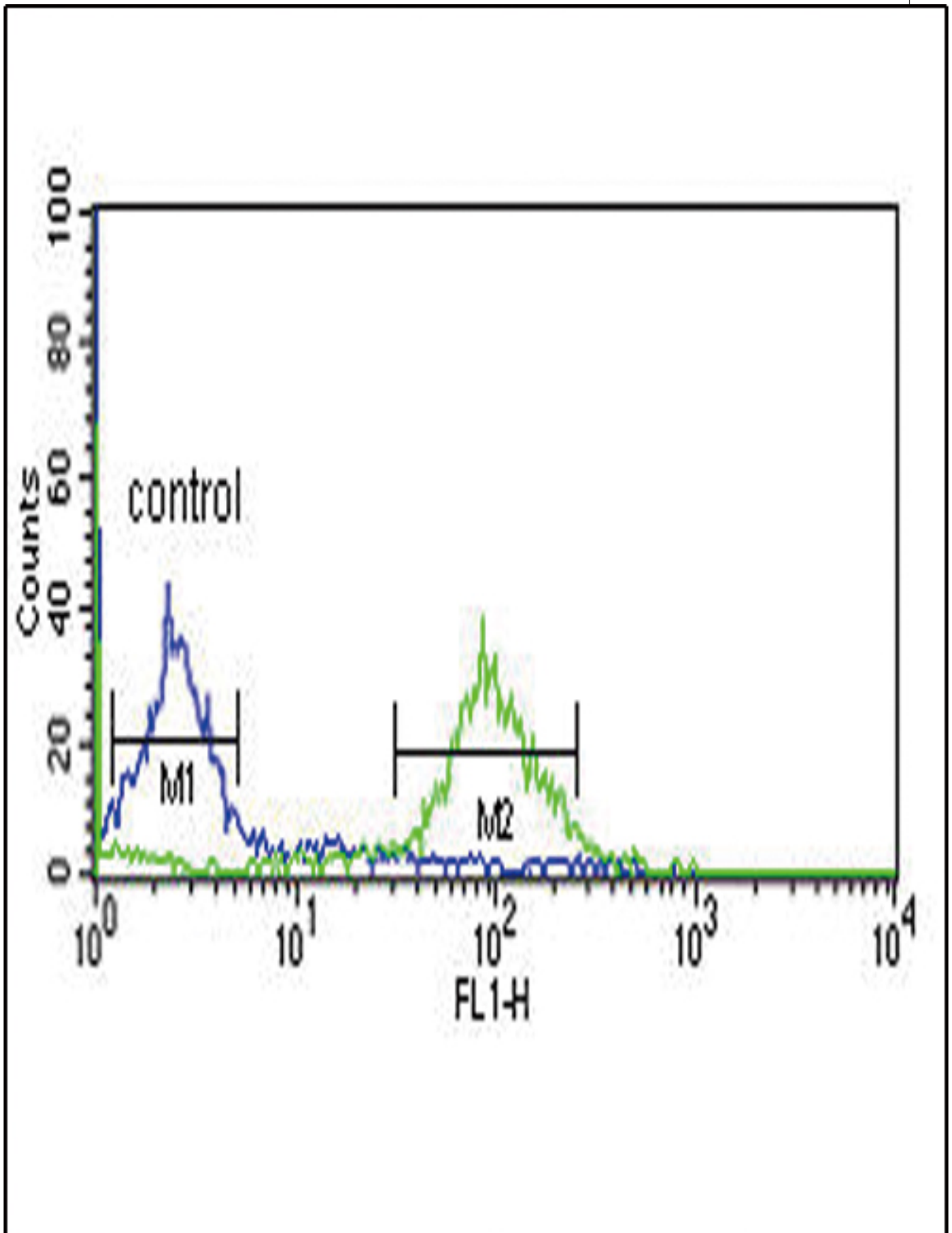
CatalogID:	LS-B9897
Validation:	This antibody replaces catalog number LS-C167293. It has been validated for use in the following assays: IHC-P.
Target:	enoyl-CoA delta isomerase 1 (ECI1)
Synonyms:	ECI1 Antibody, 3,2 trans-enoyl-CoA isomerase Antibody, 3,2-trans-enoyl-CoA isomerase Antibody, Acetylene-allene isomerase Antibody, DCI Antibody, Dodecenoyl-CoA isomerase Antibody, Enoyl-CoA delta isomerase 1 Antibody, D3,D2-enoyl-CoA isomerase Antibody
Host	ECI1 antibody was produced in Rabbit
Clonality:	Polyclonal
Immunogen Species:	DCI / ECI1 antibody was raised against Human
Antigen Type:	Synthetic peptide
Immunogen:	DCI / ECI1 antibody was raised against kLH-conjugated synthetic peptide from C-terminal region of human DCI.
Specificity:	Human DCI / ECI1
Epitope:	aa273-302
Reactivity:	Human, Mouse
Purification:	Immunoaffinity purified
Presentation:	PBS, 0.09% sodium azide
Recommended Storage:	Maintain refrigerated at 2-8°C for up to 6 months. For long term storage store at -20°C.
Uses:	IHC - Paraffin (1:10 - 1:100), Western blot (1:1000), Flow Cytometry (1:10 - 1:50) (Optimal dilution to be determined by the researcher)
Size:	200 µl

Immunohistochemistry Image:



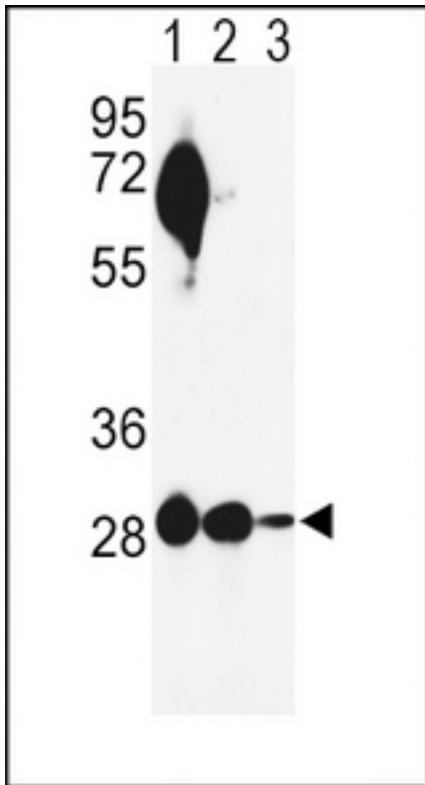
Human Pancreas: Formalin-Fixed, Paraffin-Embedded (FFPE)

Flow Cytometry Image:



DCI Antibody (C-term) flow cytometry of MCF-7 cells (right histogram) compared to a negative control cell (left histogram). FITC-conjugated goat-anti-rabbit secondary antibodies were used for the analysis.

Western Blot Image:



Western blot of DCI Antibody (C-term) in mouse heart tissue and MCF-7, HL-60 cell line lysates (35 ug/lane). DCI (arrow) was detected using the purified Pab.

Requested From:

Japan

Laboratory Reagent For In Vitro Research Use Only

Not for resale without prior written consent from LifeSpan BioSciences, Inc.

Created on 9/24/2014

© 2014 LifeSpan BioSciences