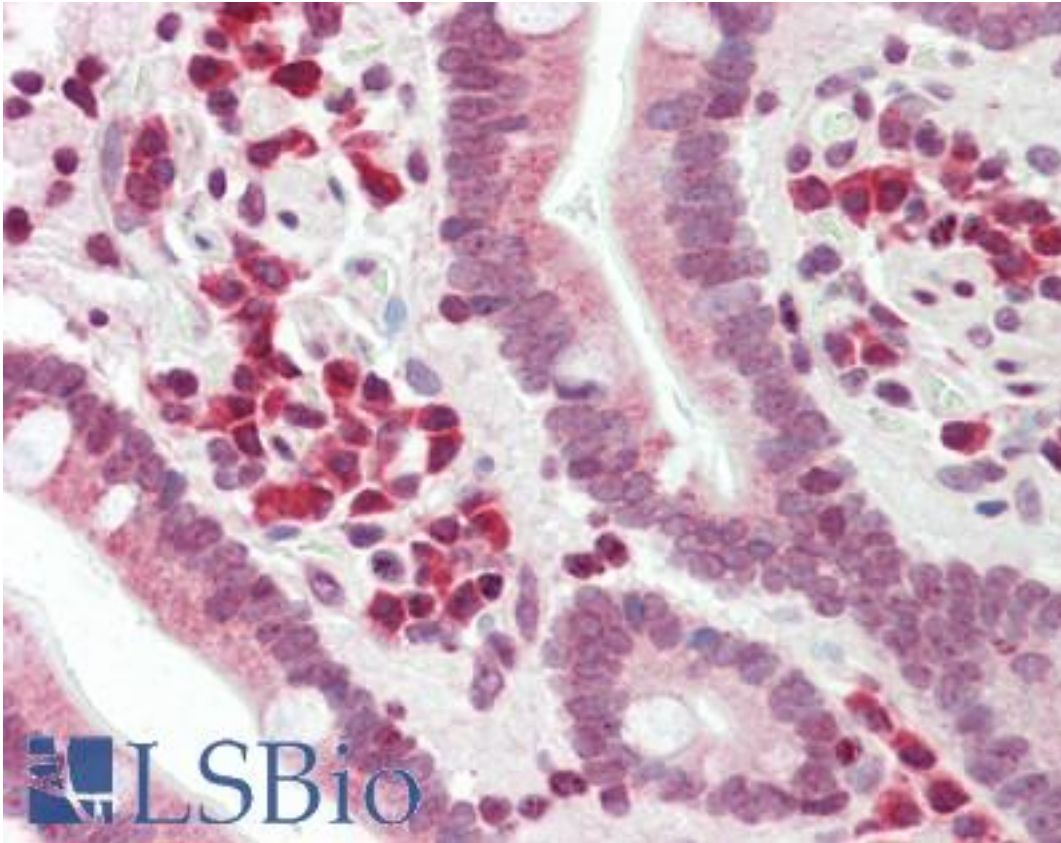


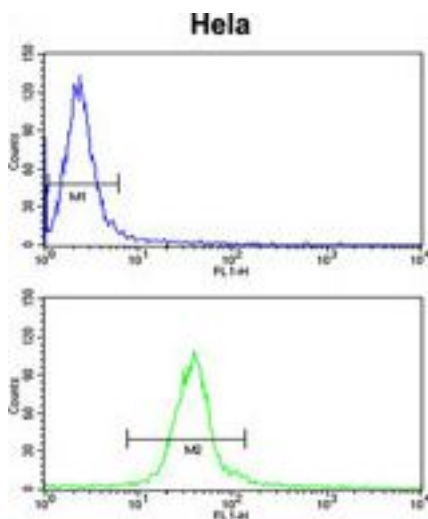
DERL1 / DERLIN 1 Rabbit anti-Human Polyclonal (aa222-251) Antibody - LS-B9896 - LSBio	
<b>CatalogID:</b>	LS-B9896
<b>Validation:</b>	This antibody replaces catalog number LS-C167367. It has been validated for use in the following assays: IHC-P.
<b>Target:</b>	derlin 1 (DERL1)
<b>Synonyms:</b>	DERL1 Antibody, DER1 Antibody, Der1-like protein 1 Antibody, Derlin-1 Antibody, DERtrin-1 Antibody, PRO2577 Antibody, DER-1 Antibody, Derlin 1 Antibody
<b>Host</b>	DERL1 antibody was produced in Rabbit
<b>Clonality:</b>	Polyclonal
<b>Immunogen Species:</b>	DERL1 / DERLIN 1 antibody was raised against Human
<b>Antigen Type:</b>	Synthetic peptide
<b>Immunogen:</b>	DERL1 / DERLIN 1 antibody was raised against kLH-conjugated synthetic peptide from C-terminal region of human DERL1.
<b>Specificity:</b>	Human DERL1 / DERLIN 1
<b>Epitope:</b>	aa222-251
<b>Reactivity:</b>	Human, Mouse
<b>Purification:</b>	Immunoaffinity purified
<b>Presentation:</b>	PBS, 0.09% sodium azide
<b>Recommended Storage:</b>	Maintain refrigerated at 2-8°C for up to 6 months. For long term storage store at -20°C.
<b>Uses:</b>	IHC - Paraffin (1:50 - 1:100), Western blot (1:1000), Flow Cytometry (1:10 - 1:50) (Optimal dilution to be determined by the researcher)
<b>Size:</b>	200 µl

**Immunohistochemistry Image:**



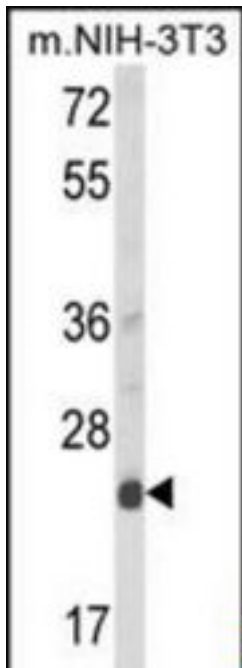
Human Small Intestine: Formalin-Fixed, Paraffin-Embedded (FFPE)

**Flow Cytometry Image:**



DERL1 Antibody (C-term) flow cytometry analysis of HeLa cells (bottom histogram) compared to a negative control cell (top histogram). FITC-conjugated goat-anti-rabbit secondary antibodies were used for the analysis.

**Western Blot Image:**



Western blot of DERL1 Antibody (C-term) in mouse NIH-3T3 cell line lysates (35 ug/lane).  
DERL1 (arrow) was detected using the purified Pab.

**Requested From:**

Japan

Laboratory Reagent For In Vitro Research Use Only

Not for resale without prior written consent from LifeSpan BioSciences, Inc.

Created on 9/24/2014

© 2014 LifeSpan BioSciences