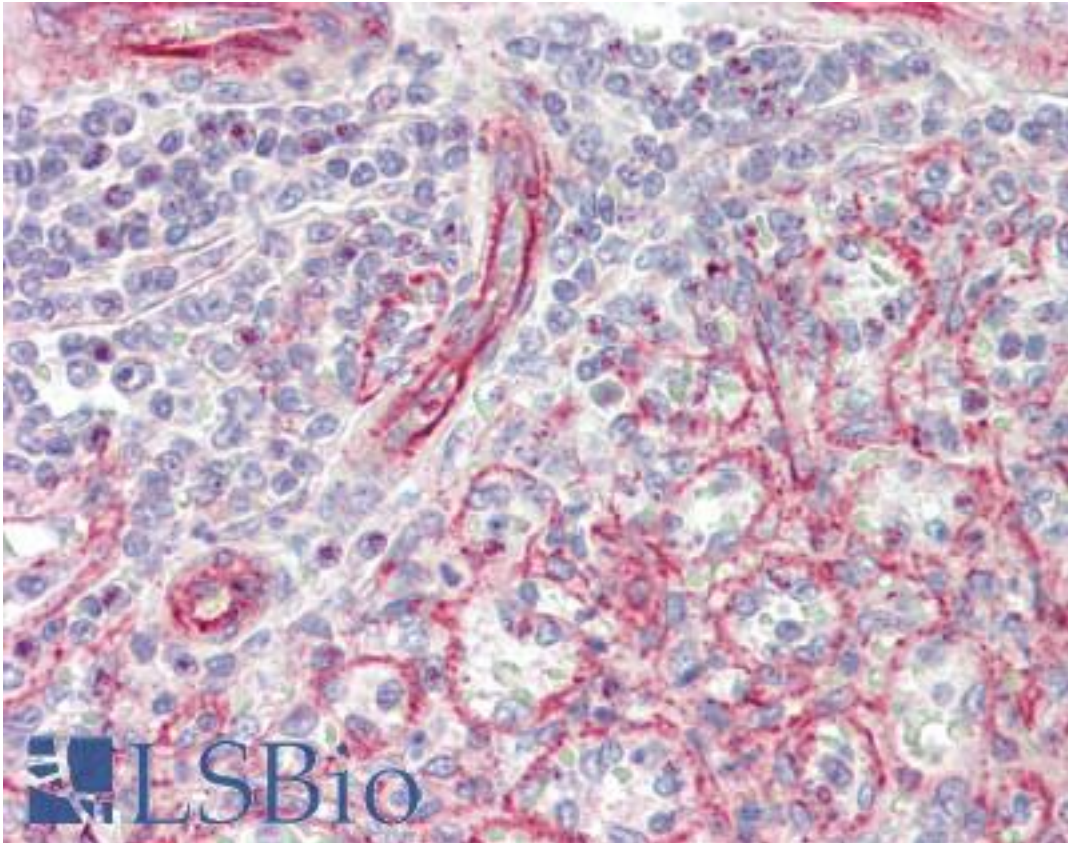


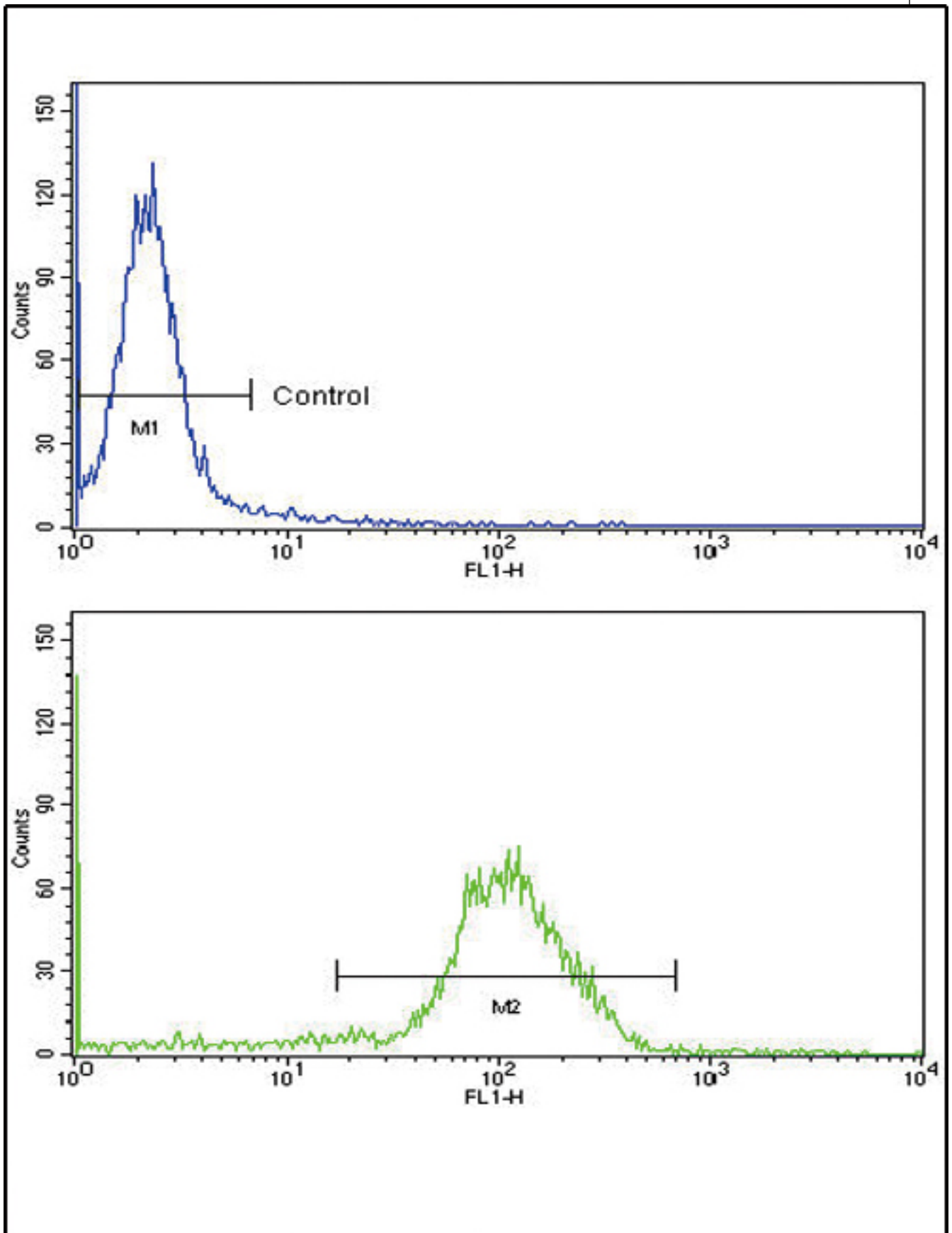
NPPA / ANP Rabbit anti-Human Polyclonal (aa36-65) Antibody - LS-B9895 - LSBio	
<b>CatalogID:</b>	LS-B9895
<b>Validation:</b>	This antibody replaces catalog number LS-C162966. It has been validated for use in the following assays: IHC-P.
<b>Target:</b>	natriuretic peptide A (NPPA)
<b>Synonyms:</b>	NPPA Antibody, ANF Antibody, ANP Antibody, Atriopeptin Antibody, ATFB6 Antibody, Atrial natriuretic factor Antibody, CDD-ANF Antibody, Cardionatrin Antibody, Natriuretic peptides A Antibody, Prepronatriodilatin Antibody, Natriuretic peptide A Antibody, PND Antibody
<b>Host</b>	NPPA antibody was produced in Rabbit
<b>Clonality:</b>	Polyclonal
<b>Immunogen Species:</b>	NPPA / ANP antibody was raised against Human
<b>Antigen Type:</b>	Synthetic peptide
<b>Immunogen:</b>	NPPA / ANP antibody was raised against kLH-conjugated synthetic peptide from N-terminal region of human NPPA.
<b>Specificity:</b>	Human ANP
<b>Epitope:</b>	aa36-65
<b>Reactivity:</b>	Human, Mouse
<b>Purification:</b>	Immunoaffinity purified
<b>Presentation:</b>	PBS, 0.09% sodium azide
<b>Recommended Storage:</b>	Maintain refrigerated at 2-8°C for up to 6 months. For long term storage store at -20°C.
<b>Uses:</b>	IHC - Paraffin (1:10 - 1:100), Western blot (1:1000), Flow Cytometry (1:10 - 1:50) (Optimal dilution to be determined by the researcher)
<b>Size:</b>	200 µl

**Immunohistochemistry Image:**



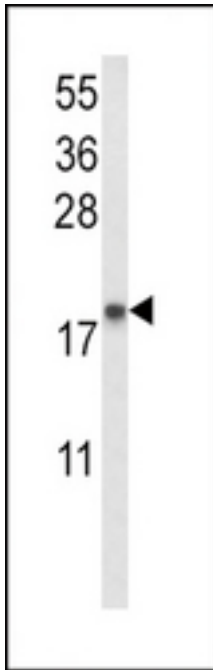
Human Spleen: Formalin-Fixed, Paraffin-Embedded (FFPE)

Flow Cytometry Image:



Flow cytometry of MDA-231 cells using NPPA Antibody (N-term)(bottom histogram) compared to a negative control cell (top histogram). FITC-conjugated goat-anti-rabbit secondary antibodies were used for the analysis.

**Western Blot Image:**



Western blot of NPPA Antibody (N-term) in mouse heart tissue lysates (35 ug/lane). NPPA (arrow) was detected using the purified Pab.

**Requested From:**

Japan

Laboratory Reagent For In Vitro Research Use Only

Not for resale without prior written consent from LifeSpan BioSciences, Inc.

Created on 9/24/2014

© 2014 LifeSpan BioSciences