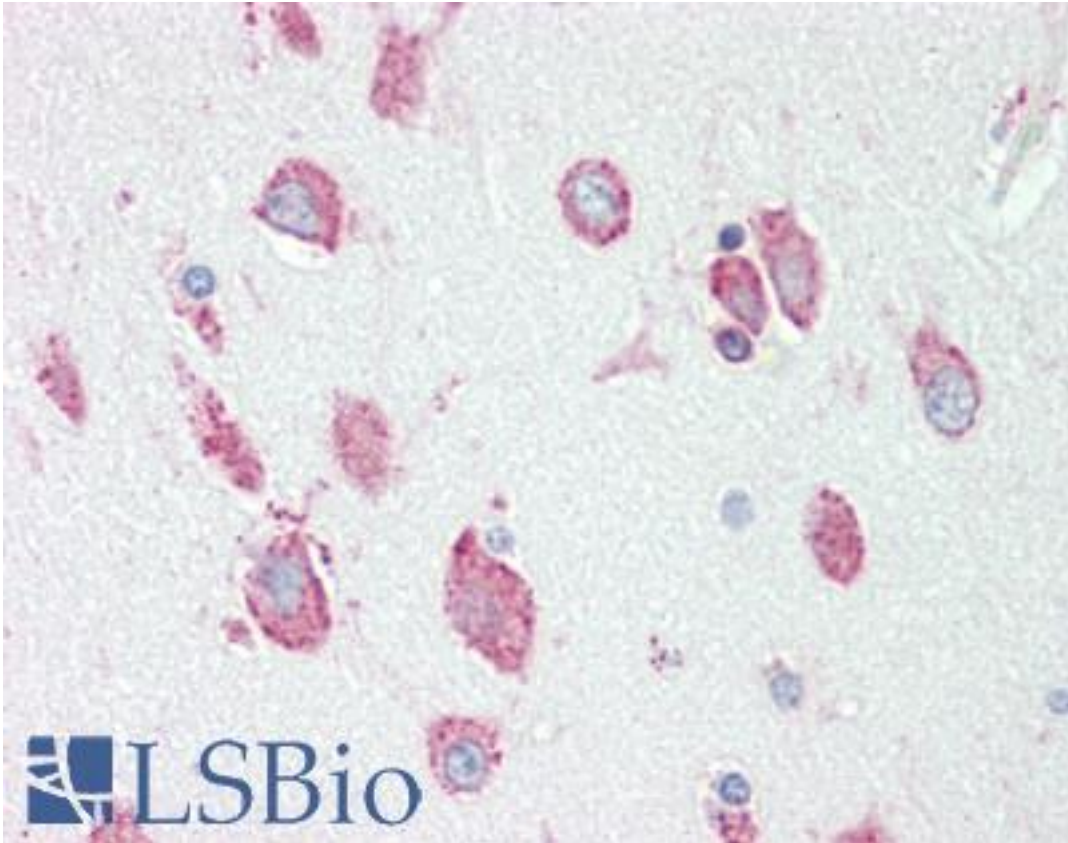


HEXA Rabbit anti-Human Polyclonal (aa149-178) Antibody - LS-B9894 - LSBio	
CatalogID:	LS-B9894
Validation:	This antibody replaces catalog number LS-C166845. It has been validated for use in the following assays: IHC-P.
Target:	hexosaminidase A (alpha polypeptide) (HEXA)
Synonyms:	HEXA Antibody, Hexosaminidase subunit A Antibody, TSD Antibody
Host	HEXA antibody was produced in Rabbit
Clonality:	Polyclonal
Immunogen Species:	HEXA antibody was raised against Human
Antigen Type:	Synthetic peptide
Immunogen:	HEXA antibody was raised against kLH-conjugated synthetic peptide from N-terminal region of human HEXA.
Specificity:	Human HEXA
Epitope:	aa149-178
Reactivity:	Human, Mouse
Purification:	Immunoaffinity purified
Presentation:	PBS, 0.09% sodium azide
Recommended Storage:	Maintain refrigerated at 2-8°C for up to 6 months. For long term storage store at -20°C.
Uses:	IHC - Paraffin (1:50 - 1:100), Western blot (1:1000), Flow Cytometry (1:10 - 1:50) (Optimal dilution to be determined by the researcher)
Size:	200 µl

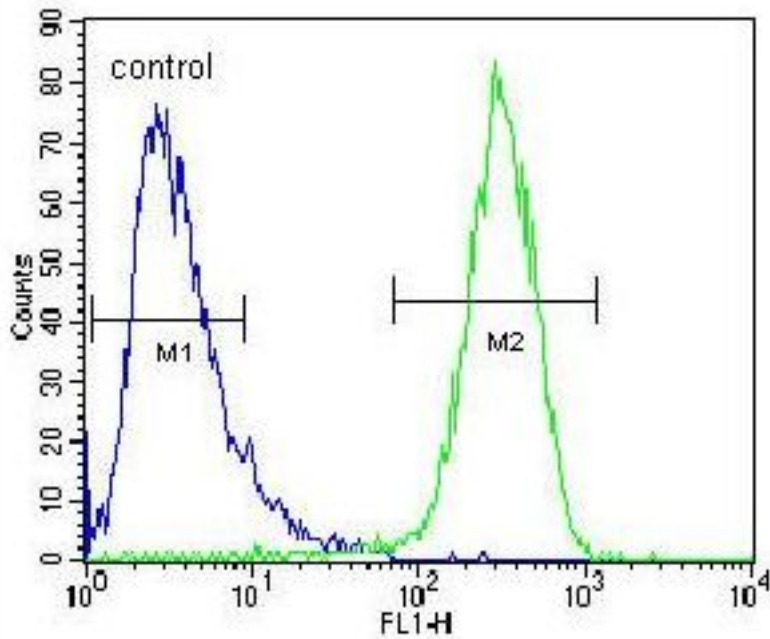
Immunohistochemistry Image:



Human Brain, Cortex: Formalin-Fixed, Paraffin-Embedded (FFPE)

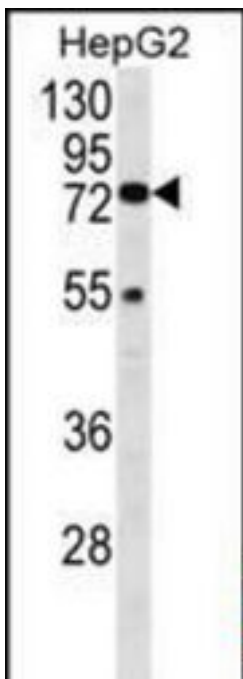
Flow Cytometry Image:

HepG2



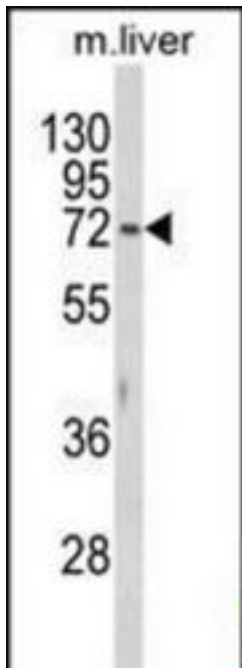
HEXA Antibody (N-term) flow cytometry of HepG2 cells (right histogram) compared to a negative control cell (left histogram). FITC-conjugated goat-anti-rabbit secondary antibodies were used for the analysis.

Western Blot Image:



Western blot of HEXA Antibody (N-term) in HepG2 cell line lysates (35 ug/lane). HEXA (arrow) was detected using the purified Pab.

Western Blot Image:



Western blot of HEXA Antibody (N-term) in mouse liver tissue lysates (35 ug/lane). HEXA (arrow) was detected using the purified Pab.

Requested From:

Japan

Laboratory Reagent For In Vitro Research Use Only

Not for resale without prior written consent from LifeSpan BioSciences, Inc.

Created on 9/24/2014

© 2014 LifeSpan BioSciences