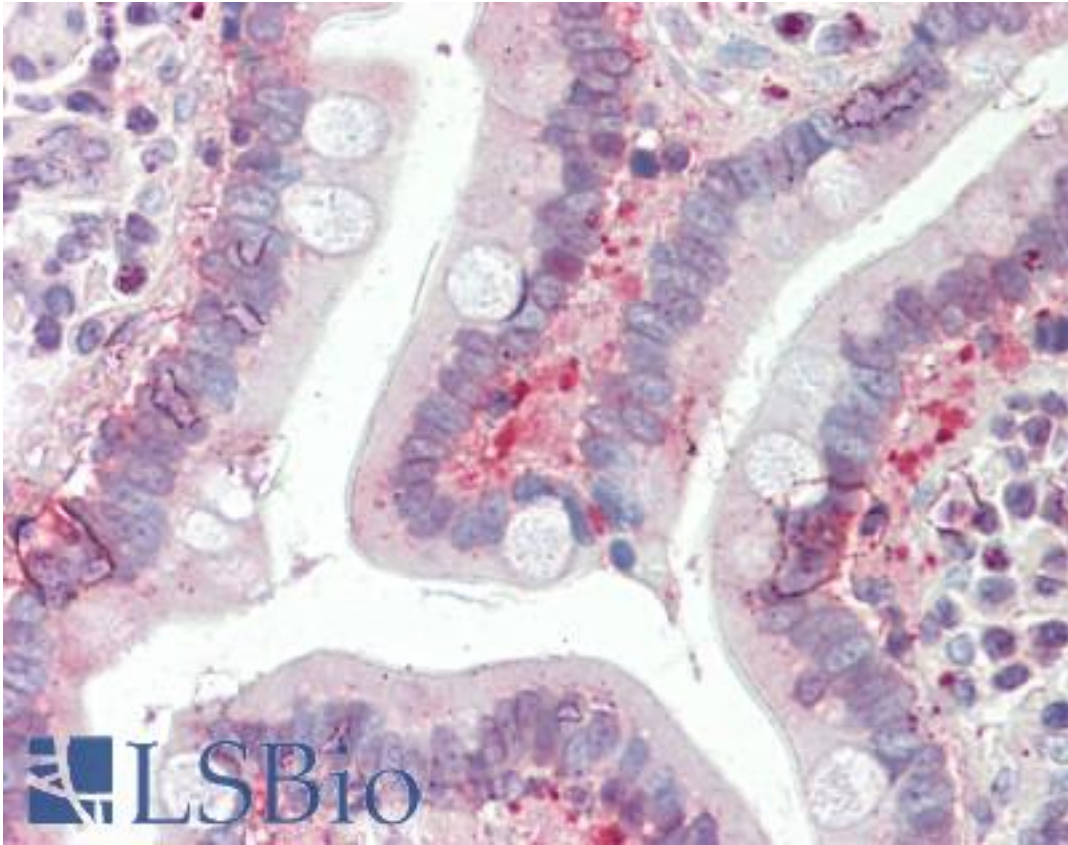


SLC25A19 Rabbit anti-Human Polyclonal (aa244-274) Antibody - LS-B9893 - LSBio

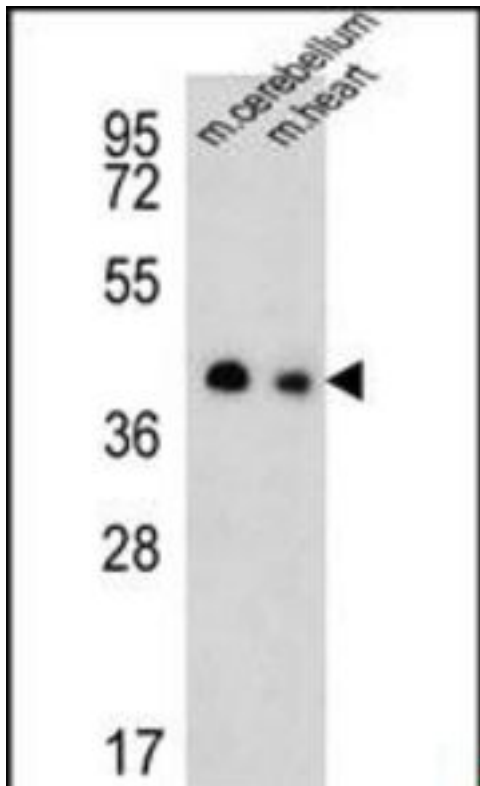
CatalogID:	LS-B9893
Validation:	This antibody replaces catalog number LS-C161182. It has been validated for use in the following assays: IHC-P.
Target:	solute carrier family 25 (mitochondrial thiamine pyrophosphate carrier), member 19 (SLC25A19)
Synonyms:	SLC25A19 Antibody, DNC Antibody, THMD4 Antibody, MCPHA Antibody, TPC Antibody, Microcephaly, Amish Antibody, THMD3 Antibody
Family / Subfamily:	Transporter / Mitochondrial carrier
Host	SLC25A19 antibody was produced in Rabbit
Clonality:	Polyclonal
Immunogen Species:	SLC25A19 antibody was raised against Human
Antigen Type:	Synthetic peptide
Immunogen:	SLC25A19 antibody was raised against kLH-conjugated synthetic peptide from C-terminal region of human SLC25A19.
Specificity:	Human SLC25A19
Epitope:	aa244-274
Reactivity:	Human, Mouse
Purification:	Immunoaffinity purified
Presentation:	PBS, 0.09% sodium azide
Recommended Storage:	Maintain refrigerated at 2-8°C for up to 6 months. For long term storage store at -20°C.
Uses:	IHC - Paraffin (1:100), Western blot (1:1000) (Optimal dilution to be determined by the researcher)
Size:	200 µl

Immunohistochemistry Image:



Human Small Intestine: Formalin-Fixed, Paraffin-Embedded (FFPE)

Western Blot Image:



Western blot of SLC25A19 Antibody (C-term) in mouse cerebellum,heart tissue lysates (35 ug/lane).SLC25A19 (arrow) was detected using the purified Pab.

Requested From:

Japan

Laboratory Reagent For In Vitro Research Use Only

Not for resale without prior written consent from LifeSpan BioSciences, Inc.

Created on 9/24/2014

© 2014 LifeSpan BioSciences