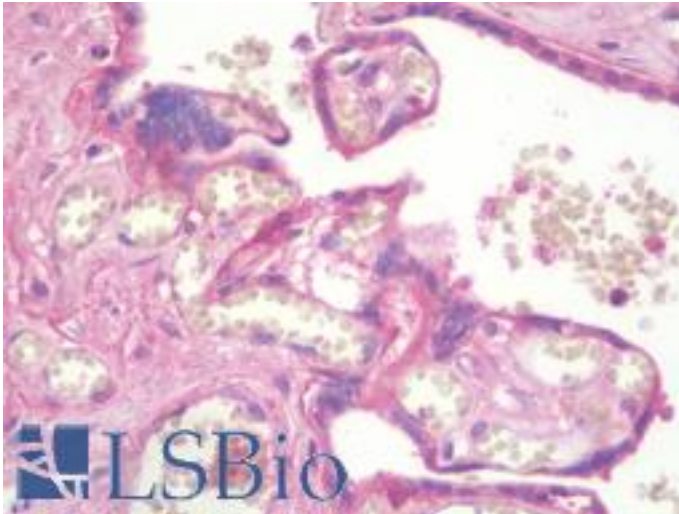


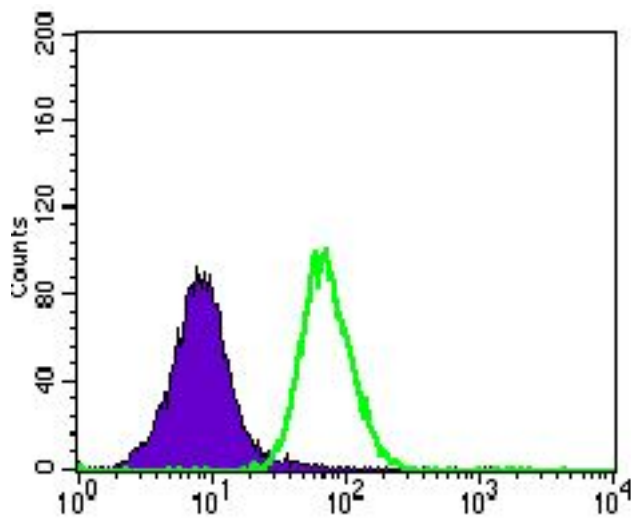
ITGB4 / Integrin Beta 4 Mouse anti-Human Monoclonal (aa1619-1822) (10B10D5) Antibody - LS-B9845 - LSBio	
CatalogID:	LS-B9845
Validation:	This antibody replaces catalog number LS-C191818. It has been validated for use in the following assays: IHC-P.
Target:	integrin, beta 4 (ITGB4)
Synonyms:	ITGB4 Antibody, CD104 Antibody, Integrin beta-4 Antibody, Integrin Beta 4 Antibody, gp150 Antibody, CD104 antigen Antibody, Integrin beta-4 subunit Antibody, Integrin, beta 4 Antibody
Family / Subfamily:	Integrin / not assigned-Integrin
Host	ITGB4 antibody was produced in Mouse
Clonality:	Monoclonal
Isotype:	IgG1
Clone Name:	10B10D5
Immunogen Species:	ITGB4 / Integrin Beta 4 antibody was raised against Human
Antigen Type:	Recombinant protein
Immunogen:	ITGB4 / Integrin Beta 4 antibody was raised against purified recombinant fragment of human ITGB4 (AA: 1619-1822)
Specificity:	Human ITGB4 / Integrin Beta 4
Epitope:	aa1619-1822
Reactivity:	Human
Purification:	Ascites
Presentation:	Ascites, 0.03% sodium azide
Recommended Storage:	Short term +4°C; Long term -20°C
Uses:	IHC - Paraffin (1:100), Western blot (1:500 - 1:2000), Flow Cytometry (1:200 - 1:400), ELISA (1:10000) (Optimal dilution to be determined by the researcher)
Size:	50 µl

Immunohistochemistry Image:



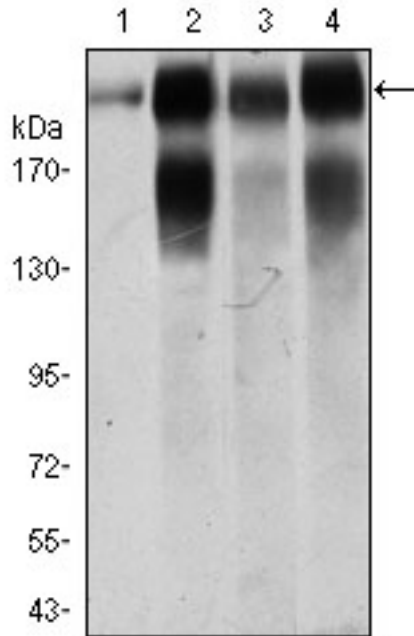
Human Placenta: Formalin-Fixed, Paraffin-Embedded (FFPE)

Flow Cytometry Image:



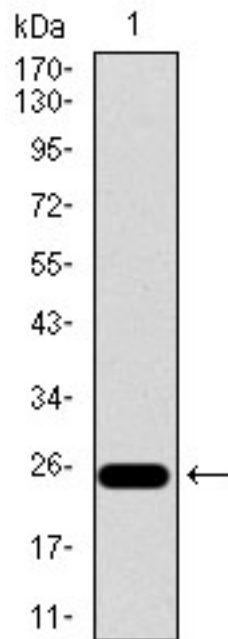
Flow cytometry of A549 cells using ITGB4 mouse mAb (green) and negative control (purple).

Western Blot Image:



Western blot of ITGB4 mouse mAb against A549 (1), A431 (2), MCF-7 (3) and SW620 (4) cell lysate.

Western Blot Image:



Western blot of ITGB4 mAb against human ITGB4 recombinant protein. (Expected MW is 24 kDa)

Requested From:

Japan

Laboratory Reagent For In Vitro Research Use Only

Not for resale without prior written consent from LifeSpan BioSciences, Inc.

Created on 9/24/2014

© 2014 LifeSpan BioSciences