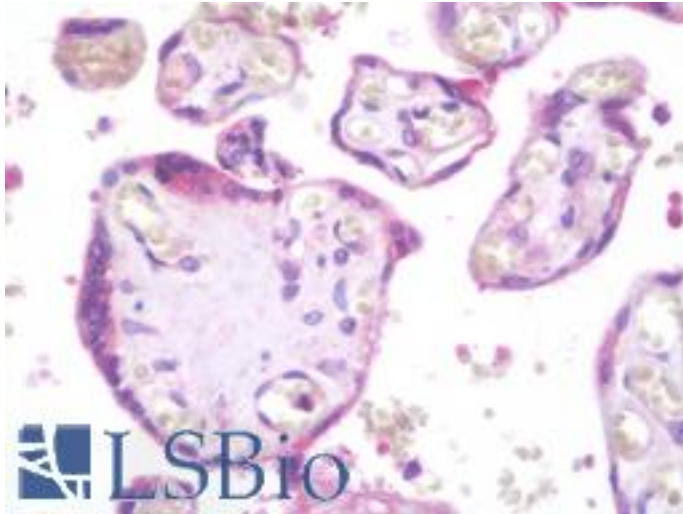


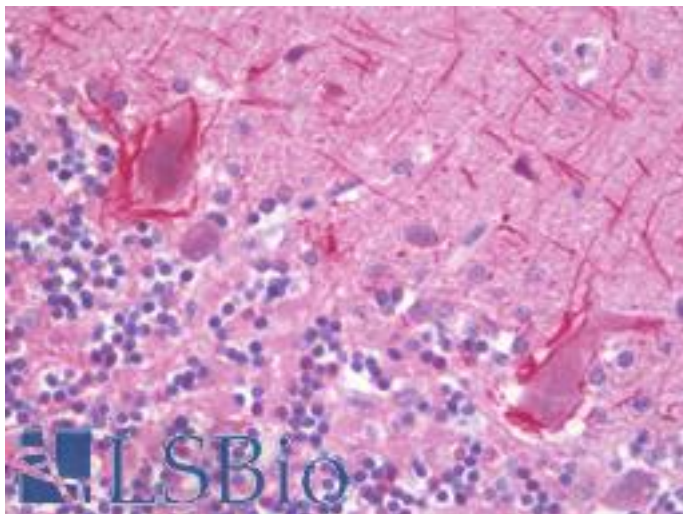
BPIFA2 Mouse anti-Mouse Monoclonal (1F12) Antibody - LS-B9833 - LSBio	
CatalogID:	LS-B9833
Validation:	This antibody replaces catalog number LS-C169182. It has been validated for use in the following assays: IHC-P.
Target:	BPI fold containing family A, member 2 (BPIFA2)
Synonyms:	BPIFA2 Antibody, C20orf70 Antibody, BA49G10.1 Antibody, PSP Antibody, SPLUNC2 Antibody
Host	BPIFA2 antibody was produced in Mouse
Clonality:	Monoclonal
Isotype:	IgG1
Clone Name:	1F12
Immunogen Species:	BPIFA2 antibody was raised against Mouse
Antigen Type:	Recombinant protein
Immunogen:	BPIFA2 antibody was raised against purified recombinant fragment of mouse Splunc2 expressed in E. coli.
Specificity:	Mouse BPIFA2
Reactivity:	Mouse, Human
Purification:	Purified
Presentation:	PBS, 0.05% sodium azide, 0.05% protein stabilizer
Recommended Storage:	Long term: -20°C; Short term: +4°C; Avoid freeze-thaw cycles.
Uses:	IHC (10 µg/ml), ICC (1:200 - 1:1000), Immunofluorescence (1:1000), Western blot (1:500 - 1:2000), Flow Cytometry (1:200 - 1:400), ELISA (1:10000) (Optimal dilution to be determined by the researcher)
Size:	50 µg
Concentration:	1 mg/ml

Immunohistochemistry Image:



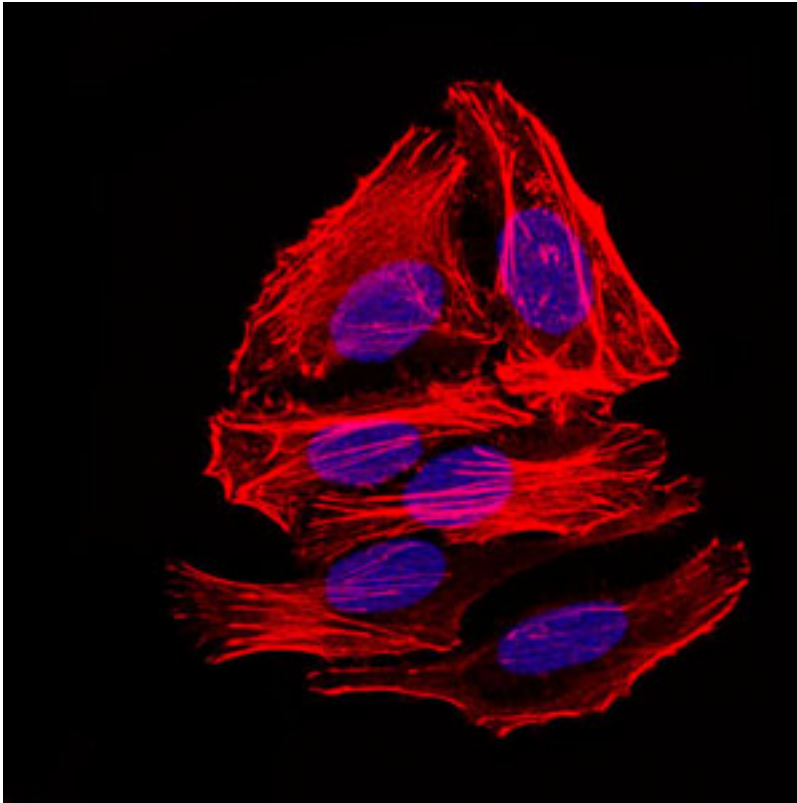
Human Placenta: Formalin-Fixed, Paraffin-Embedded (FFPE)

Immunohistochemistry Image:



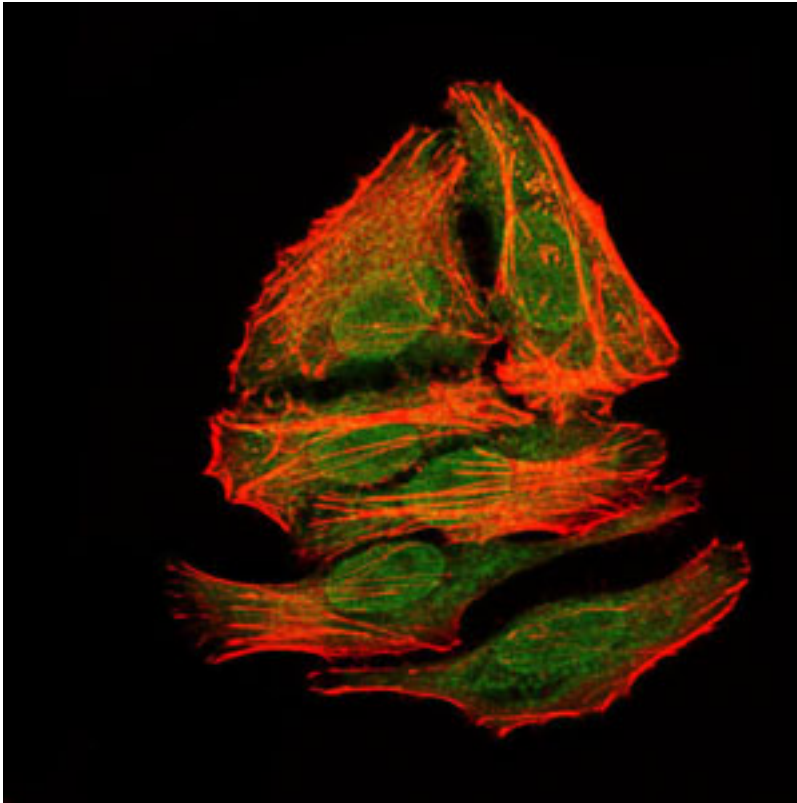
Human Brain, Cerebellum: Formalin-Fixed, Paraffin-Embedded (FFPE)

Immunofluorescence Image:



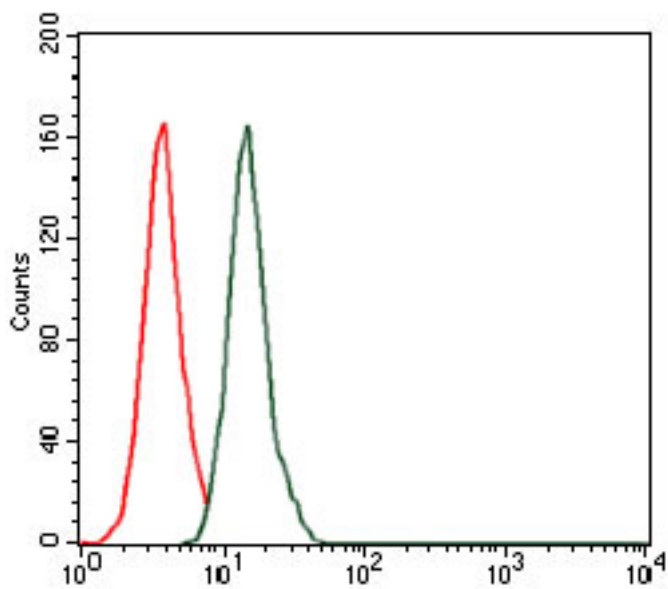
Immunofluorescence of HepG2 cells. Blue: DRAQ5 fluorescent DNA dye. Red: Actin filaments have been labeled with Alexa Fluor-555 phalloidin.

Immunofluorescence Image:



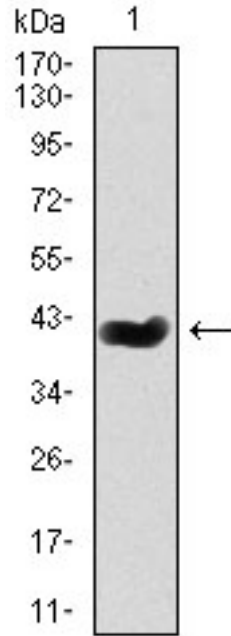
Immunofluorescence of HepG2 cells using mouse Splunc2 mouse mAb (green). Red: Actin filaments have been labeled with Alexa Fluor-555 phalloidin.

Flow Cytometry Image:



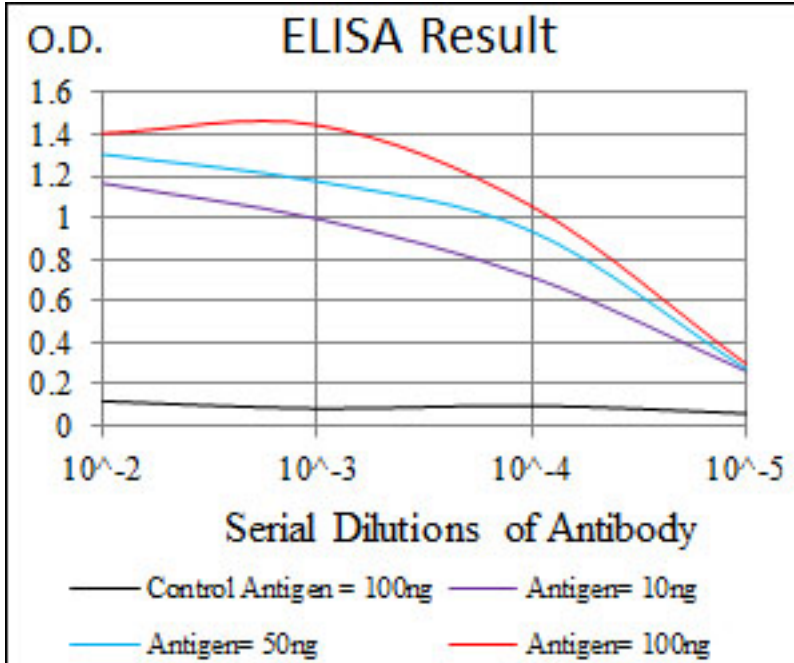
Flow cytometry of HeLa cells using mouse Splunc2 mouse mAb (green) and negative control (red).

Western Blot Image:



Western blot of mouse Splunc2 mAb against mouse Splunc2 (AA: 16-169) recombinant protein. (Expected MW is 41.6 kDa)

ELISA Image:



Red: Control Antigen (100ng); Purple: Antigen (10ng); Green: Antigen (50ng); Blue: Antigen (100ng);

Requested From:

Japan

Laboratory Reagent For In Vitro Research Use Only

Not for resale without prior written consent from LifeSpan BioSciences, Inc.

Created on 9/24/2014

© 2014 LifeSpan BioSciences