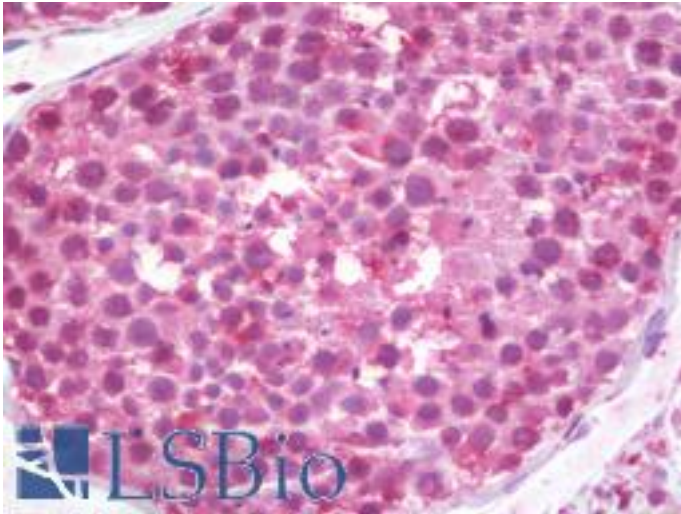


Alpha Tubulin Mouse Monoclonal (TU-16) Antibody - LS-B9831 - LSBio	
CatalogID:	LS-B9831
Validation:	This antibody replaces catalog number LS-C132721. It has been validated for use in the following assays: IHC-P.
Target:	Tubulin Alpha
Host	Tubulin Alpha antibody was produced in Mouse
Clonality:	Monoclonal
Isotype:	IgM
Clone Name:	TU-16
Immunogen:	Alpha Tubulin antibody was raised against tubulin, alpha.
Specificity:	Recognizes Tubulin, alpha under both denaturing and non-denaturing conditions. Species cross-reactivity: Human, mouse, rat, hamster, porcine, bovine, chicken, plants and protozoa.
Reactivity:	Human, Mouse, Rat, Bovine, Hamster, Pig, Chicken, Plant, Protozoa
Purification:	Purified from ascites by precipitation methods.
Presentation:	PBS, pH 7.4, 15 mM sodium azide
Recommended Storage:	May be stored at 4°C for short-term only. Aliquot to avoid repeated freezing and thawing. Store at -20°C. Aliquots are stable for at least 12 months.
Usage Summary:	Suitable for use in Immunofluorescence, ELISA, Western Blot, Immunohistochemistry and Immunoprecipitation.
Uses:	IHC - Paraffin (10 µg/ml), Immunofluorescence, Western blot, Immunoprecipitation, ELISA (Optimal dilution to be determined by the researcher)
Size:	50 µg
Concentration:	1 mg/ml

Immunohistochemistry Image:



Human Testis: Formalin-Fixed, Paraffin-Embedded (FFPE)

Requested From:

Japan

Laboratory Reagent For In Vitro Research Use Only

Not for resale without prior written consent from LifeSpan BioSciences, Inc.

Created on 9/24/2014

© 2014 LifeSpan BioSciences