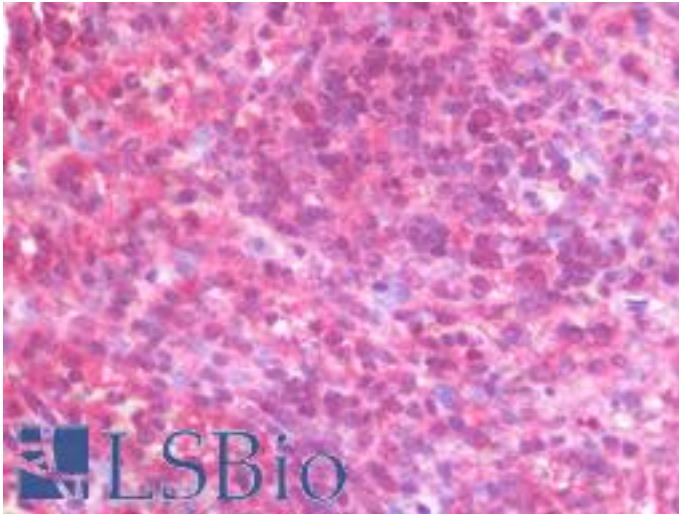


BTLA / CD272 Mouse anti-Human Monoclonal (4C2) Antibody - LS-B9827 - LSBio

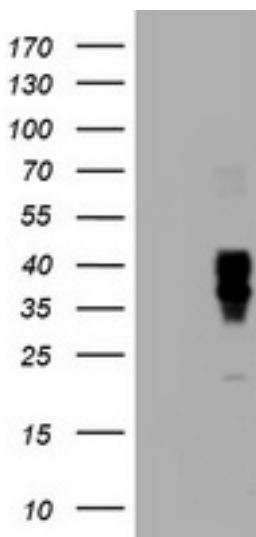
CatalogID:	LS-B9827
Validation:	This antibody replaces catalog number LS-C174398. It has been validated for use in the following assays: IHC-P.
Target:	B and T lymphocyte associated (BTLA)
Synonyms:	BTLA Antibody, BTLA1 Antibody, B and T lymphocyte associated Antibody, CD272 Antibody, B and T lymphocyte attenuator Antibody, B- and T-lymphocyte attenuator Antibody, CD272 antigen Antibody
Host	BTLA antibody was produced in Mouse
Clonality:	Monoclonal
Isotype:	IgG2b
Clone Name:	4C2
Immunogen Species:	BTLA / CD272 antibody was raised against Human
Antigen Type:	Recombinant protein
Immunogen:	BTLA / CD272 antibody was raised against full length human recombinant protein of human BTLA(NP_861445) produced in HEK293T cell.
Specificity:	Human BTLA
Reactivity:	Human
Purification:	Protein A/G purified
Presentation:	PBS, pH 7.3, 1% BSA, 50% glycerol, 0.02% sodium azide
Recommended Storage:	Store at -20°C. Minimize freezing and thawing.
Uses:	IHC - Paraffin (10 µg/ml), Western blot (1:2000) (Optimal dilution to be determined by the researcher)
Size:	50 µl
Concentration:	1 mg/ml

Immunohistochemistry Image:



Human Spleen: Formalin-Fixed, Paraffin-Embedded (FFPE)

Western Blot Image:



HEK293T cells were transfected with the pCMV6-ENTRY control (Left lane) or pCMV6-ENTRY BTLA (Right lane) cDNA for 48 hrs and lysed. Equivalent amounts of cell lysates (5 ug per lane) were separated by SDS-PAGE and immunoblotted with anti-BTLA.

Requested From:

Japan

Laboratory Reagent For In Vitro Research Use Only

Not for resale without prior written consent from LifeSpan BioSciences, Inc.

Created on 9/24/2014

© 2014 LifeSpan BioSciences