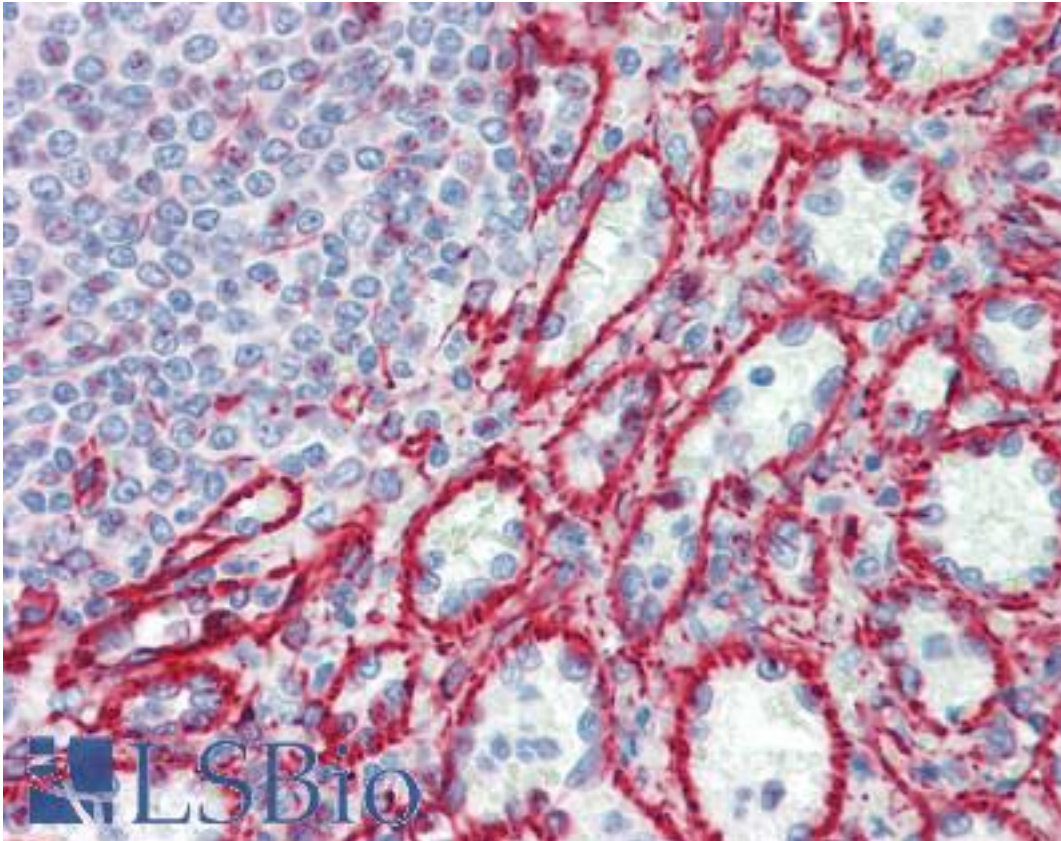


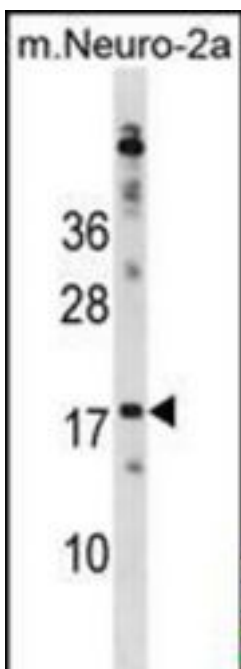
RPL30 Rabbit anti-Human Polyclonal (aa1-30) Antibody - LS-B9822 - LSBio	
<b>CatalogID:</b>	LS-B9822
<b>Validation:</b>	This antibody replaces catalog number LS-C156012. It has been validated for use in the following assays: IHC-P.
<b>Target:</b>	ribosomal protein L30 (RPL30)
<b>Synonyms:</b>	RPL30 Antibody, 60S ribosomal protein L30 Antibody, L30 Antibody, Ribosomal protein L30 Antibody
<b>Host</b>	RPL30 antibody was produced in Rabbit
<b>Clonality:</b>	Polyclonal
<b>Immunogen Species:</b>	RPL30 antibody was raised against Human
<b>Antigen Type:</b>	Synthetic peptide
<b>Immunogen:</b>	RPL30 antibody was raised against kLH-conjugated synthetic peptide from N-terminal region of human RPL30.
<b>Specificity:</b>	Human RPL30
<b>Epitope:</b>	aa1-30
<b>Reactivity:</b>	Human, Mouse
<b>Purification:</b>	Immunoaffinity purified
<b>Presentation:</b>	PBS, 0.09% sodium azide
<b>Recommended Storage:</b>	Maintain refrigerated at 2-8°C for up to 6 months. For long term storage store at -20°C.
<b>Uses:</b>	IHC - Paraffin (1:100), Western blot (1:1000) (Optimal dilution to be determined by the researcher)
<b>Size:</b>	200 µl

**Immunohistochemistry Image:**



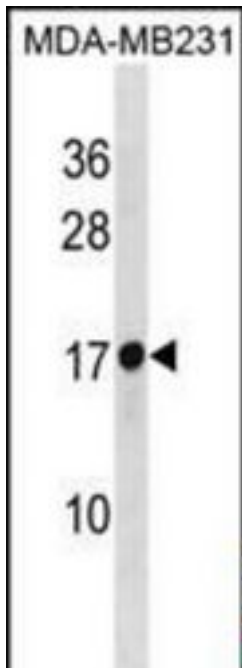
Human Spleen: Formalin-Fixed, Paraffin-Embedded (FFPE)

**Western Blot Image:**



RPL30 Antibody (N-term) Western blot of mouse Neuro-2a cell line lysates (35 ug/lane). This demonstrates the RPL30 antibody detected the RPL30 protein (arrow).

**Western Blot Image:**



RPL30 Antibody (N-term) Western blot of MDA-MB231 cell line lysates (35 ug/lane). This demonstrates the RPL30 antibody detected the RPL30 protein (arrow).

**Requested From:**

Japan

Laboratory Reagent For In Vitro Research Use Only

Not for resale without prior written consent from LifeSpan BioSciences, Inc.

Created on 9/24/2014

© 2014 LifeSpan BioSciences