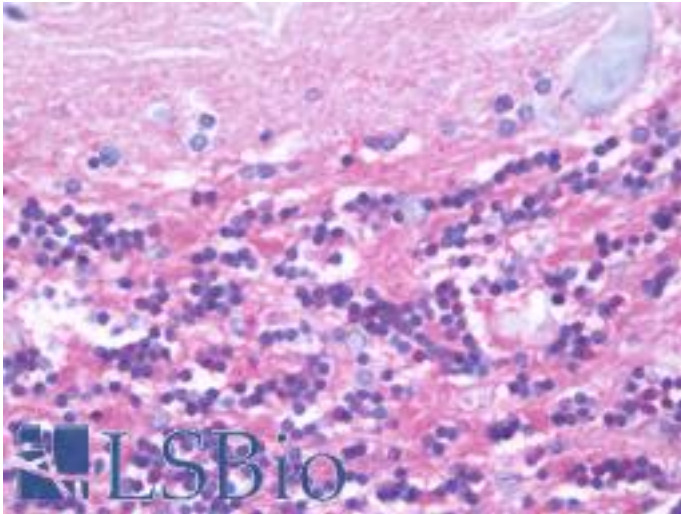


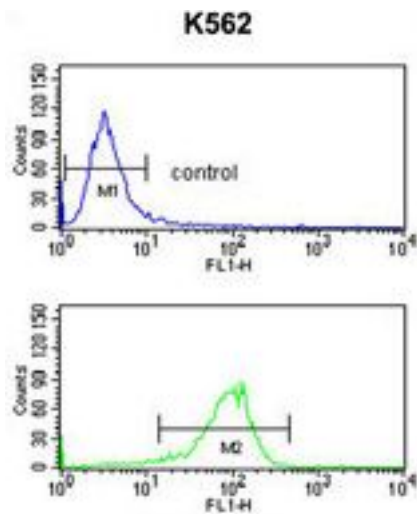
AMOG / ATP1B2 Rabbit anti-Human Polyclonal (aa115 - 141) Antibody - LS-B9819 - LSBio	
CatalogID:	LS-B9819
Validation:	This antibody replaces catalog number LS-C156645. It has been validated for use in the following assays: IHC-P.
Target:	ATPase, Na+/K+ transporting, beta 2 polypeptide (ATP1B2)
Synonyms:	ATP1B2 Antibody, Adhesion molecule on glia Antibody, AMOG Antibody
Family / Subfamily:	Transporter / ATPase - P type, beta subunit
Host	ATP1B2 antibody was produced in Rabbit
Clonality:	Polyclonal
Immunogen Species:	AMOG / ATP1B2 antibody was raised against Human
Antigen Type:	Synthetic peptide
Immunogen:	AMOG / ATP1B2 antibody was raised against kLH-conjugated synthetic peptide from internal region of human ATP1B2.
Specificity:	Human AMOG / ATP1B2
Epitope:	aa115 - 141
Reactivity:	Human
Purification:	Immunoaffinity purified
Presentation:	PBS, 0.09% sodium azide
Recommended Storage:	Maintain refrigerated at 2-8°C for up to 6 months. For long term storage store at -20°C.
Uses:	IHC - Paraffin (1:100), Western blot (1:1000), Flow Cytometry (1:10 - 1:50) (Optimal dilution to be determined by the researcher)
Size:	200 µl

Immunohistochemistry Image:



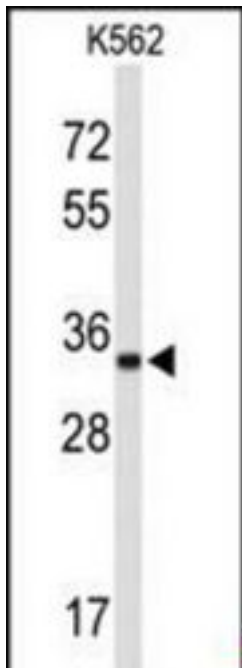
Human Brain, Cerebellum: Formalin-Fixed, Paraffin-Embedded (FFPE)

Flow Cytometry Image:



ATP1B2 Antibody (Center) flow cytometry analysis of K562 cells (bottom histogram) compared to a negative control cell (top histogram). FITC-conjugated goat-anti-rabbit secondary antibodies were used for the analysis.

Western Blot Image:



Western blot of ATP1B2 Antibody (Center) in K562 cell line lysates (35 ug/lane). ATP1B2 (arrow) was detected using the purified Pab.

Requested From:

Japan

Laboratory Reagent For In Vitro Research Use Only

Not for resale without prior written consent from LifeSpan BioSciences, Inc.

Created on 9/24/2014

© 2014 LifeSpan BioSciences