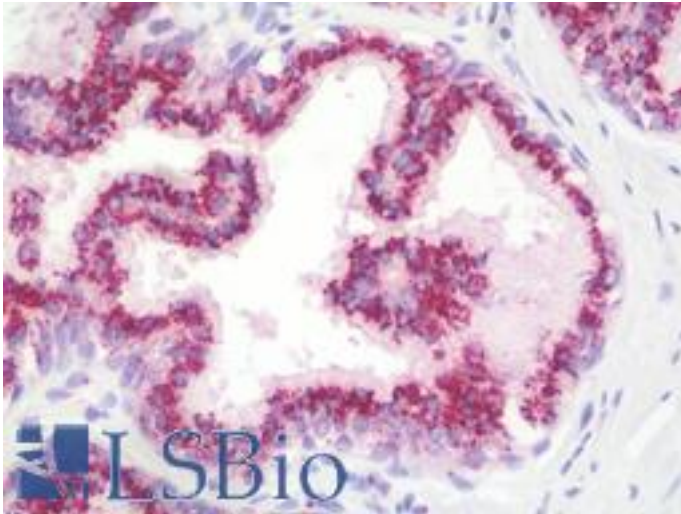


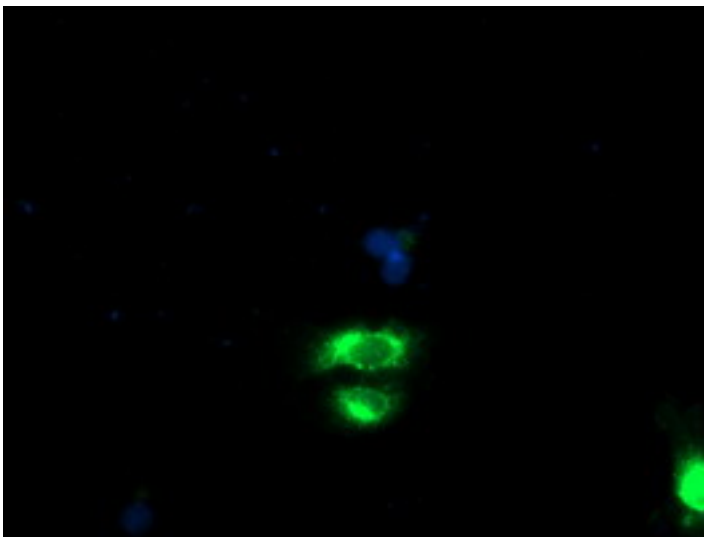
GOLM1 / GP73 / GOLPH2 Mouse anti-Human Monoclonal (6C9) Antibody - LS-B9814 - LSBio	
CatalogID:	LS-B9814
Validation:	This antibody replaces catalog number LS-C173646. It has been validated for use in the following assays: IHC-P.
Target:	golgi membrane protein 1 (GOLM1)
Synonyms:	GOLM1 Antibody, BA379P1.3 Antibody, Golgi membrane protein GP73 Antibody, Golgi phosphoprotein 2 Antibody, Golgi protein, 73-kD Antibody, gp73 Antibody, GOLPH2 Antibody, PSEC0257 Antibody, C9orf155 Antibody, Golgi membrane protein 1 Antibody
Host	GOLM1 antibody was produced in Mouse
Clonality:	Monoclonal
Isotype:	IgG1
Clone Name:	6C9
Immunogen Species:	GOLM1 / GP73 / GOLPH2 antibody was raised against Human
Antigen Type:	Recombinant protein
Immunogen:	GOLM1 / GP73 / GOLPH2 antibody was raised against full length human recombinant protein of human GOLM1(NP_808800) produced in HEK293T cell.
Specificity:	Human GP73 / GOLPH2
Reactivity:	Human, Monkey
Purification:	Protein A/G purified
Presentation:	PBS, pH 7.3, 1% BSA, 50% glycerol, 0.02% sodium azide
Recommended Storage:	Store at -20°C. Minimize freezing and thawing.
Uses:	IHC - Paraffin (10 µg/ml), Immunofluorescence (1:100), Western blot (1:500 - 1:2000) (Optimal dilution to be determined by the researcher)
Size:	50 µl
Concentration:	0.67 mg/ml

Immunohistochemistry Image:



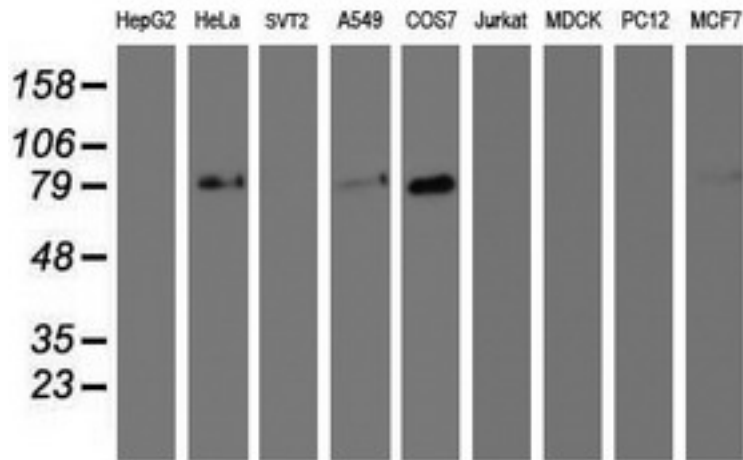
Human Prostate: Formalin-Fixed, Paraffin-Embedded (FFPE)

Immunofluorescence Image:



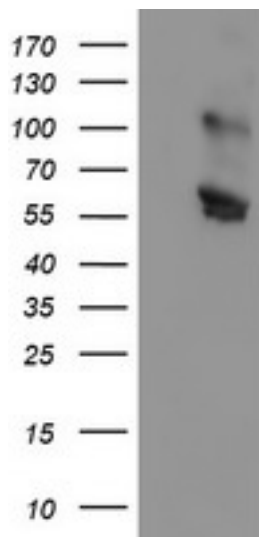
Anti-GOLM1 mouse monoclonal antibody immunofluorescent staining of COS7 cells transiently transfected by pCMV6-ENTRY GOLM1.

Western Blot Image:



Western blot of extracts (35 ug) from 9 different cell lines by using anti-GOLM1 monoclonal antibody.

Western Blot Image:



HEK293T cells were transfected with the pCMV6-ENTRY control (Left lane) or pCMV6-ENTRY GOLM1 (Right lane) cDNA for 48 hrs and lysed. Equivalent amounts of cell lysates (5 ug per lane) were separated by SDS-PAGE and immunoblotted with anti-GOLM1.

Requested From:

Japan

Laboratory Reagent For In Vitro Research Use Only

Not for resale without prior written consent from LifeSpan BioSciences, Inc.

Created on 9/24/2014

© 2014 LifeSpan BioSciences