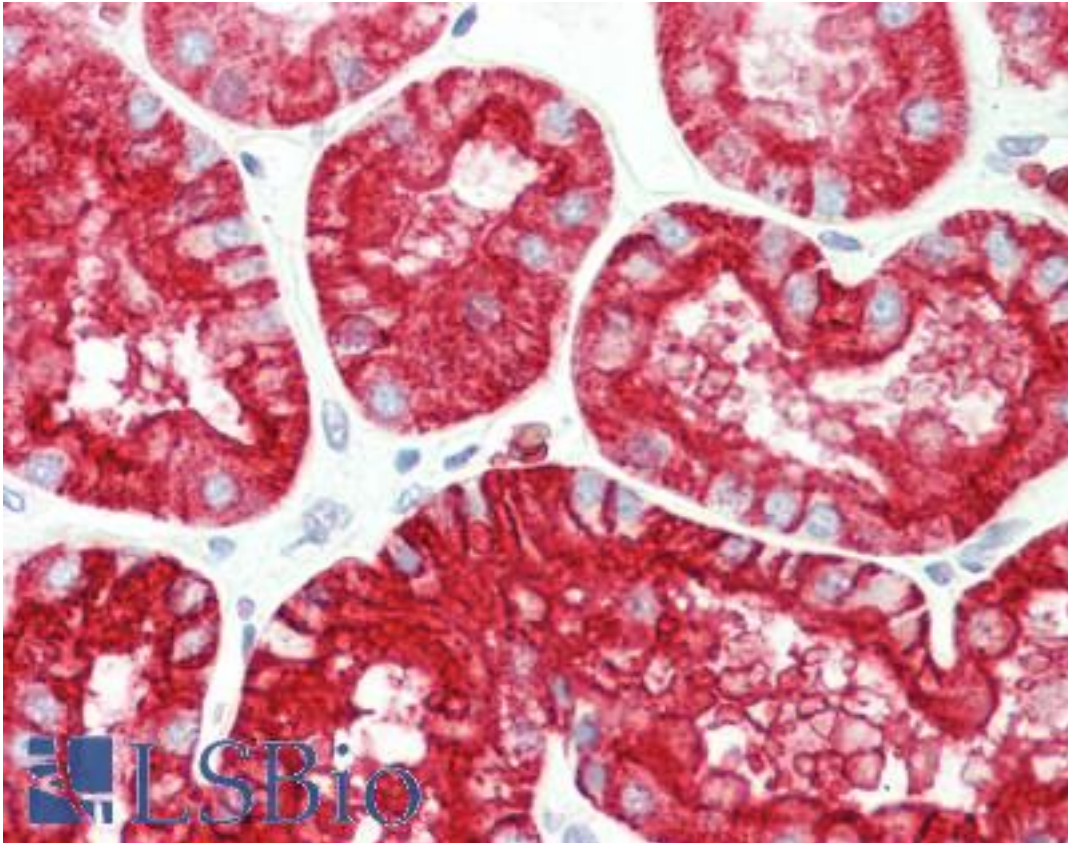


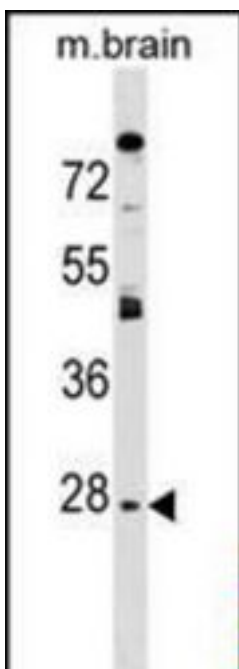
AQP1 / Aquaporin 1 Rabbit anti-Human Polyclonal (aa240-269) Antibody - LS-B9806 - LSBio	
CatalogID:	LS-B9806
Validation:	This antibody replaces catalog number LS-C159099. It has been validated for use in the following assays: IHC-P.
Target:	aquaporin 1 (Colton blood group) (AQP1)
Synonyms:	AQP1 Antibody, Aquaporin-1 Antibody, AQP-1 Antibody, AQP-CHIP Antibody, Aquaporin 1 Antibody, Aquaporin-CHIP Antibody, CHIP28 Antibody, Colton blood group Antibody, Urine water channel Antibody, CO Antibody
Family / Subfamily:	Transporter / Aquaporin
Host	AQP1 antibody was produced in Rabbit
Clonality:	Polyclonal
Immunogen Species:	AQP1 / Aquaporin 1 antibody was raised against Human
Antigen Type:	Synthetic peptide
Immunogen:	AQP1 / Aquaporin 1 antibody was raised against kLH-conjugated synthetic peptide from C-terminal region of human AQP1.
Specificity:	Human AQP1 / Aquaporin 1
Epitope:	aa240-269
Reactivity:	Human, Mouse
Purification:	Immunoaffinity purified
Presentation:	PBS, 0.09% sodium azide
Recommended Storage:	Maintain refrigerated at 2-8°C for up to 6 months. For long term storage store at -20°C.
Uses:	IHC - Paraffin (1:100), Western blot (1:1000) (Optimal dilution to be determined by the researcher)
Size:	200 µl

Immunohistochemistry Image:



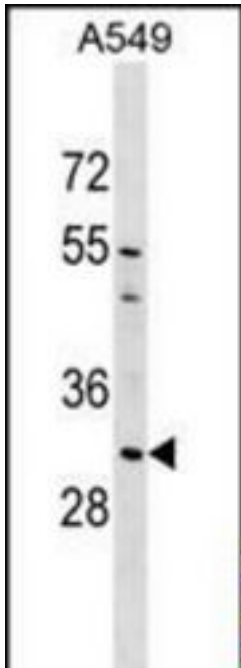
Human Kidney: Formalin-Fixed, Paraffin-Embedded (FFPE)

Western Blot Image:



AQP1 Antibody (C-term) Western blot of mouse brain tissue lysates (35 ug/lane). This demonstrates the AQP1 antibody detected the AQP1 protein (arrow).

Western Blot Image:



AQP1 Antibody (C-term) Western blot of A549 cell line lysates (35 ug/lane). This demonstrates the AQP1 antibody detected the AQP1 protein (arrow).

Requested From:

Japan

Laboratory Reagent For In Vitro Research Use Only

Not for resale without prior written consent from LifeSpan BioSciences, Inc.

Created on 9/24/2014

© 2014 LifeSpan BioSciences