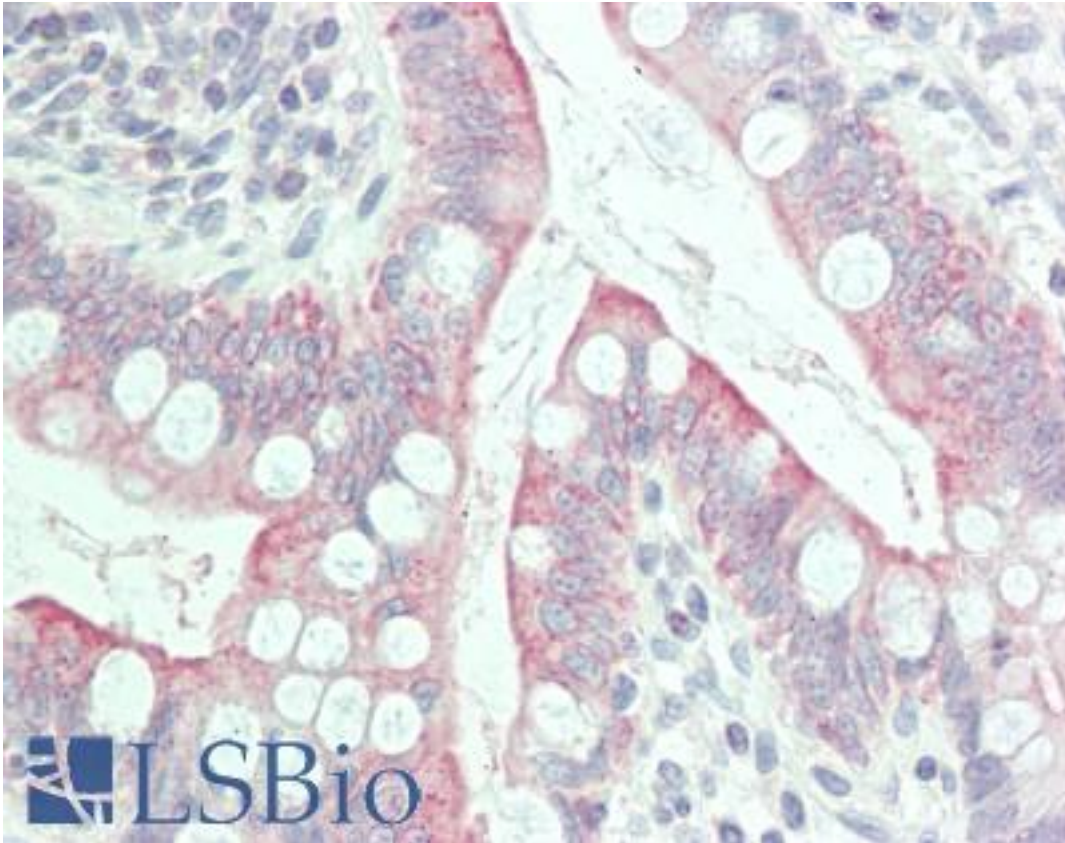


GPR31 Rabbit anti-Human Polyclonal (N-Terminus) Antibody - LS-B9792 - LSBio

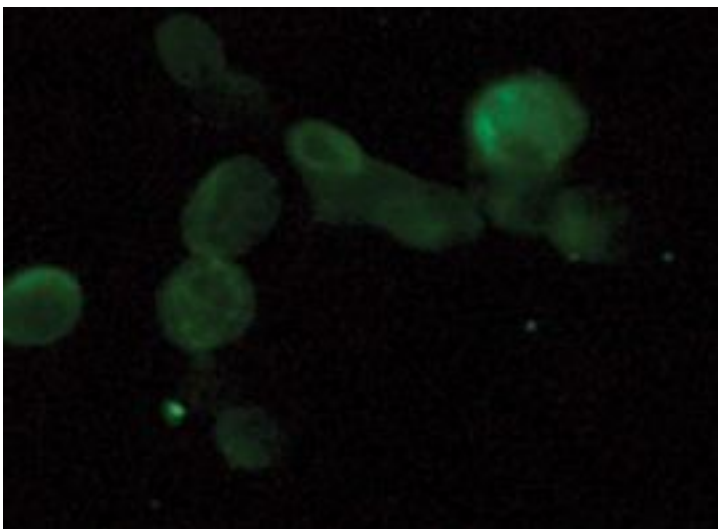
CatalogID:	LS-B9792
Validation:	This antibody replaces catalog number LS-C204270. It has been validated for use in the following assays: IHC-P.
Target:	G protein-coupled receptor 31 (GPR31)
Synonyms:	GPR31 Antibody, 12-(S)-HETE acid receptor Antibody, 12-(S)-HETE receptor Antibody, 12-HETER Antibody, G-protein coupled receptor 31 Antibody, HETER Antibody, HETER1 Antibody, TCP10C Antibody, G protein-coupled receptor 31 Antibody
Family / Subfamily:	GPCR / Orphan-A
Host	GPR31 antibody was produced in Rabbit
Clonality:	Polyclonal
Isotype:	IgG
Immunogen Species:	GPR31 antibody was raised against Human
Immunogen:	GPR31 antibody was raised against synthetic peptide from N-terminus of human GPR31.
Specificity:	Human GPR31
Epitope:	N-Terminus
Reactivity:	Human
Purification:	Affinity purified
Reconstitution:	Reconstitute with 500 ul deionized water
Presentation:	Lyophilized from TBS, pH 7.4.
Recommended Storage:	Stable for 1 month if stored at 4°C, 6 months if stored at -20°C (reconstituted) and 12 months at -20°C (as supplied). Avoid freeze/thaw cycles.
Uses:	IHC - Paraffin (1:100 - 1:11), Immunofluorescence (1:100), Flow Cytometry (1:200), ELISA (1:500) (Optimal dilution to be determined by the researcher)
Size:	1 ea

Immunohistochemistry Image:



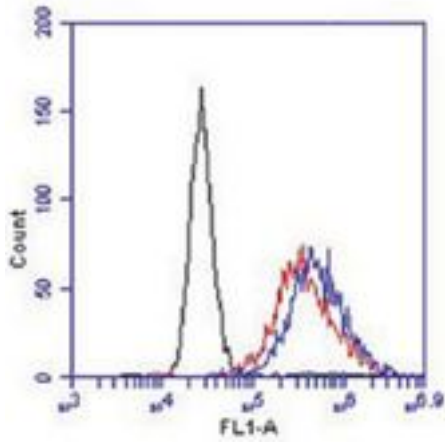
Human Small Intestine: Formalin-Fixed, Paraffin-Embedded (FFPE)

Immunofluorescence Image:



Immunofluorescent staining of PC3 cells with GPR31 antibody (1:100).

Flow Cytometry Image:



Flow cytometry of PC3 cells with GPR31 antibody. Red: 1:200 dilution, Blue: 1:100 dilution, Black: Negative control.

Requested From:

Japan

Laboratory Reagent For In Vitro Research Use Only

Not for resale without prior written consent from LifeSpan BioSciences, Inc.

Created on 9/24/2014

© 2014 LifeSpan BioSciences