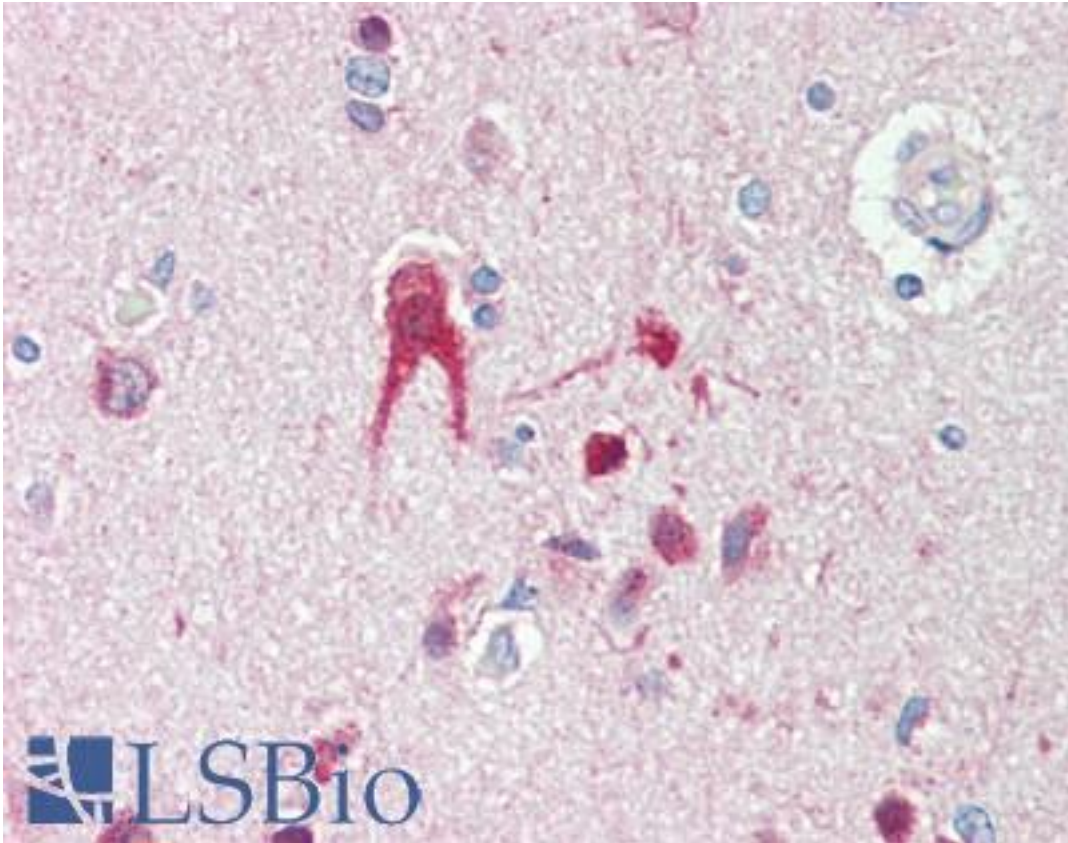


TLR2 Rabbit anti-Human Polyclonal (N-Terminus) Antibody - LS-B9791 - LSBio

<b>CatalogID:</b>	LS-B9791
<b>Validation:</b>	This antibody replaces catalog number LS-C90544. It has been validated for use in the following assays: IHC-P.
<b>Target:</b>	toll-like receptor 2 (TLR2)
<b>Synonyms:</b>	TLR2 Antibody, CD282 antigen Antibody, CD282 Antibody, TIL4 Antibody, Toll-like receptor 2 Antibody
<b>Family / Subfamily:</b>	Toll-like Receptor / not assigned-Toll-like Receptor
<b>Host</b>	TLR2 antibody was produced in Rabbit
<b>Clonality:</b>	Polyclonal
<b>Isotype:</b>	IgG
<b>Immunogen Species:</b>	TLR2 antibody was raised against Human
<b>Antigen Type:</b>	Synthetic peptide
<b>Immunogen:</b>	TLR2 antibody was raised against a peptide corresponding to an 14 amino acid sequence from near the amino terminus of human CD282.
<b>Specificity:</b>	Recognizes human CD282, also known as TLR-2. Species cross-reactivity: mouse.
<b>Epitope:</b>	N-Terminus
<b>Reactivity:</b>	Human, Mouse
<b>Purification:</b>	Ion exchange chromatography
<b>Presentation:</b>	PBS, 0.02% sodium azide
<b>Recommended Storage:</b>	Long term: -20°C; Short term: +4°C. Avoid repeat freeze-thaw cycles.
<b>Usage Summary:</b>	Suitable for use in Western Blot and Immunohistochemistry. Western Blot: 1 ug/ml.
<b>Uses:</b>	IHC - Paraffin (5 µg/ml), Western blot (1 µg/ml) (Optimal dilution to be determined by the researcher)
<b>Size:</b>	50 µg
<b>Concentration:</b>	1 mg/ml

**Immunohistochemistry Image:**



Human Brain, Cortex: Formalin-Fixed, Paraffin-Embedded (FFPE)

**Requested From:**

Japan

Laboratory Reagent For In Vitro Research Use Only

Not for resale without prior written consent from LifeSpan BioSciences, Inc.

Created on 9/24/2014

© 2014 LifeSpan BioSciences