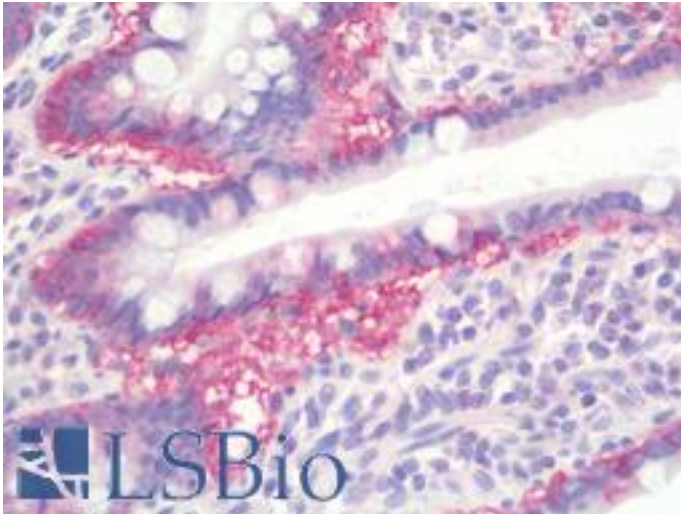


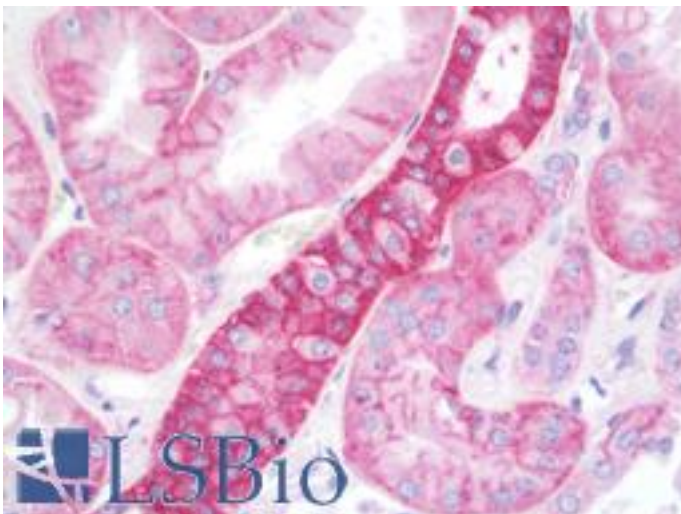
RAB1A / RAB1 Goat anti-Mouse Polyclonal (C-Terminus) Antibody - LS-B9788 - LSBio	
CatalogID:	LS-B9788
Validation:	This antibody replaces catalog number LS-C204230. It has been validated for use in the following assays: IHC-P.
Target:	RAB1A, member RAS oncogene family
Synonyms:	RAB1A Antibody, GTP binding protein Rab1a Antibody, YPT1-related protein Antibody, Rab GTPase YPT1 homolog Antibody, RAB1 Antibody, Ras-related protein Rab-1A Antibody, YPT1 Antibody
Family / Subfamily:	Ras GTPase superfamily IPR001806 / RAS oncogene
Host	RAB1A antibody was produced in Goat
Clonality:	Polyclonal
Isotype:	IgG
Immunogen Species:	RAB1A / RAB1 antibody was raised against Mouse
Antigen Type:	Recombinant protein
Immunogen:	RAB1A / RAB1 antibody was raised against purified recombinant peptides derived from within residues 110 aa to the C-terminus of mouse Rab1a and Rab1b produced in E. coli.
Specificity:	Detects total Rab1 protein by Western blot in the following human, rat and mouse whole cell lysates and transfected cells with GFP-Rab1a and GFP-Rab1b cds.
Epitope:	C-Terminus
Reactivity:	Mouse, Human, Monkey, Rat
Non-Reactivity:	Canine
Purification:	Immunoaffinity purified
Presentation:	PBS, 20% glycerol, 0.05% sodium azide.
Recommended Storage:	Store at 4°C short term. Aliquot and store at -20°C long term. Avoid freeze-thaw cycles.
Uses:	IHC - Paraffin (5 µg/ml), Immunofluorescence (1:100 - 1:250), Western blot (1:250 - 1:2000) (Optimal dilution to be determined by the researcher)
Size:	100 µl

Immunohistochemistry Image:



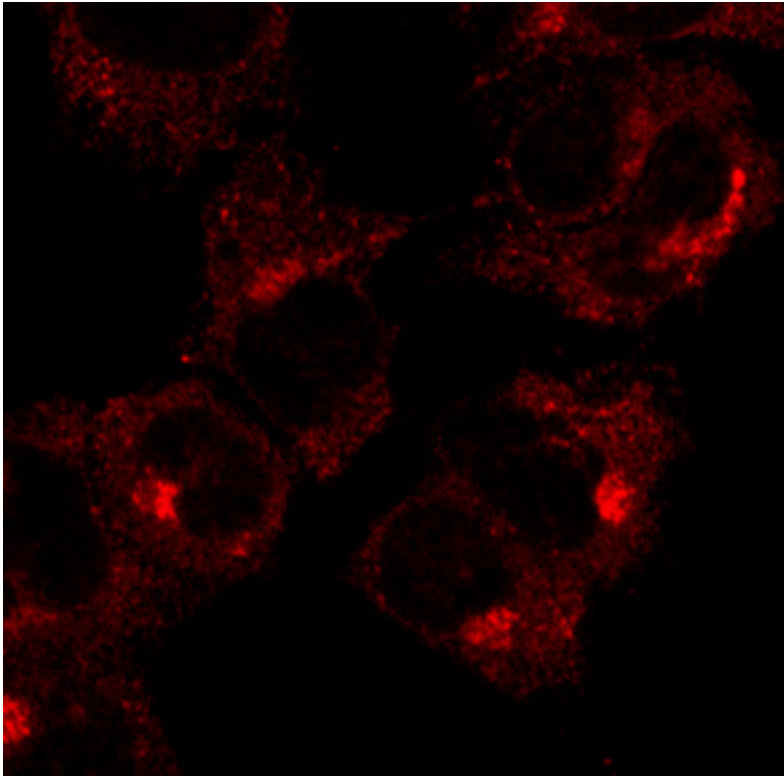
Human Small Intestine: Formalin-Fixed, Paraffin-Embedded (FFPE)

Immunohistochemistry Image:



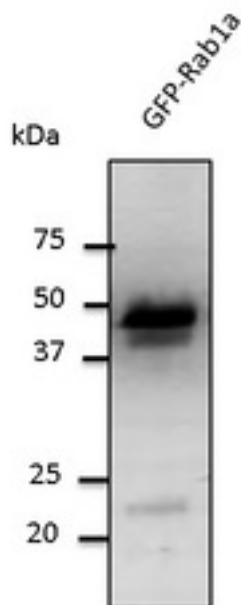
Human Kidney: Formalin-Fixed, Paraffin-Embedded (FFPE)

Immunofluorescence Image:



Immunofluorescence - anti-Rab1 antibody in COS-7 cells at 1:50 dilution. Cells were fixed with 4% of PFA.

Western Blot Image:



Western blot. Anti-Rab1 antibody at 1:1000 dilution. 293HEK transfected lysate at 50 ug per lane. Rabbit polyclonal to goat IgG (HRP) at 1:10000 dilution.

Requested From:

Japan

Laboratory Reagent For In Vitro Research Use Only

Not for resale without prior written consent from LifeSpan BioSciences, Inc.

Created on 9/24/2014

© 2014 LifeSpan BioSciences