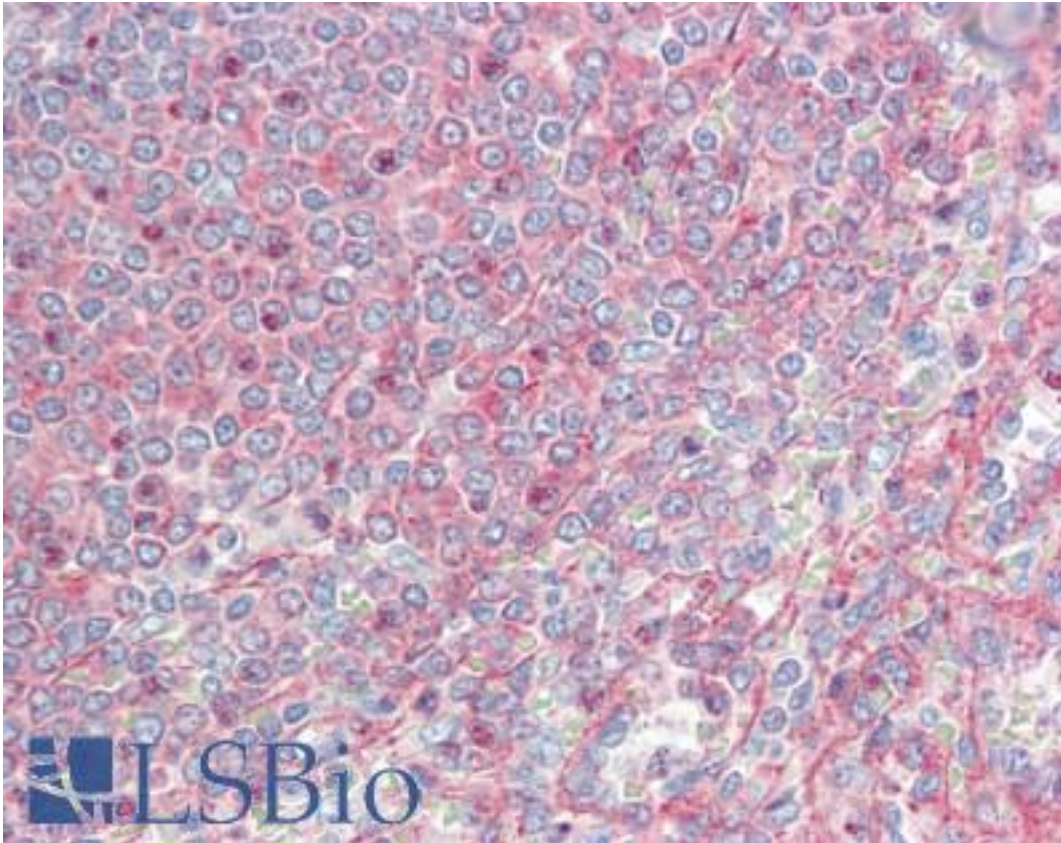


KIAA0802 Rabbit anti-Human Polyclonal (aa13-202) Antibody - LS-B9786 - LSBio

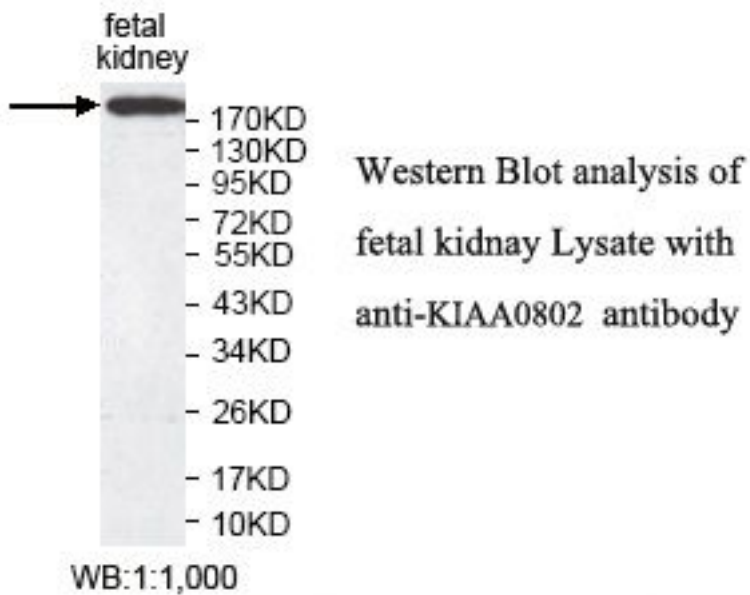
<b>CatalogID:</b>	LS-B9786
<b>Validation:</b>	This antibody replaces catalog number LS-C178976. It has been validated for use in the following assays: IHC-P.
<b>Target:</b>	SOGA family member 2 (SOGA2)
<b>Synonyms:</b>	SOGA2 Antibody, CCDC165 Antibody, Protein SOGA2 Antibody, SOGA family member 2 Antibody, KIAA0802 Antibody
<b>Host</b>	SOGA2 antibody was produced in Rabbit
<b>Clonality:</b>	Polyclonal
<b>Immunogen Species:</b>	KIAA0802 antibody was raised against Human
<b>Antigen Type:</b>	Recombinant protein
<b>Immunogen:</b>	KIAA0802 antibody was raised against a recombinant human KIAA0802 protein 13-202aa (BC040542).
<b>Specificity:</b>	Human KIAA0802.
<b>Epitope:</b>	aa13-202
<b>Reactivity:</b>	Human
<b>Purification:</b>	Affinity purified
<b>Presentation:</b>	PBS, pH 7.4, 0.02% sodium azide
<b>Recommended Storage:</b>	Store at -20°C for up to one year.
<b>Uses:</b>	IHC - Paraffin (10 µg/ml), Western blot (1:1000 - 1:2000), ELISA (1:20000 - 1:80000) (Optimal dilution to be determined by the researcher)
<b>Size:</b>	50 µl
<b>Concentration:</b>	1 mg/ml

**Immunohistochemistry Image:**



Human Spleen: Formalin-Fixed, Paraffin-Embedded (FFPE)

**Western Blot Image:**



Requested From:

Japan

Laboratory Reagent For In Vitro Research Use Only

Not for resale without prior written consent from LifeSpan BioSciences, Inc.

Created on 9/24/2014

© 2014 LifeSpan BioSciences