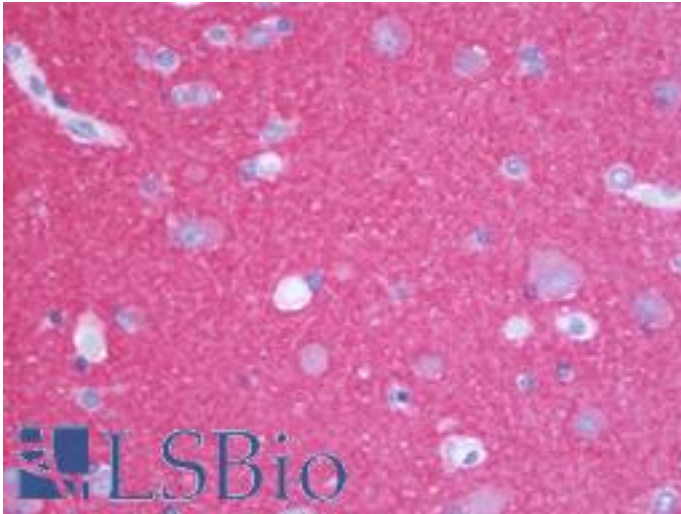


Rab3 Goat anti-Mouse Polyclonal (C-Terminus) Antibody - LS-B9785 - LSBio

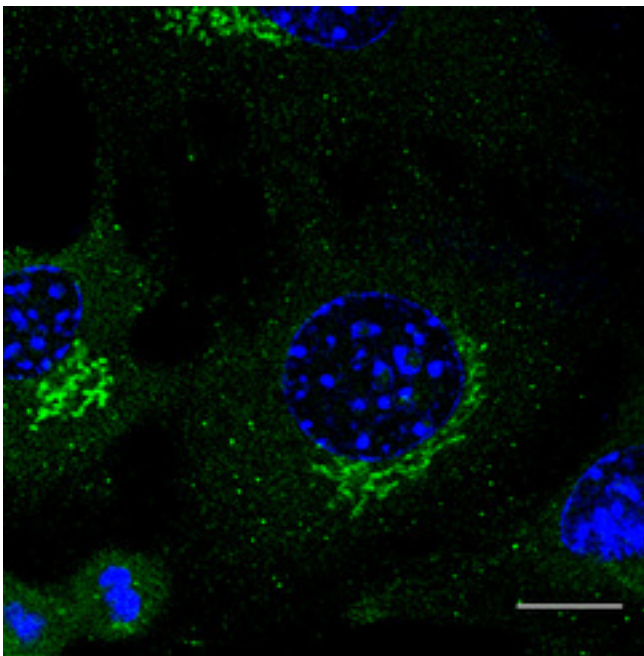
CatalogID:	LS-B9785
Validation:	This antibody replaces catalog number LS-C204232. It has been validated for use in the following assays: IHC-P.
Target:	Rab3
Host	Rab3 antibody was produced in Goat
Clonality:	Polyclonal
Isotype:	IgG
Immunogen Species:	Rab3 antibody was raised against Mouse
Antigen Type:	Recombinant protein
Immunogen:	Rab3 antibody was raised against purified recombinant peptides derived from within residues 110 aa to the C-terminus of mouse Rab3a produced in E. coli.
Specificity:	Detects total Rab3 protein in the following human, rat and mouse whole cell lysates and transfected cells with GFP-Rab3a, GFP-Rab3b and GFP-Rab3c cds by Western blot.
Epitope:	C-Terminus
Reactivity:	Mouse, Human, Rat
Predicted Reactivity:	Monkey, Canine
Purification:	Immunoaffinity purified
Presentation:	PBS, 20% glycerol, 0.05% sodium azide.
Recommended Storage:	Store at 4°C short term. Aliquot and store at -20°C long term. Avoid freeze-thaw cycles.
Uses:	IHC - Paraffin (5 µg/ml), Immunofluorescence (1:50 - 1:250), Western blot (1:250 - 1:1000) (Optimal dilution to be determined by the researcher)
Size:	100 µl

Immunohistochemistry Image:



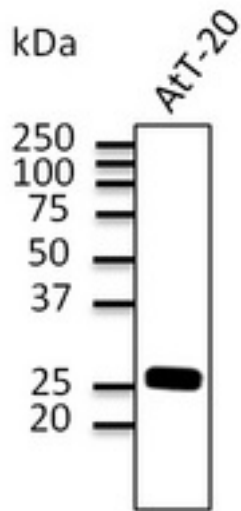
Human Brain, Cortex: Formalin-Fixed, Paraffin-Embedded (FFPE)

Immunofluorescence Image:



Immunofluorescence - anti-Rab3 antibody in B6 cells at 1:50 dilution. Cells were fixed with methanol.

Western Blot Image:



Western blot. Anti-Rab3 antibody at 1:500 dilution. AtT-20 cell line lysates at 100 ug per lane. Rabbit polyclonal to goat IgG (HRP) at 1:10000 dilution.

Requested From:

Japan

Laboratory Reagent For In Vitro Research Use Only

Not for resale without prior written consent from LifeSpan BioSciences, Inc.

Created on 9/24/2014

© 2014 LifeSpan BioSciences