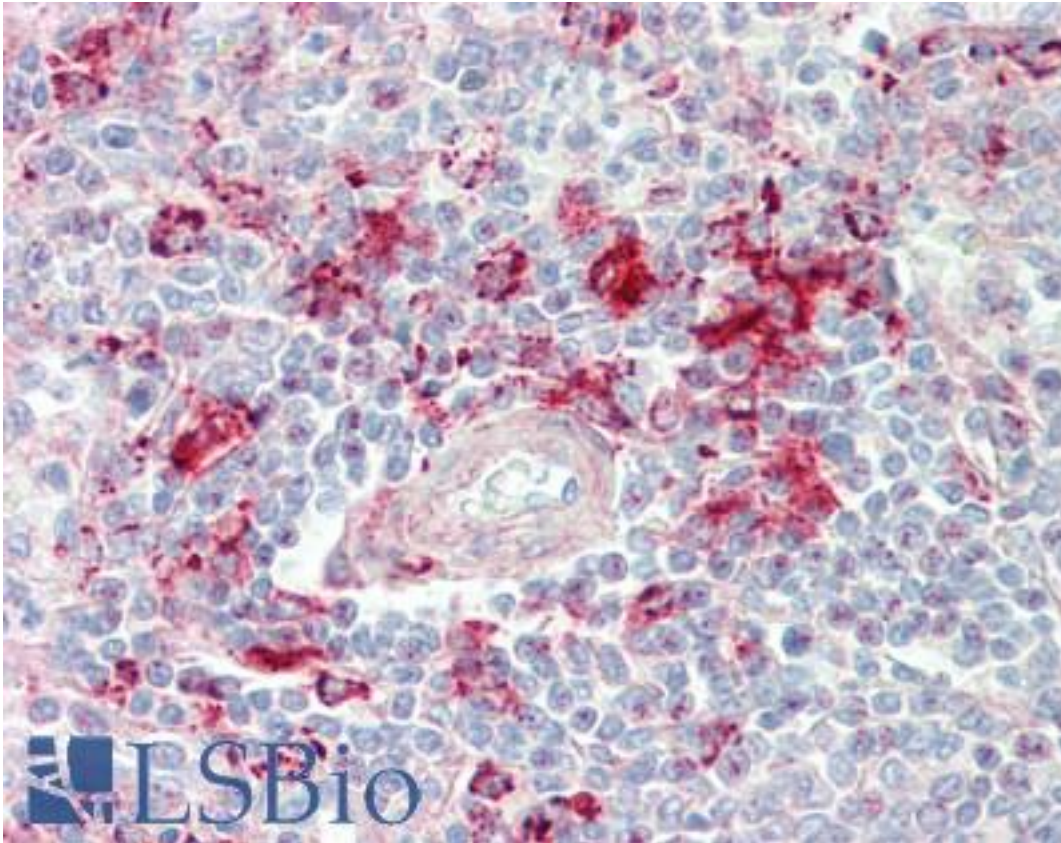


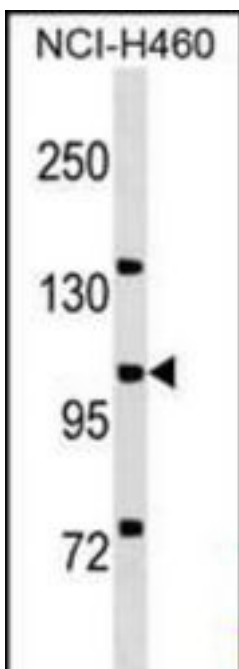
MCF2L / DBS Rabbit anti-Human Polyclonal (aa1048-1075) Antibody - LS-B9783 - LSBio	
<b>CatalogID:</b>	LS-B9783
<b>Validation:</b>	This antibody replaces catalog number LS-C158113. It has been validated for use in the following assays: IHC-P.
<b>Target:</b>	MCF.2 Cell Line Derived Transforming Sequence-like (MCF2L)
<b>Synonyms:</b>	MCF2L Antibody, ARHGEF14 Antibody, DBS Antibody, KIAA0362 Antibody, OST Antibody, DBLs big sister Antibody
<b>Host</b>	MCF2L antibody was produced in Rabbit
<b>Clonality:</b>	Polyclonal
<b>Immunogen Species:</b>	MCF2L / DBS antibody was raised against Human
<b>Immunogen:</b>	MCF2L / DBS antibody was raised against KLH-conjugated synthetic selected from C-terminal region of human MCF2L.
<b>Specificity:</b>	Human MCF2L / DBS
<b>Epitope:</b>	aa1048-1075
<b>Reactivity:</b>	Human
<b>Purification:</b>	Immunoaffinity purified
<b>Presentation:</b>	PBS, 0.09% sodium azide
<b>Recommended Storage:</b>	Maintain refrigerated at 2-8°C for up to 6 months. For long term storage store at -20°C.
<b>Uses:</b>	IHC - Paraffin (1:100), Western blot (1:1000) (Optimal dilution to be determined by the researcher)
<b>Size:</b>	200 µl

**Immunohistochemistry Image:**



Human Spleen: Formalin-Fixed, Paraffin-Embedded (FFPE)

**Western Blot Image:**



MCF2L Antibody (C-term) Western blot of NCI-H460 cell line lysates (35 ug/lane). This demonstrates the MCF2L antibody detected the MCF2L protein (arrow).

<b>Requested From:</b>	Japan
Laboratory Reagent For In Vitro Research Use Only	
Not for resale without prior written consent from LifeSpan BioSciences, Inc.	
Created on 9/24/2014	
© 2014 LifeSpan BioSciences	