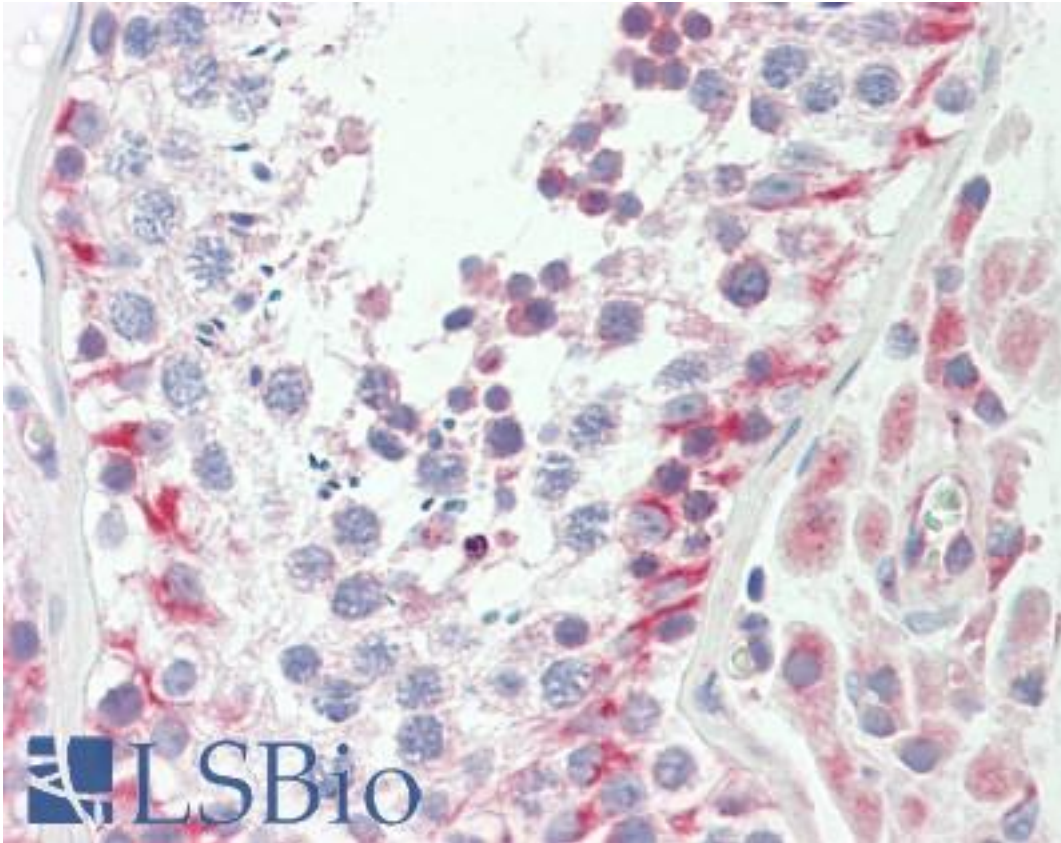


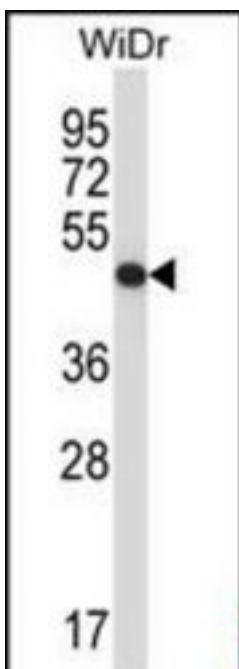
QCR2 / UQCRC2 Rabbit anti-Human Polyclonal (aa235-264) Antibody - LS-B9780 - LSBio	
CatalogID:	LS-B9780
Validation:	This antibody replaces catalog number LS-C160454. It has been validated for use in the following assays: IHC-P.
Target:	ubiquinol-cytochrome c reductase core protein II (UQCRC2)
Synonyms:	UQCRC2 Antibody, Core protein II Antibody, QCR2 Antibody, Complex III subunit 2 Antibody, UQCR2 Antibody
Family / Subfamily:	Protease / Metallopeptidase M16
Host	UQCRC2 antibody was produced in Rabbit
Clonality:	Polyclonal
Immunogen Species:	QCR2 / UQCRC2 antibody was raised against Human
Antigen Type:	Synthetic peptide
Immunogen:	QCR2 / UQCRC2 antibody was raised against kLH-conjugated synthetic peptide from internal region of human UQCRC2.
Specificity:	Human QCR2 / UQCRC2
Epitope:	aa235-264
Reactivity:	Human
Purification:	Immunoaffinity purified
Presentation:	PBS, 0.09% sodium azide
Recommended Storage:	Maintain refrigerated at 2-8°C for up to 6 months. For long term storage store at -20°C.
Uses:	IHC - Paraffin (1:50), Western blot (1:1000) (Optimal dilution to be determined by the researcher)
Size:	200 µl

Immunohistochemistry Image:



Human Testis: Formalin-Fixed, Paraffin-Embedded (FFPE)

Western Blot Image:



UQCRC2 Antibody (Center) Western blot of WiDr cell line lysates (35 ug/lane). This demonstrates the UQCRC2 antibody detected the UQCRC2 protein (arrow).

Requested From:	Japan
Laboratory Reagent For In Vitro Research Use Only	
Not for resale without prior written consent from LifeSpan BioSciences, Inc.	
Created on 9/24/2014	
© 2014 LifeSpan BioSciences	