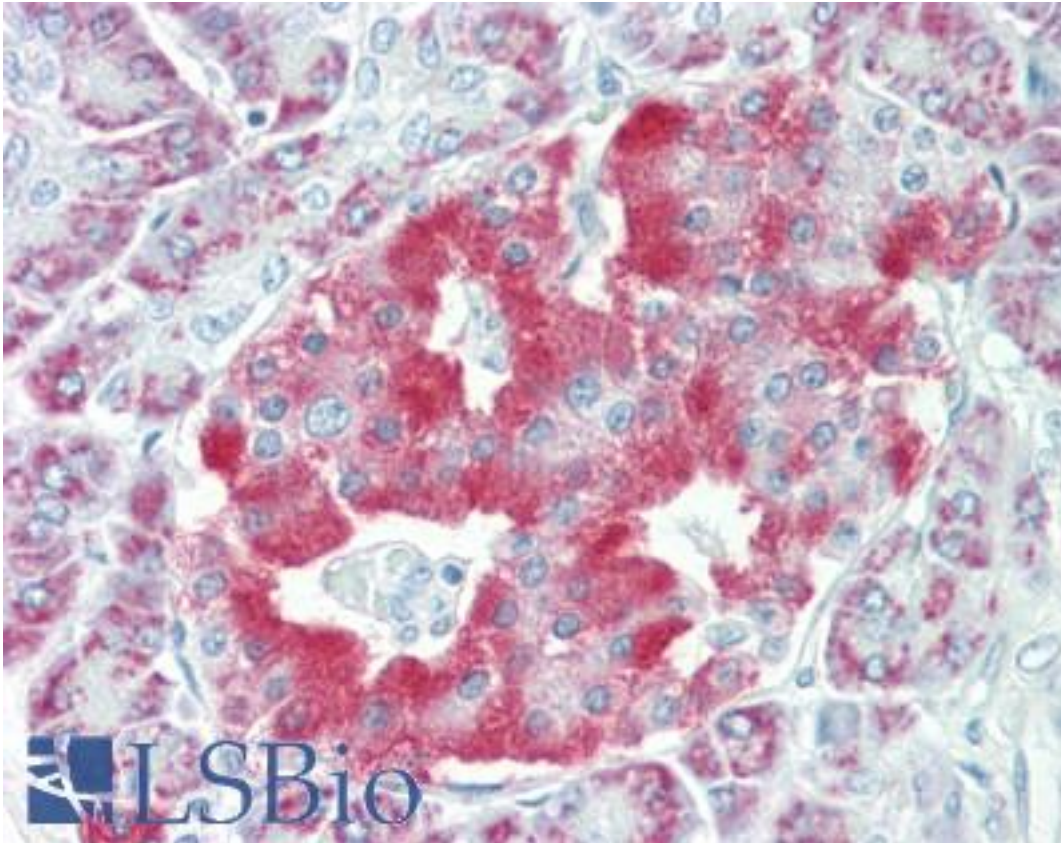


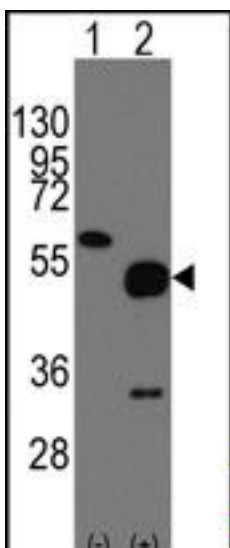
NARP / NPTX2 Rabbit anti-Human Polyclonal (C-Terminus) Antibody - LS-B9779 - LSBio	
CatalogID:	LS-B9779
Validation:	This antibody replaces catalog number LS-C98576. It has been validated for use in the following assays: IHC-P.
Target:	neuronal pentraxin II (NPTX2)
Synonyms:	NPTX2 Antibody, Apexin Antibody, Neuronal pentraxin-2 Antibody, NARP Antibody, Neuronal pentraxin II Antibody, NP-II Antibody, NP2 Antibody
Host	NPTX2 antibody was produced in Rabbit
Clonality:	Polyclonal
Immunogen Species:	NARP / NPTX2 antibody was raised against Human
Antigen Type:	Synthetic peptide
Immunogen:	NARP / NPTX2 antibody was raised against kLH conjugated synthetic peptide selected from the C-terminal region of human NPTX2.
Epitope:	C-Terminus
Reactivity:	Human
Purification:	Protein G purified
Presentation:	PBS, 0.09% sodium azide
Recommended Storage:	Maintain refrigerated at 2-8°C for up to 6 months. For long term storage store at -20°C.
Uses:	IHC - Paraffin (1:50), Western blot (1:1000) (Optimal dilution to be determined by the researcher)
Size:	200 µl

Immunohistochemistry Image:



Human Pancreas: Formalin-Fixed, Paraffin-Embedded (FFPE)

Western Blot Image:



Western blot of NRP(Nptx2) (arrow) using rabbit polyclonal NRP(Nptx2) Antibody (C-term). 293 cell lysates (2 ug/lane) either nontransfected (Lane 1) or transiently transfected with the NRP(Nptx2) gene (Lane 2).

Requested From:

Japan

Laboratory Reagent For In Vitro Research Use Only

Not for resale without prior written consent from LifeSpan BioSciences, Inc.

Created on 9/24/2014

© 2014 LifeSpan BioSciences