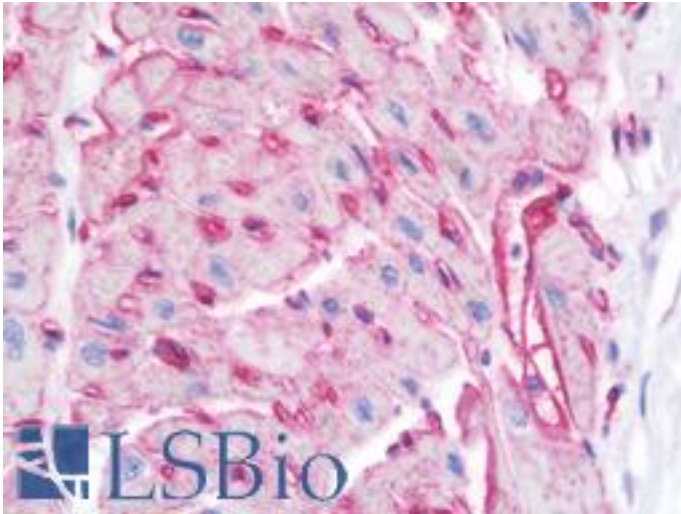


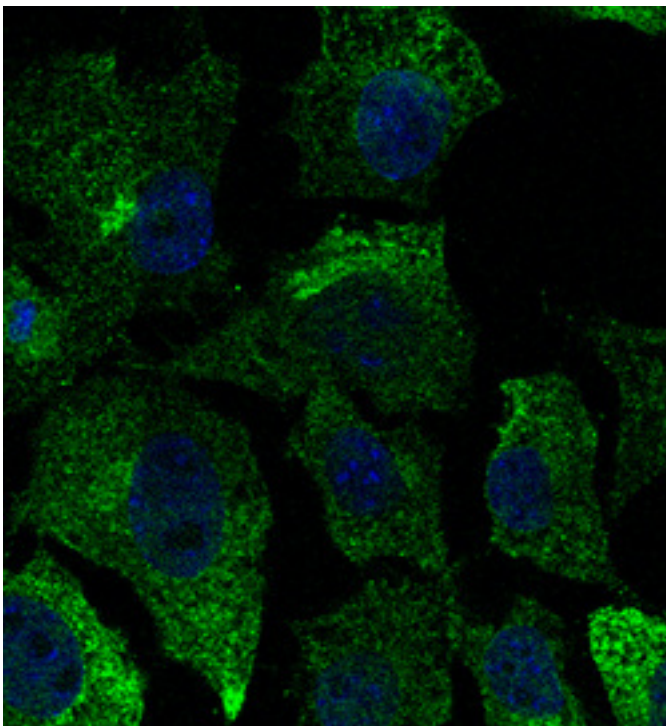
CAV1 / Caveolin 1 Goat anti-Human Polyclonal (N-Terminus) Antibody - LS-B9776 - LSBio	
<b>CatalogID:</b>	LS-B9776
<b>Validation:</b>	This antibody replaces catalog number LS-C204218. It has been validated for use in the following assays: IHC-P.
<b>Target:</b>	caveolin 1, caveolae protein, 22kDa (CAV1)
<b>Synonyms:</b>	CAV1 Antibody, Caveolin-1 Antibody, CGL3 Antibody, CAV Antibody, MSTP085 Antibody, VIP21 Antibody, BSCL3 Antibody
<b>Host</b>	CAV1 antibody was produced in Goat
<b>Clonality:</b>	Polyclonal
<b>Isotype:</b>	IgG
<b>Immunogen Species:</b>	CAV1 / Caveolin 1 antibody was raised against Human
<b>Antigen Type:</b>	Recombinant protein
<b>Immunogen:</b>	CAV1 / Caveolin 1 antibody was raised against purified recombinant peptide derived from within residues 100 aa to the N-terminus of human CAV1 produced in E. coli.
<b>Specificity:</b>	Detects a band of approximately 25 kDa by Western blot in the following cell lysate: hCat, MDCK and 3T3.
<b>Epitope:</b>	N-Terminus
<b>Reactivity:</b>	Human, Mouse, Dog
<b>Predicted Reactivity:</b>	Monkey, Canine
<b>Purification:</b>	Immunoaffinity purified
<b>Presentation:</b>	PBS, 20% glycerol, 0.05% sodium azide.
<b>Recommended Storage:</b>	Store at 4°C short term. Aliquot and store at -20°C long term. Avoid freeze-thaw cycles.
<b>Uses:</b>	IHC - Paraffin (5 µg/ml), Immunofluorescence (1:25 - 1:250), Western blot (1:500 - 1:2000) (Optimal dilution to be determined by the researcher)
<b>Size:</b>	100 µl

**Immunohistochemistry Image:**



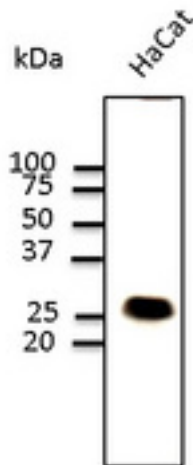
Human Heart: Formalin-Fixed, Paraffin-Embedded (FFPE)

**Immunofluorescence Image:**



Immunofluorescence - anti-CAV1 antibody - Caveolae Marker in Hepa1-6 cells at 1:50 dilution. Cells were fixed with 4% of PFA.

**Western Blot Image:**



Western blot. Anti-CAV1 antibody at 1:1000 dilution. 100 ug lysate per lane. Rabbit polyclonal to goat IgG (HRP) at 1:10000 dilution.

**Requested From:**

Japan

Laboratory Reagent For In Vitro Research Use Only

Not for resale without prior written consent from LifeSpan BioSciences, Inc.

Created on 9/24/2014

© 2014 LifeSpan BioSciences