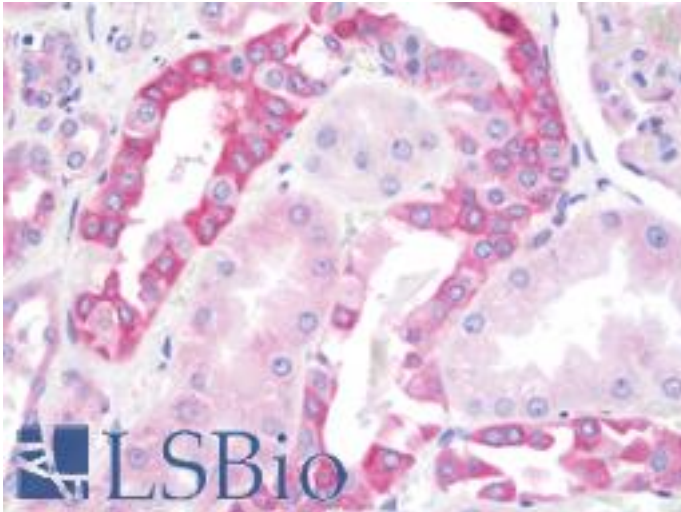


TJP1 / ZO-1 Goat anti-Human Polyclonal (C-Terminus) Antibody - LS-B9774 - LSBio

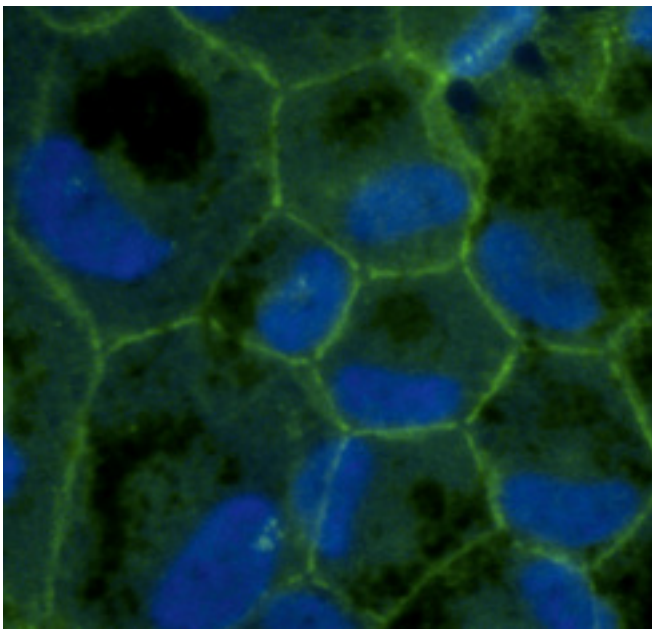
CatalogID:	LS-B9774
Validation:	This antibody replaces catalog number LS-C204268. It has been validated for use in the following assays: IHC-P.
Target:	tight junction protein 1 (TJP1)
Synonyms:	TJP1 Antibody, ZO-1 Antibody, Zona occludens protein 1 Antibody, Zona occludens 1 Antibody, Zonula occludens protein 1 Antibody, Tight junction protein 1 Antibody, ZO1 Antibody, Tight junction protein ZO-1 Antibody, Zonula occludens 1 protein Antibody
Family / Subfamily:	Occludin / Not assigned-Occludin
Host	TJP1 antibody was produced in Goat
Clonality:	Polyclonal
Isotype:	IgG
Immunogen Species:	TJP1 / ZO-1 antibody was raised against Human
Antigen Type:	Recombinant protein
Immunogen:	TJP1 / ZO-1 antibody was raised against purified recombinant peptide derived from within residues 1580 aa to the C-terminus of human ZO-1 produced in E. coli.
Specificity:	Detects endogenous levels of total ZO-1 by Western blot in whole cell and tissue lysates.
Epitope:	C-Terminus
Reactivity:	Human, Monkey, Mouse, Rat, Dog
Purification:	Immunoaffinity purified
Presentation:	PBS, 20% glycerol, 0.05% sodium azide.
Recommended Storage:	Store at 4°C short term. Aliquot and store at -20°C long term. Avoid freeze-thaw cycles.
Uses:	IHC - Paraffin (10 µg/ml), Immunofluorescence (1:50 - 1:250), Western blot (1:500 - 1:2000) (Optimal dilution to be determined by the researcher)
Size:	100 µl
Concentration:	3 mg/ml

Immunohistochemistry Image:



Human Kidney: Formalin-Fixed, Paraffin-Embedded (FFPE)

Immunofluorescence Image:



Immunofluorescence of primary RPE cells with ZO-1 antibody at 1:100 dilution.

Requested From:

Japan

Laboratory Reagent For In Vitro Research Use Only

Not for resale without prior written consent from LifeSpan BioSciences, Inc.

Created on 9/24/2014

© 2014 LifeSpan BioSciences