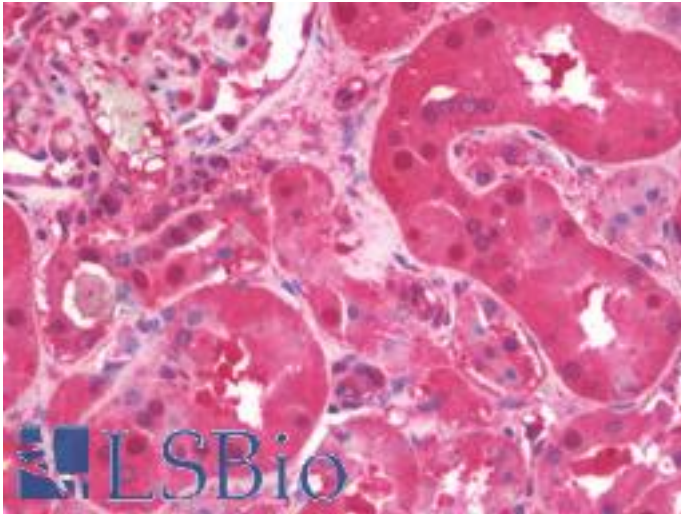


GAPDH Goat anti-Human Polyclonal (C-Terminus) Antibody - LS-B9773 - LSBio

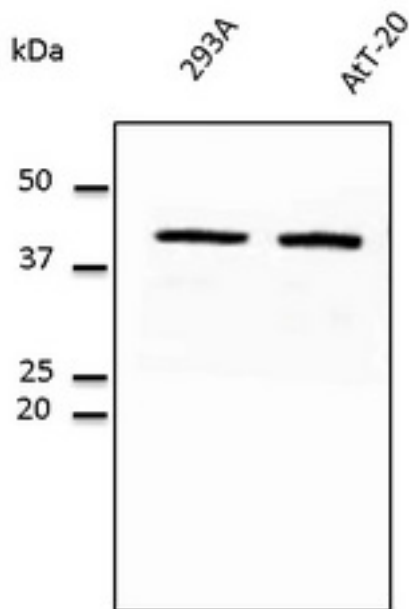
CatalogID:	LS-B9773
Validation:	This antibody replaces catalog number LS-C204214. It has been validated for use in the following assays: IHC-P.
Target:	glyceraldehyde-3-phosphate dehydrogenase (GAPDH)
Synonyms:	GAPDH Antibody, A1 40 kd subunit Antibody, Activator 1 40 kd subunit Antibody, G3PD Antibody, GAPD Antibody, G3pdh Antibody, Rfc40 Antibody, Rf-c 40 kd subunit Antibody
Host	GAPDH antibody was produced in Goat
Clonality:	Polyclonal
Isotype:	IgG
Immunogen Species:	GAPDH antibody was raised against Human
Antigen Type:	Recombinant protein
Immunogen:	GAPDH antibody was raised against purified recombinant peptide derived from within residues 240 aa to the C-terminus of human GAPDH produced in E. coli.
Specificity:	Detects a band of 37 kDa by Western blot in the following human (293A, HMEC-1, U-118, HaCat), rat (TR-iBRB), mouse (AtT-20, Hepa), canine (D17) and monkey (COS-7) whole cell lysates.
Epitope:	C-Terminus
Reactivity:	Human, Monkey, Mouse, Rat, Dog
Purification:	Immunoaffinity purified
Presentation:	PBS, 20% glycerol, 0.05% sodium azide.
Recommended Storage:	Store at 4°C short term. Aliquot and store at -20°C long term. Avoid freeze-thaw cycles.
Uses:	IHC - Paraffin (5 µg/ml), Western blot (1:500 - 1:2000) (Optimal dilution to be determined by the researcher)
Size:	100 µl

Immunohistochemistry Image:



Human Kidney: Formalin-Fixed, Paraffin-Embedded (FFPE)

Western Blot Image:



Western blot. Anti-GAPDH antibody at 1:500 dilution. Lysates at 50 ug per lane. Rabbit polyclonal to goat IgG (HRP) at 1:10000 dilution.

Requested From:

Japan

Laboratory Reagent For In Vitro Research Use Only

Not for resale without prior written consent from LifeSpan BioSciences, Inc.

Created on 9/24/2014

© 2014 LifeSpan BioSciences