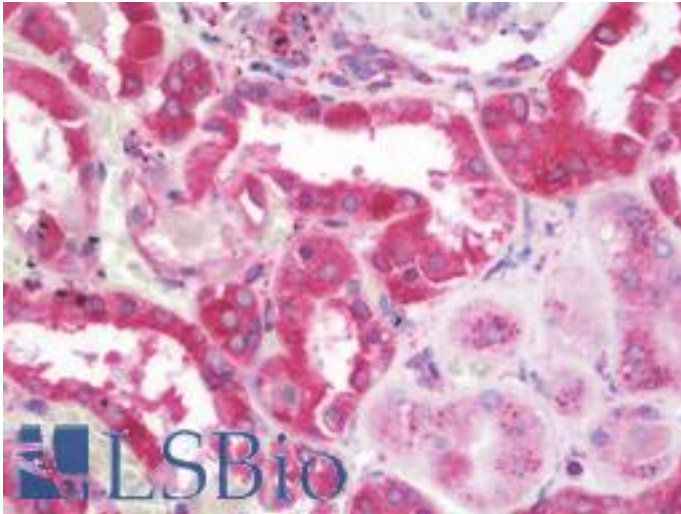


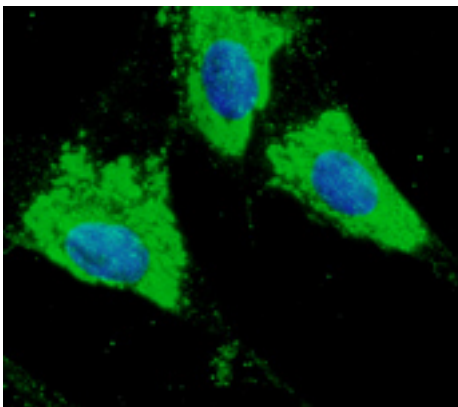
PDIA3 / ERp57 Goat anti-Human Polyclonal (C-Terminus) Antibody - LS-B9768 - LSBio	
CatalogID:	LS-B9768
Validation:	This antibody replaces catalog number LS-C204221. It has been validated for use in the following assays: IHC-P.
Target:	protein disulfide isomerase family A, member 3 (PDIA3)
Synonyms:	PDIA3 Antibody, 58 kDa microsomal protein Antibody, ER protein 57 Antibody, ERp60 Antibody, ERp61 Antibody, Disulfide isomerase ER-60 Antibody, Endoplasmic reticulum P58 Antibody, GRP58 Antibody, HsT17083 Antibody, p58 Antibody, Phospholipase C-alpha Antibody, PI-PLC Antibody, ER protein 60 Antibody, ER60 Antibody, ERp57 Antibody, GRP57 Antibody, Protein disulfide-isomerase A3 Antibody
Host	PDIA3 antibody was produced in Goat
Clonality:	Polyclonal
Isotype:	IgG
Immunogen Species:	PDIA3 / ERp57 antibody was raised against Human
Antigen Type:	Recombinant protein
Immunogen:	PDIA3 / ERp57 antibody was raised against purified recombinant peptide derived from within residues 300 aa to the C-terminus of human ERP57 produced in E. coli.
Specificity:	Detects a band of 60 kDa by Western blot in the following canine, human, monkey, mouse, rat whole cell lysates.
Epitope:	C-Terminus
Reactivity:	Human, Monkey, Mouse, Rat, Dog
Purification:	Immunoaffinity purified
Presentation:	PBS, 20% glycerol, 0.05% sodium azide.
Recommended Storage:	Store at 4°C short term. Aliquot and store at -20°C long term. Avoid freeze-thaw cycles.
Uses:	IHC - Paraffin (5 µg/ml), Immunofluorescence (1:50 - 1:500), Western blot (1:500 - 1:2000) (Optimal dilution to be determined by the researcher)
Size:	100 µl
Concentration:	3 mg/ml

Immunohistochemistry Image:



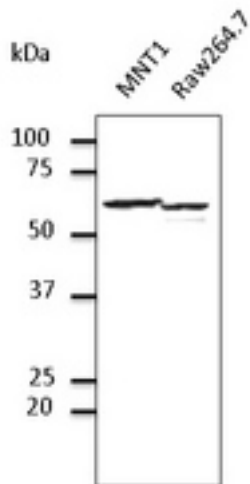
Human Kidney: Formalin-Fixed, Paraffin-Embedded (FFPE)

Immunofluorescence Image:



Immunofluorescence. Anti-ERP57 antibody in primary RPE cells at 1:100 dilution. Cells were fixed with 4% of PFA.

Western Blot Image:



Western blot. Endogenous ERP57- endoplasmic reticulum lumen marker detected with PDIA3 / ERp57 antibody at 1:500 dilution. Lysates at 100 ug per lane and rabbit polyclonal to goat IgG (HRP) at 1:10000 dilution.

Requested From:

Japan

Laboratory Reagent For In Vitro Research Use Only

Not for resale without prior written consent from LifeSpan BioSciences, Inc.

Created on 9/24/2014

© 2014 LifeSpan BioSciences