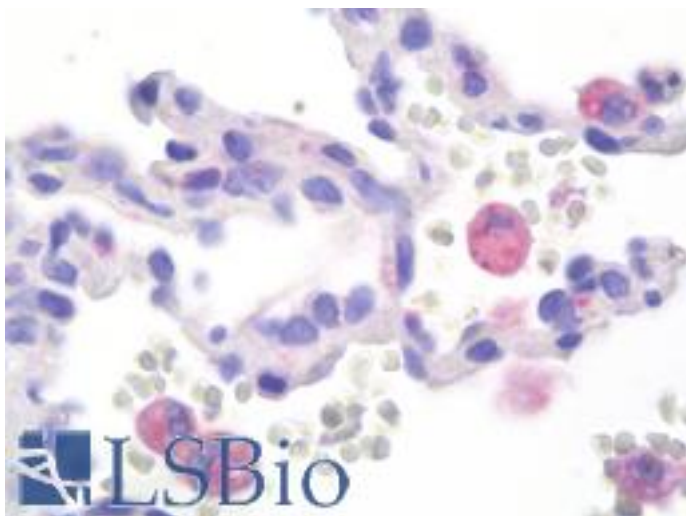


HEXA Mouse anti-Human Monoclonal (AT20F1) Antibody - LS-B9668 - LSBio

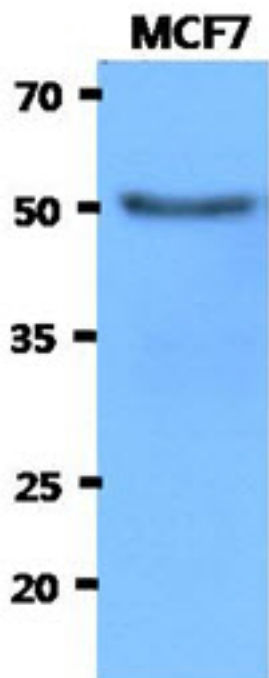
CatalogID:	LS-B9668
Validation:	This antibody replaces catalog number LS-C200842. It has been validated for use in the following assays: IHC-P.
Target:	hexosaminidase A (alpha polypeptide) (HEXA)
Synonyms:	HEXA Antibody, Hexosaminidase subunit A Antibody, TSD Antibody
Host	HEXA antibody was produced in Mouse
Clonality:	Monoclonal
Isotype:	IgG2a, λ
Clone Name:	AT20F1
Immunogen Species:	HEXA antibody was raised against Human
Antigen Type:	Recombinant protein
Immunogen:	HEXA antibody was raised against recombinant human HEXA (89-529aa) purified from E. coli.
Specificity:	Human HEXA
Reactivity:	Human
Purification:	Protein A purified
Presentation:	Supplied in PBS, pH 7.4, 10% glycerol, 0.02% sodium azide
Recommended Storage:	Can be stored at 4°C. For long term storage, aliquot and store at -20°C. Avoid repeated freezing and thawing cycles.
Uses:	IHC - Paraffin (10 μ g/ml), Western blot (1:3000), ELISA (Optimal dilution to be determined by the researcher)
Size:	50 μ l
Concentration:	1 mg/ml

Immunohistochemistry Image:



Human Lung: Formalin-Fixed, Paraffin-Embedded (FFPE)

Western Blot Image:



Western Blot: The cell lysates of MCF7 (40 ug) were resolved by SDS-PAGE, transferred to PVDF membrane and probed with anti-human HEXA antibody (1:3000). Proteins were visualized using a goat anti-mouse secondary antibody conjugated to HRP and an ECL detection system.

Requested From:

Japan

Laboratory Reagent For In Vitro Research Use Only

Not for resale without prior written consent from LifeSpan BioSciences, Inc.

Created on 9/24/2014

© 2014 LifeSpan BioSciences