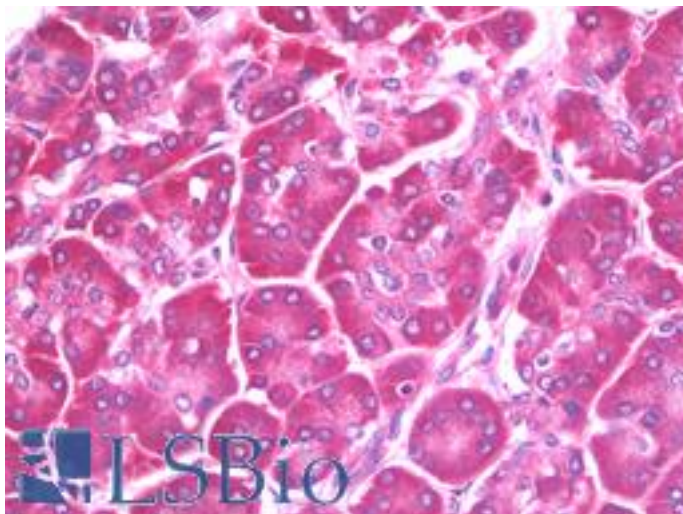


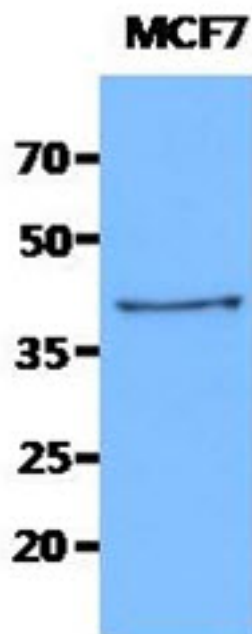
KRT19 / CK19 / Cytokeratin 19 Mouse anti-Human Monoclonal (AT13D10) Antibody - LS-B9665 - LSBio	
CatalogID:	LS-B9665
Validation:	This antibody replaces catalog number LS-C200838. It has been validated for use in the following assays: IHC-P.
Target:	keratin 19 (KRT19)
Synonyms:	KRT19 Antibody, CK19 Antibody, Cytokeratin 19 Antibody, Cytokeratin-19 Antibody, Keratin 19 Antibody, Keratin-19 Antibody, CK-19 Antibody, K19 Antibody, K1CS Antibody, Keratin, type I, 40-kd Antibody
Host	KRT19 antibody was produced in Mouse
Clonality:	Monoclonal
Isotype:	IgG2b,k
Clone Name:	AT13D10
Immunogen Species:	KRT19 / CK19 / Cytokeratin 19 antibody was raised against Human
Antigen Type:	Recombinant protein
Immunogen:	KRT19 / CK19 / Cytokeratin 19 antibody was raised against recombinant human KRT19 (1-400aa) purified from E. coli.
Specificity:	Human KRT19 / CK19 / Cytokeratin 19
Reactivity:	Human
Purification:	Protein A purified
Presentation:	Supplied in PBS, pH 7.4, 10% glycerol, 0.02% sodium azide
Recommended Storage:	Can be stored at 4°C. For long term storage, aliquot and store at -20°C. Avoid repeated freezing and thawing cycles.
Uses:	IHC - Paraffin (10 µg/ml), Western blot (1:1000), ELISA (Optimal dilution to be determined by the researcher)
Size:	50 µl
Concentration:	1 mg/ml

Immunohistochemistry Image:



Human Pancreas: Formalin-Fixed, Paraffin-Embedded (FFPE)

Western Blot Image:



Western Blot: The cell lysates of MCF7 (40 ug) were resolved by SDS-PAGE, transferred to PVDF membrane and probed with anti-human KRT19 antibody (1:1000). Proteins were visualized using a goat anti-mouse secondary antibody conjugated to HRP and an ECL detection system.

Requested From:

Japan

Laboratory Reagent For In Vitro Research Use Only

Not for resale without prior written consent from LifeSpan BioSciences, Inc.

Created on 9/24/2014

© 2014 LifeSpan BioSciences