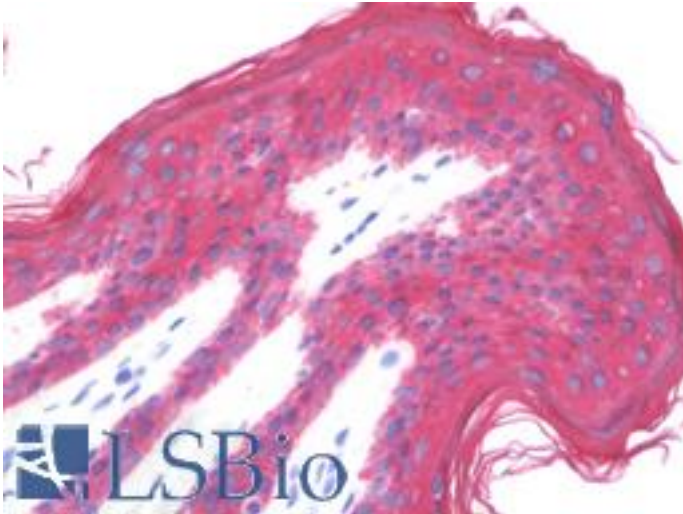


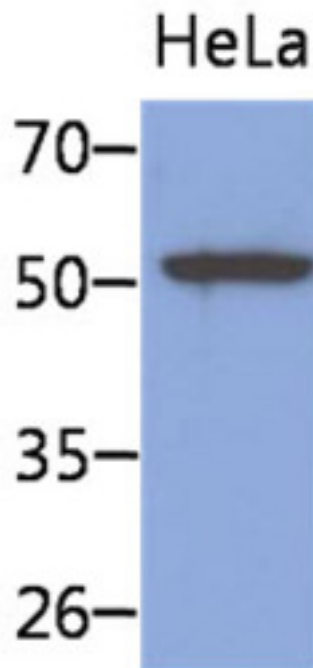
KRT8 / CK8 / Cytokeratin 8 Mouse anti-Human Monoclonal (AT3D11) Antibody - LS-B9664 - LSBio	
<b>CatalogID:</b>	LS-B9664
<b>Validation:</b>	This antibody replaces catalog number LS-C200836. It has been validated for use in the following assays: IHC-P.
<b>Target:</b>	keratin 8 (KRT8)
<b>Synonyms:</b>	KRT8 Antibody, CARD2 Antibody, CK-8 Antibody, CYK8 Antibody, Cytokeratin-8 Antibody, CK8 Antibody, K2C8 Antibody, K8 Antibody, KO Antibody, Keratin-8 Antibody, Type-II keratin Kb8 Antibody, Cytokeratin 8 Antibody, Keratin 8 Antibody
<b>Family / Subfamily:</b>	Keratin / not assigned-Keratin
<b>Host</b>	KRT8 antibody was produced in Mouse
<b>Clonality:</b>	Monoclonal
<b>Isotype:</b>	IgG3,k
<b>Clone Name:</b>	AT3D11
<b>Immunogen Species:</b>	KRT8 / CK8 / Cytokeratin 8 antibody was raised against Human
<b>Antigen Type:</b>	Recombinant protein
<b>Immunogen:</b>	KRT8 / CK8 / Cytokeratin 8 antibody was raised against recombinant human KRT8 (1-483aa) purified from E. coli.
<b>Specificity:</b>	Human KRT8 / CK8 / Cytokeratin 8
<b>Reactivity:</b>	Human
<b>Purification:</b>	Protein A purified
<b>Presentation:</b>	Supplied in PBS, pH 7.4, 10% glycerol, 0.02% sodium azide
<b>Recommended Storage:</b>	Can be stored at 4°C. For long term storage, aliquot and store at -20°C. Avoid repeated freezing and thawing cycles.
<b>Uses:</b>	IHC - Paraffin (10 µg/ml), Western blot (1:1000), ELISA (Optimal dilution to be determined by the researcher)
<b>Size:</b>	50 µl
<b>Concentration:</b>	1 mg/ml

**Immunohistochemistry Image:**



Human Skin: Formalin-Fixed, Paraffin-Embedded (FFPE)

**Western Blot Image:**



Western Blot: The cell lysates of HeLa (40 ug) were resolved by SDS-PAGE, transferred to PVDF membrane and probed with anti-human KRT8 antibody (1:1000). Proteins were visualized using a goat anti-mouse secondary antibody conjugated to HRP and an ECL detection system.

Requested From:

Japan

Laboratory Reagent For In Vitro Research Use Only

Not for resale without prior written consent from LifeSpan BioSciences, Inc.

Created on 9/24/2014

© 2014 LifeSpan BioSciences