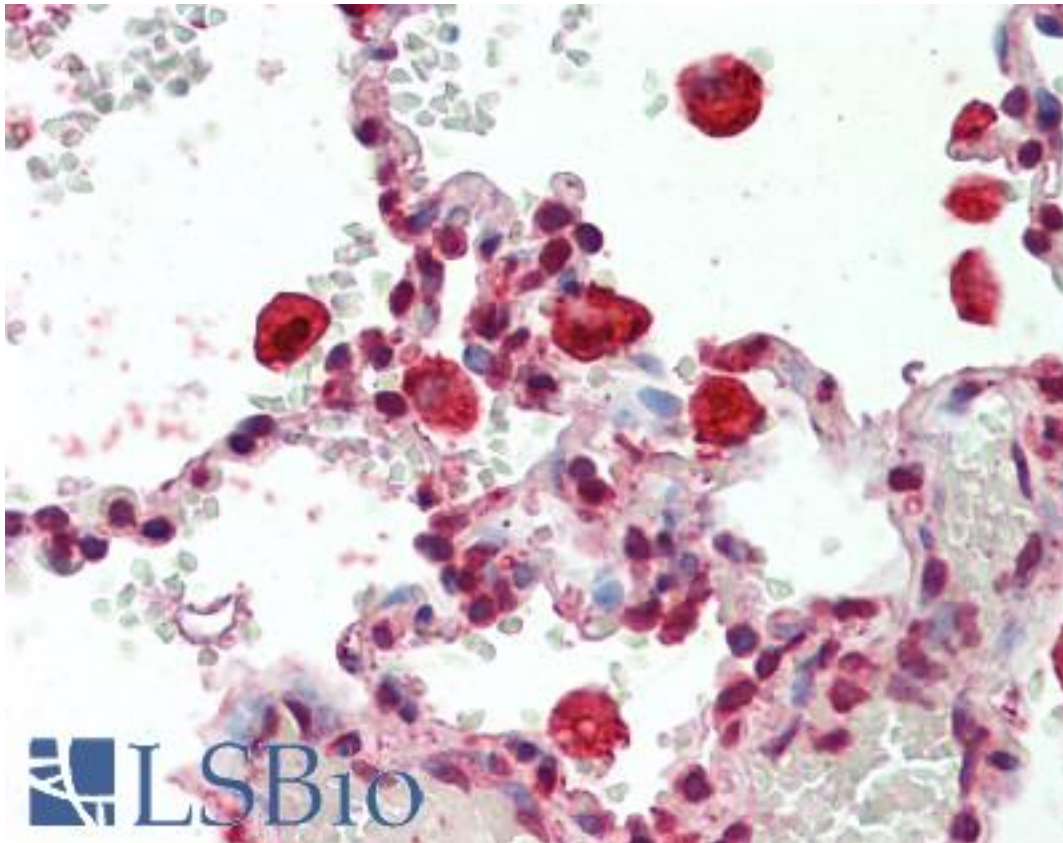


CAPG / MCP Rabbit anti-Human Polyclonal Antibody - LS-B9645 - LSBio

CatalogID:	LS-B9645
Validation:	This antibody replaces catalog number LS-C136869. It has been validated for use in the following assays: IHC-P.
Target:	capping protein (actin filament), gelsolin-like (CAPG)
Synonyms:	CAPG Antibody, AFCP Antibody, Actin-regulatory protein CAP-G Antibody, Actin regulatory protein CAP-G Antibody, Gelsolin-like capping protein Antibody, MCP Antibody, Macrophage capping protein Antibody, Macrophage-capping protein Antibody
Host	CAPG antibody was produced in Rabbit
Clonality:	Polyclonal
Isotype:	IgG
Immunogen Species:	CAPG / MCP antibody was raised against Human
Antigen Type:	Synthetic peptide - KLH conjugated
Immunogen:	CAPG / MCP antibody was raised against synthetic peptide conjugated to KLH
Specificity:	CAPG antibody detects endogenous levels of CAPG protein. Not tested with other proteins.
Reactivity:	Human, Mouse, Rat
Purification:	Purified
Presentation:	PBS, pH 7.4, 0.05% sodium azide
Recommended Storage:	Store at -20°C for up to one year.
Uses:	IHC - Paraffin (2.5 µg/ml), Western blot (1:250), ELISA (1:10000) (Optimal dilution to be determined by the researcher)
Size:	50 µl
Concentration:	1 mg/ml

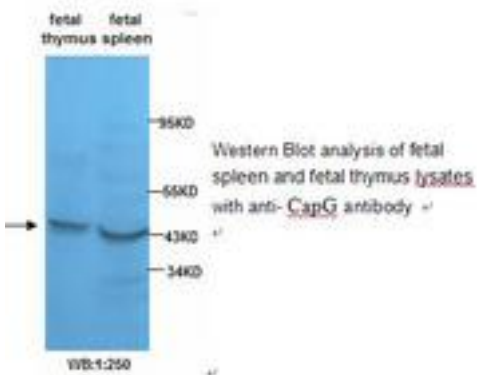
Immunohistochemistry Image:



Human Lung, Macrophages: Formalin-Fixed, Paraffin-Embedded (FFPE)

Western Blot Image:

This antibody identifies a band of approximately 43KD in fetal spleen and fetal thymus lysates.



Requested From:

Japan

Laboratory Reagent For In Vitro Research Use Only

Not for resale without prior written consent from LifeSpan BioSciences, Inc.

Created on 9/24/2014

© 2014 LifeSpan BioSciences