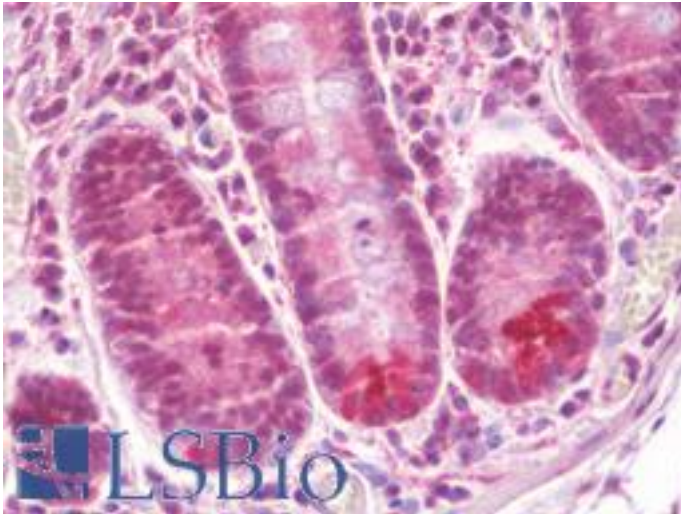


FCHSD1 Chicken anti-Human Polyclonal (C-Terminus) Antibody - LS-B9644 - LSBio

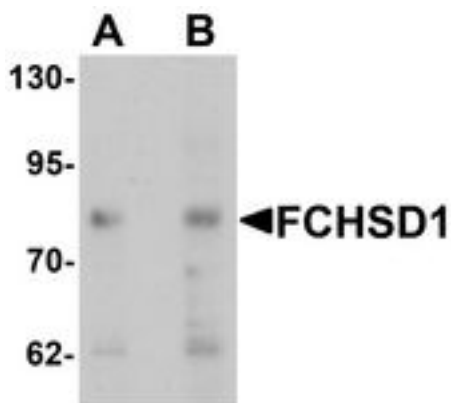
CatalogID:	LS-B9644
Validation:	This antibody replaces catalog number LS-C144429. It has been validated for use in the following assays: IHC-P.
Target:	FCH And Double SH3 Domains 1 (FCHSD1)
Synonyms:	FCHSD1 Antibody, FCH and double SH3 domains 1 Antibody, NWK2 Antibody, Nervous wreck homolog 2 Antibody
Host	FCHSD1 antibody was produced in Chicken
Clonality:	Polyclonal
Isotype:	IgY
Immunogen Species:	FCHSD1 antibody was raised against Human
Antigen Type:	Synthetic peptide
Immunogen:	FCHSD1 antibody was raised against a 15 amino acid peptide near the carboxy terminus of human FCHSD1
Specificity:	Human FCHSD1. Multiple isoforms of FCHSD1 are known to exist. FCHSD1 antibody is predicted to not cross-react with FCHSD2
Epitope:	C-Terminus
Reactivity:	Human, Mouse
Purification:	Immunoaffinity purified
Presentation:	PBS, 0.02% sodium azide
Recommended Storage:	Short term 4°C, long term aliquot and store at -20°C, avoid freeze thaw cycles. Store undiluted.
Uses:	IHC - Paraffin (5 µg/ml), Western blot (0.5 - 1 µg/ml), ELISA (Optimal dilution to be determined by the researcher)
Size:	50 µg
Concentration:	1 mg/ml

Immunohistochemistry Image:



Human Small Intestine: Formalin-Fixed, Paraffin-Embedded (FFPE)

Western Blot Image:



Western blot analysis of FCHSD1 in MCF7 cell lysate with FCHSD1 antibody at (A) 0.5 and (B) 1 ug/ml.

Requested From:

Japan

Laboratory Reagent For In Vitro Research Use Only

Not for resale without prior written consent from LifeSpan BioSciences, Inc.

Created on 9/24/2014

© 2014 LifeSpan BioSciences