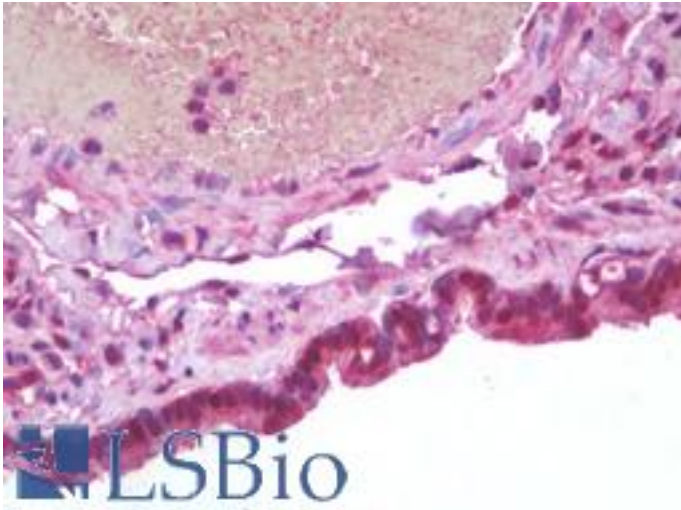


SAMHD1 Mouse anti-Human Monoclonal (3F5) Antibody - LS-B9640 - LSBio

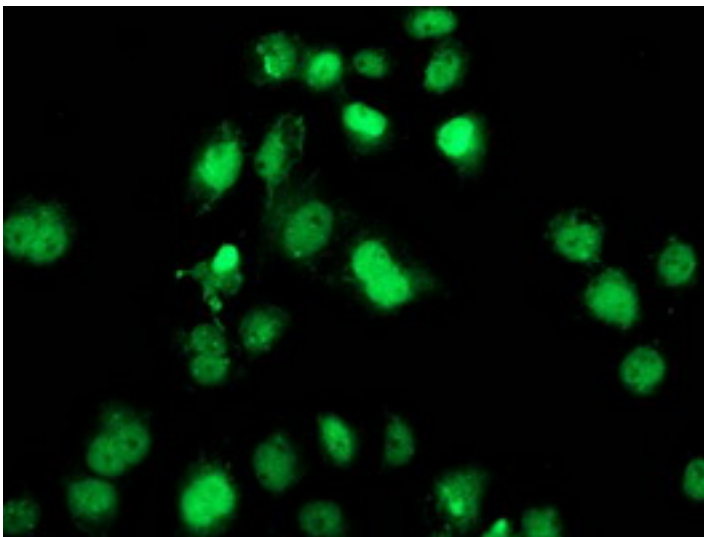
CatalogID:	LS-B9640
Validation:	This antibody replaces catalog number LS-C172454. It has been validated for use in the following assays: IHC-P.
Target:	SAM domain and HD domain 1 (SAMHD1)
Synonyms:	SAMHD1 Antibody, AGS5 Antibody, CHBL2 Antibody, DCIP Antibody, HDDC1 Antibody, Monocyte protein 5 Antibody, MOP-5 Antibody, MOP5 Antibody, SBBI88 Antibody, Mg11 Antibody, SAM domain and HD domain 1 Antibody
Host	SAMHD1 antibody was produced in Mouse
Clonality:	Monoclonal
Isotype:	IgG2b
Clone Name:	3F5
Immunogen Species:	SAMHD1 antibody was raised against Human
Antigen Type:	Recombinant protein
Immunogen:	SAMHD1 antibody was raised against full length human recombinant protein of human SAMHD1(NP_056289) produced in HEK293T cell.
Specificity:	Human SAMHD1 / DCIP
Reactivity:	Human, Monkey, Mouse, Rat, Dog
Purification:	Protein A/G purified
Presentation:	PBS, pH 7.3, 1% BSA, 50% glycerol, 0.02% sodium azide
Recommended Storage:	Store at -20°C. Minimize freezing and thawing.
Uses:	IHC - Paraffin (5 µg/ml), Immunofluorescence (1:100), Western blot (1:200 - 1:500), Flow Cytometry (1:100) (Optimal dilution to be determined by the researcher)
Size:	50 µl
Concentration:	1 mg/ml

Immunohistochemistry Image:



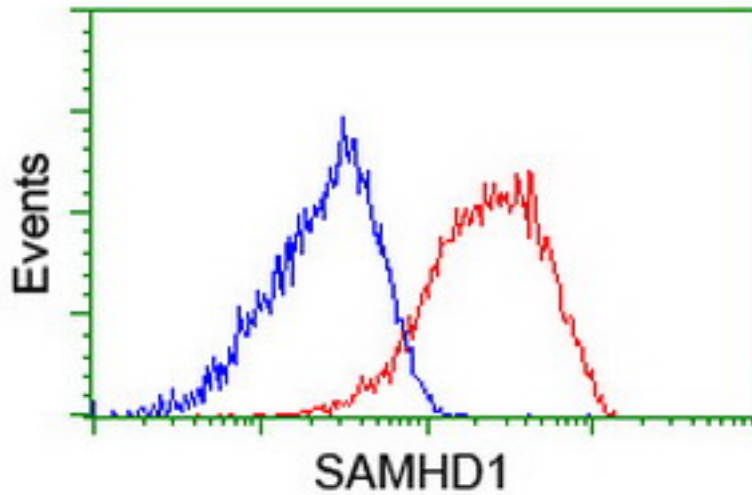
Human Lung: Formalin-Fixed, Paraffin-Embedded (FFPE)

Immunofluorescence Image:



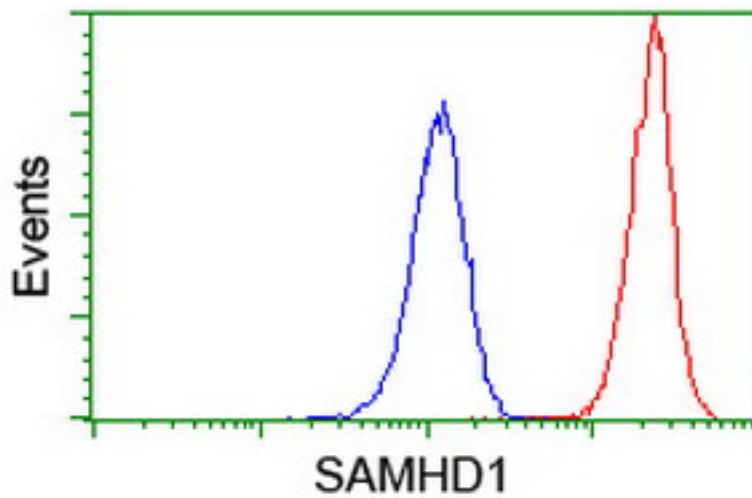
Anti-SAMHD1 mouse monoclonal antibody immunofluorescent staining of COS7 cells transiently transfected by pCMV6-ENTRY SAMHD1.

Flow Cytometry Image:



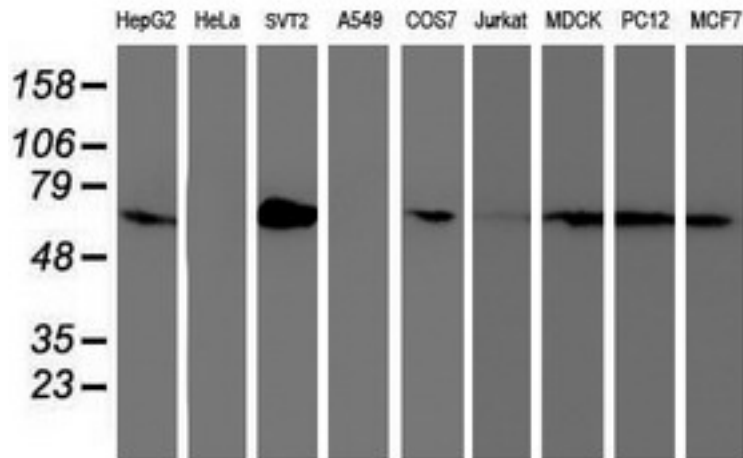
Flow cytometry of HeLa cells, using anti-SAMHD1 antibody (Red), compared to a nonspecific negative control antibody (Blue).

Flow Cytometry Image:



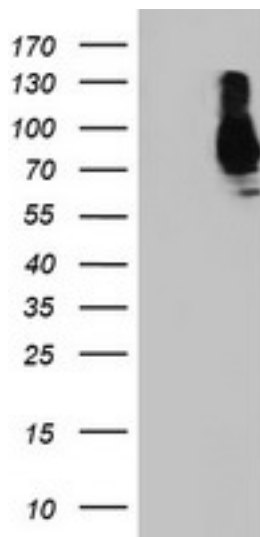
Flow cytometry of Jurkat cells, using anti-SAMHD1 antibody (Red), compared to a nonspecific negative control antibody (Blue).

Western Blot Image:



Western blot of extracts (35 ug) from 9 different cell lines by using anti-SAMHD1 monoclonal antibody.

Western Blot Image:



HEK293T cells were transfected with the pCMV6-ENTRY control (Left lane) or pCMV6-ENTRY SAMHD1 (Right lane) cDNA for 48 hrs and lysed. Equivalent amounts of cell lysates (5 ug per lane) were separated by SDS-PAGE and immunoblotted with anti-SAMHD1.

Requested From:

Japan

Laboratory Reagent For In Vitro Research Use Only

Not for resale without prior written consent from LifeSpan BioSciences, Inc.

Created on 9/24/2014

© 2014 LifeSpan BioSciences