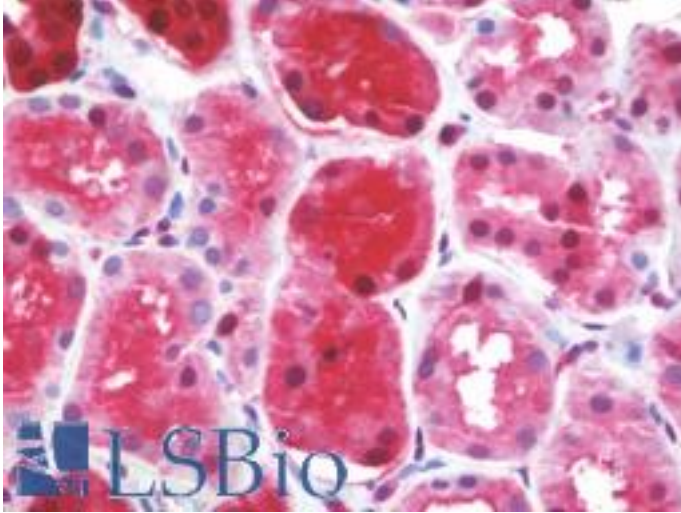


GSTP1 / GST Pi Rabbit anti-Rat Polyclonal Antibody - LS-B9638 - LSBio	
<b>CatalogID:</b>	LS-B9638
<b>Validation:</b>	This antibody replaces catalog number LS-C179188. It has been validated for use in the following assays: IHC-P.
<b>Target:</b>	glutathione S-transferase pi 1 (GSTP1)
<b>Synonyms:</b>	GSTP1 Antibody, Deafness, X-linked 7 Antibody, DFN7 Antibody, GSTP1-1 Antibody, Glutathione S-transferase P Antibody, GST Pi Antibody, GSTP Antibody, FAEES3 Antibody, Glutathione S-transferase pi 1 Antibody, GST class-pi Antibody, GST3 Antibody, PI Antibody
<b>Host</b>	GSTP1 antibody was produced in Rabbit
<b>Clonality:</b>	Polyclonal
<b>Isotype:</b>	IgG
<b>Immunogen Species:</b>	GSTP1 / GST Pi antibody was raised against Rat
<b>Antigen Type:</b>	Purified protein
<b>Immunogen:</b>	GSTP1 / GST Pi antibody was raised against purified rat liver glutathione S-transferase P.
<b>Specificity:</b>	Rat GSTP1 / GST Pi
<b>Reactivity:</b>	Rat, Human, Mouse
<b>Purification:</b>	Protein A purified
<b>Presentation:</b>	PBS, pH 7.2, 50% glycerol
<b>Recommended Storage:</b>	Store at -20°C.
<b>Uses:</b>	IHC - Paraffin (1:100), IHC - Frozen (1:1000 - 1:2000), Western blot (1:1000 - 1:2000) (Optimal dilution to be determined by the researcher)
<b>Size:</b>	50 µl

**Immunohistochemistry Image:**



Human Kidney: Formalin-Fixed, Paraffin-Embedded (FFPE)

**Requested From:**

Japan

Laboratory Reagent For In Vitro Research Use Only

Not for resale without prior written consent from LifeSpan BioSciences, Inc.

Created on 9/24/2014

© 2014 LifeSpan BioSciences