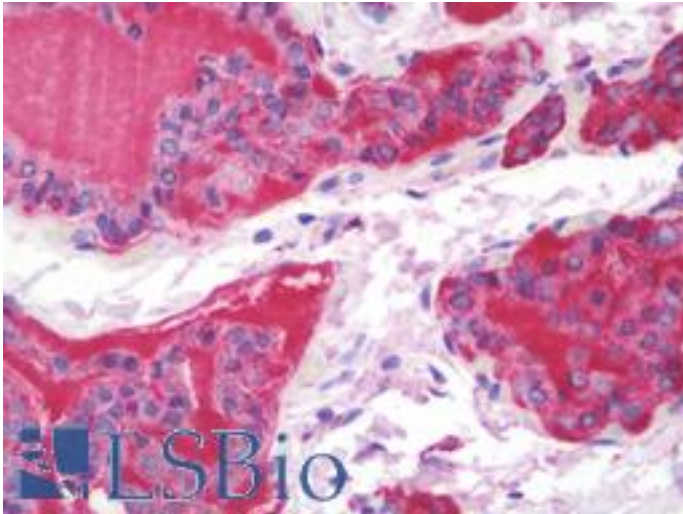


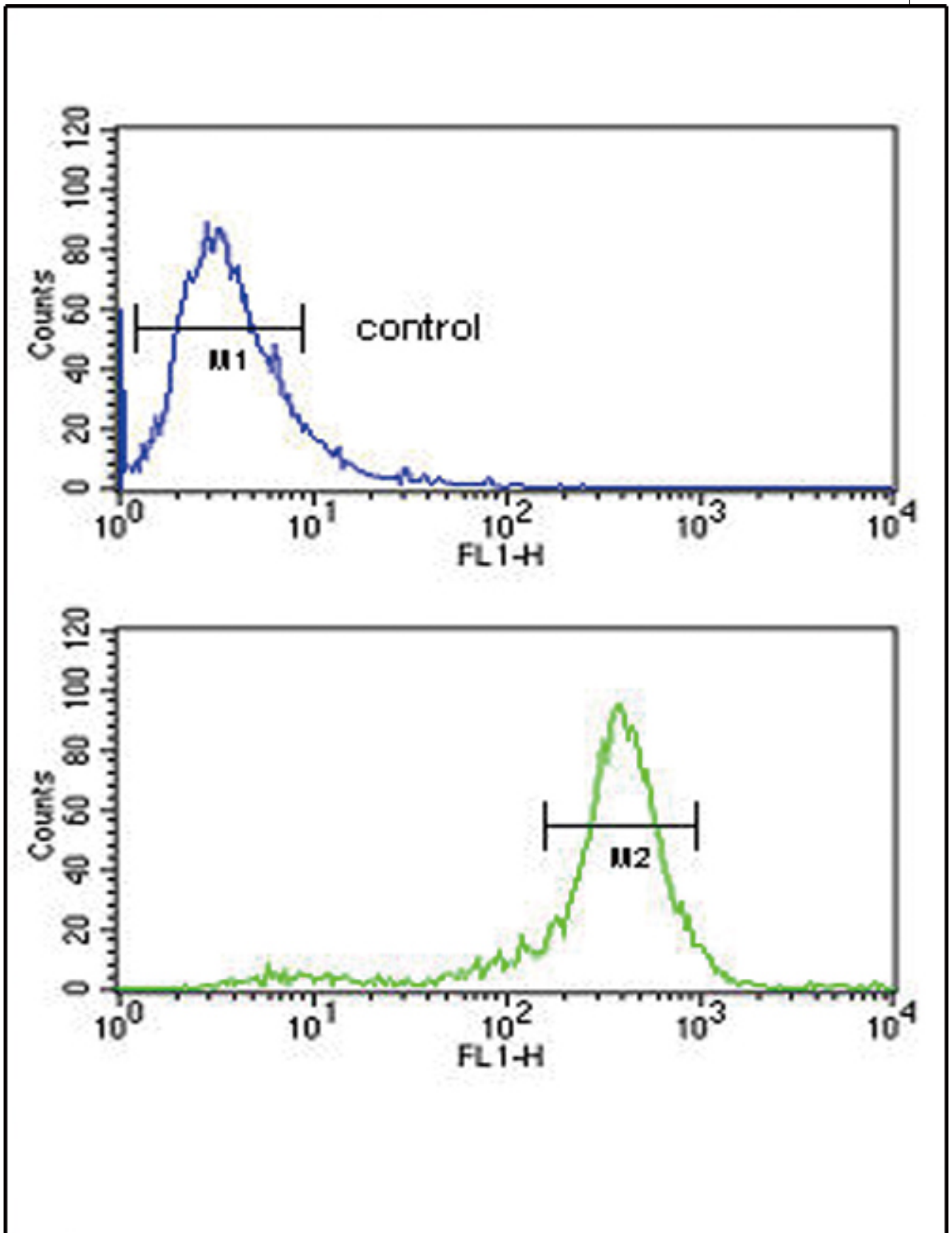
CALR / Calreticulin Rabbit anti-Human Polyclonal Antibody - LS-B9630 - LSBio	
CatalogID:	LS-B9630
Validation:	This antibody replaces catalog number LS-C168281. It has been validated for use in the following assays: IHC-P.
Target:	calreticulin
Synonyms:	CALR Antibody, Calregulin Antibody, CC1qR Antibody, CRP55 Antibody, CRT Antibody, CRTc Antibody, ERp60 Antibody, Grp60 Antibody, RO Antibody, SSA Antibody, Calreticulin Antibody, HACBP Antibody
Host	CALR antibody was produced in Rabbit
Clonality:	Polyclonal
Immunogen Species:	CALR / Calreticulin antibody was raised against Human
Antigen Type:	Recombinant protein
Immunogen:	CALR / Calreticulin antibody was raised against recombinant protein of human CALR.
Specificity:	Human Calreticulin
Reactivity:	Human, Mouse
Purification:	Immunoaffinity purified
Presentation:	PBS, 0.09% sodium azide
Recommended Storage:	Maintain refrigerated at 2-8°C for up to 6 months. For long term storage store at -20°C.
Uses:	IHC - Paraffin (1:100), Western blot (1:1000), Flow Cytometry (1:10 - 1:50) (Optimal dilution to be determined by the researcher)
Size:	200 µl

Immunohistochemistry Image:



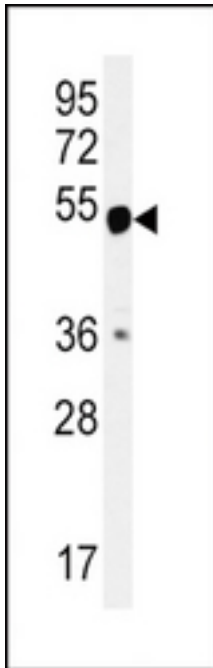
Human Thyroid: Formalin-Fixed, Paraffin-Embedded (FFPE)

Flow Cytometry Image:



CALR Antibody flow cytometry of HepG2 cells (bottom histogram) compared to a negative control cell (top histogram).FITC-conjugated goat-anti-rabbit secondary antibodies were used for the analysis.

Western Blot Image:



CALR Antibody Western blot of mouse bladder tissue lysates (15 ug/lane). This demonstrates the CALR antibody detected CALR protein (arrow).

Requested From:

Japan

Laboratory Reagent For In Vitro Research Use Only

Not for resale without prior written consent from LifeSpan BioSciences, Inc.

Created on 9/24/2014

© 2014 LifeSpan BioSciences