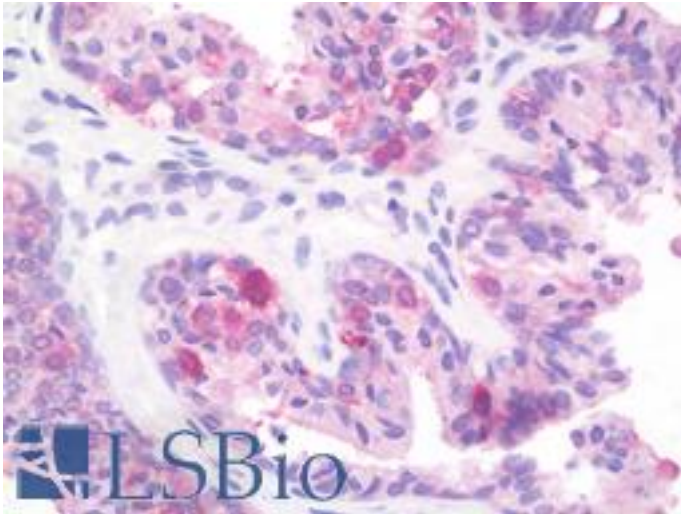


PTPRD / RPTP-Delta Rabbit anti-Human Polyclonal (aa343-371) Antibody - LS-B9625 - LSBio

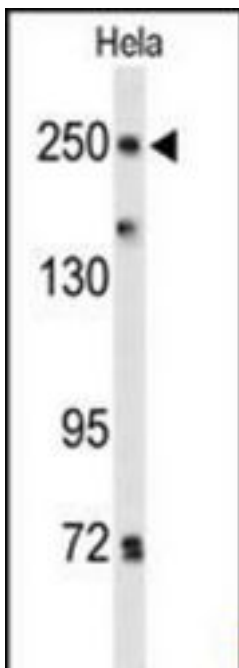
CatalogID:	LS-B9625
Validation:	This antibody replaces catalog number LS-C162312. It has been validated for use in the following assays: IHC-P.
Target:	protein tyrosine phosphatase, receptor type, D (PTPRD)
Synonyms:	PTPRD Antibody, Ctp1 Antibody, HPTP Antibody, HPTPDELTA Antibody, PTPD Antibody, R-PTP-delta Antibody, PTP delta Antibody, Ptpdelta Antibody, Bptp-2 Antibody, HPTPD Antibody, RPTPDELTA Antibody
Family / Subfamily:	Protein Phosphatase / R2B/LAR
Host	PTPRD antibody was produced in Rabbit
Clonality:	Polyclonal
Immunogen Species:	PTPRD / RPTP-Delta antibody was raised against Human
Antigen Type:	Synthetic peptide
Immunogen:	PTPRD / RPTP-Delta antibody was raised against kLH-conjugated synthetic peptide from N-terminal region of human PTPRD.
Specificity:	Human PTPRD
Epitope:	aa343-371
Reactivity:	Human
Purification:	Immunoaffinity purified
Presentation:	PBS, 0.09% sodium azide
Recommended Storage:	Maintain refrigerated at 2-8°C for up to 6 months. For long term storage store at -20°C.
Uses:	IHC - Paraffin (1:100), Western blot (1:1000) (Optimal dilution to be determined by the researcher)
Size:	200 µl

Immunohistochemistry Image:



Human Prostate: Formalin-Fixed, Paraffin-Embedded (FFPE)

Western Blot Image:



Western blot of PTPRD Antibody (N-term) in HeLa cell line lysates (35 ug/lane). PTPRD (arrow) was detected using the purified Pab.

Requested From:

Japan

Laboratory Reagent For In Vitro Research Use Only

Not for resale without prior written consent from LifeSpan BioSciences, Inc.

Created on 9/24/2014

© 2014 LifeSpan BioSciences