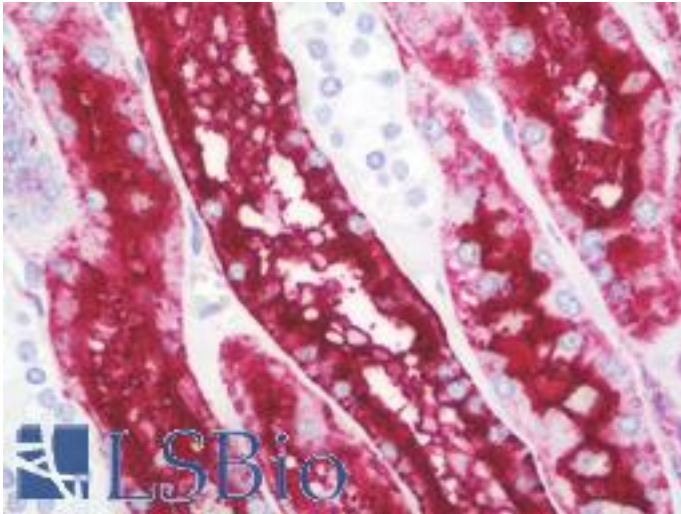


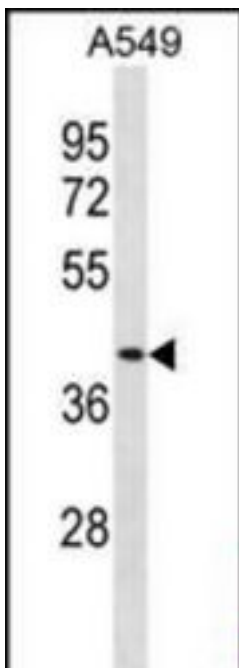
Renal Dipeptidase / DPEP1 Rabbit anti-Human Polyclonal (aa1-30) Antibody - LS-B9622 - LSBio	
CatalogID:	LS-B9622
Validation:	This antibody replaces catalog number LS-C157692. It has been validated for use in the following assays: IHC-P.
Target:	dipeptidase 1 (renal) (DPEP1)
Synonyms:	DPEP1 Antibody, Dipeptidase 1 (renal) Antibody, Dehydropeptidase-I Antibody, Dipeptidase 1 Antibody, HRDP Antibody, Microsomal dipeptidase Antibody, Renal dipeptidase Antibody, RDP Antibody
Family / Subfamily:	Exopeptidase / Metallopeptidase M19
Host	DPEP1 antibody was produced in Rabbit
Clonality:	Polyclonal
Immunogen Species:	Renal Dipeptidase / DPEP1 antibody was raised against Human
Antigen Type:	Synthetic peptide
Immunogen:	Renal Dipeptidase / DPEP1 antibody was raised against kLH-conjugated synthetic peptide from N-terminal region of human DPEP1.
Specificity:	Human Renal Dipeptidase / DPEP1
Epitope:	aa1-30
Reactivity:	Human
Purification:	Immunoaffinity purified
Presentation:	PBS, 0.09% sodium azide
Recommended Storage:	Maintain refrigerated at 2-8°C for up to 6 months. For long term storage store at -20°C.
Uses:	IHC - Paraffin (1:100), Western blot (1:1000) (Optimal dilution to be determined by the researcher)
Size:	200 µl

Immunohistochemistry Image:



Human Kidney: Formalin-Fixed, Paraffin-Embedded (FFPE)

Western Blot Image:



DPEP1 Antibody (N-term) Western blot of A549 cell line lysates (35 ug/lane). This demonstrates the DPEP1 antibody detected the DPEP1 protein (arrow).

Requested From:

Japan

Laboratory Reagent For In Vitro Research Use Only

Not for resale without prior written consent from LifeSpan BioSciences, Inc.

Created on 9/24/2014

© 2014 LifeSpan BioSciences